

À des fins de recherche uniquement

Anticorps Polyclonal de lapin anti-CEP250/CNAP1



Numéro de catalogue: 14498-1-AP

32 Publications

Informations de base

Numéro de catalogue:

14498-1-AP

Taille:

150ul, Concentration: 800 µg/ml by Nanodrop and 460 µg/ml by Bradford method using BSA as the standard;

Hôte:

Lapin

Isotype:

IgG

Immunogen Catalog Number:

AG5925

Numéro d'acquisition GenBank:

BC001433

Identification du gène (NCBI):

11190

Nom complet:

centrosomal protein 250kDa

MW calculé

281 kDa

MW observés:

250 kDa

Méthode de purification:

Purification par affinité contre l'antigène

Dilutions recommandées:

WB 1:500-1:1000

IP 0.5-4.0 ug for IP and 1:500-1:1000 for WB

IHC 1:50-1:500

IF 1:50-1:500

Applications

Applications testées:

IF, IHC, IP, WB, ELISA

Demandes citées:

IF, IHC, WB

Spécificité de l'espèce:

Humain

Espèces citées:

Humain, souris

Remarque-IHC: il est suggéré de démasquer l'antigène avec un tampon de TE buffer pH 9,0; (*) A défaut, 'le démasquage de l'antigène peut être effectué avec un tampon citrate pH 6,0.

Contrôles positifs:

WB : cellules HeLa,

IP : cellules HeLa,

IHC : tissu placentaire humain,

IF : cellules hTERT-RPE1, cellules HeLa

Informations générales

CEP250, also known as C-Nap1, is a 250 kDa coiled-coil protein that localizes to the proximal ends of mother and daughter centrioles. It is required for centriole-centriole cohesion during interphase of the cell cycle. It dissociates from the centrosomes when parental centrioles separate at the beginning of mitosis. The protein associates with and is phosphorylated by NIMA-related kinase 2, which is also associated with the centrosome.

Publications notables

Autrice	Pubmed ID	Journal	Application
Yuki Yoshino	32788231	J Cell Sci	IF
Robert Mahen	36282799	PLoS Biol	IF
Tianyu Wu	36395215	Science	IF

Stockage

Stockage:

Stocker à -20°C. Stable pendant un an après l'expédition.

Tampon de stockage:

PBS avec azoture de sodium à 0,02 % et glycérol à 50 % pH 7,3

L'aliquotage n'est pas nécessaire pour le stockage à -20C

*** Les 20ul contiennent 0,1% de BSA.

For technical support and original validation data for this product please contact:

T: 1 (888) 4PTGLAB (1-888-478-4522) (toll free in USA), or 1(312) 455-8498 (outside USA)

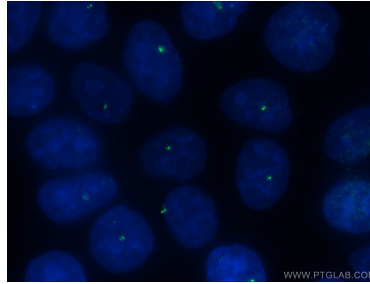
E: proteintech@ptglab.com
W: ptglab.com

This product is exclusively available under Proteintech Group brand and is not available to purchase from any other manufacturer.

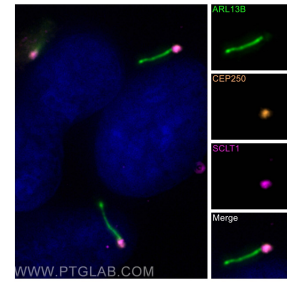
Données de validation sélectionnées



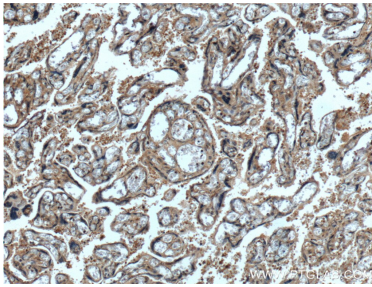
HeLa cells were subjected to SDS PAGE followed by western blot with 14498-1-AP (CEP250/CNAP1 antibody) at dilution of 1:500 incubated at room temperature for 1.5 hours.



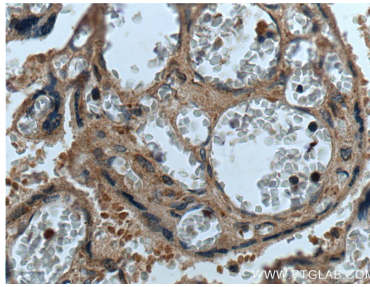
Immunofluorescent analysis of (-20°C Ethanol) fixed HeLa cells using 14498-1-AP (CEP250/CNAP1 antibody) at dilution of 1:50 and Alexa Fluor 488-conjugated AffiniPure Goat Anti-Rabbit IgG(H+L).



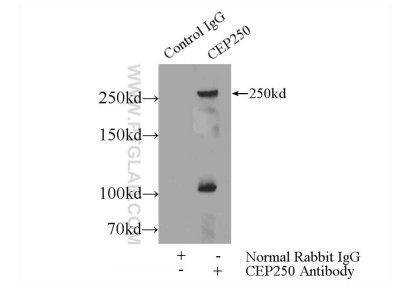
Immunofluorescent analysis of (-20°C Methanol) fixed hTERT-RPE1 cells using CEP250/CNAP1 antibody (14498-1-AP) at dilution of 1:100 and Cy3-conjugated Affinipure Goat Anti-Rabbit IgG(H+L), SCLT1 antibody (14875-1-AP, Magenta), CoraLite@488 ARL13B antibody (CL488-17711, green).



Immunohistochemical analysis of paraffin-embedded human placenta tissue slide using 14498-1-AP (CEP250/CNAP1 antibody) at dilution of 1:200 (under 10x lens).



Immunohistochemical analysis of paraffin-embedded human placenta tissue slide using 14498-1-AP (CEP250/CNAP1 antibody) at dilution of 1:200 (under 40x lens).



IP Result of anti-CEP250/CNAP1 (IP:14498-1-AP, 5ug; Detection:14498-1-AP 1:500) with HeLa cells lysate 1200ug.