

À des fins de recherche uniquement

Anticorps Polyclonal de lapin anti-NR1D1



Numéro de catalogue: 14506-1-AP

Phare

18 Publications

Informations de base

Numéro de catalogue: 14506-1-AP	Numéro d'acquisition GenBank: BC056148	Méthode de purification: Purification par affinité contre l'antigène
Taille: 150ul, Concentration: 550 µg/ml by Nanodrop;	Identification du gène (NCBI): 9572	Dilutions recommandées: WB 1:1000-1:4000 IP 0.5-4.0 ug for IP and 1:200-1:1000 for WB IF 1:50-1:500
Hôte: Lapin	Nom complet: nuclear receptor subfamily 1, group D, member 1	
Isotype: IgG	MW calculé: 67 kDa	
Immunogen Catalog Number: AG5964	MW observés: 55-68 kDa	

Applications

Applications testées:

IF, IP, WB, ELISA

Demandes citées:

ChIP, IF, IHC, WB

Spécificité de l'espèce:

Humain, souris

Espèces citées:

Humain, rat, souris

Contrôles positifs:

WB : cellules A549, cellules HeLa, cellules HepG2, cellules Jurkat, cellules NIH/3T3, cellules Y79

IP : cellules A549,

IF : cellules NIH/3T3,

Informations générales

NR1D1, also named as EAR1, THRAL, ear-1 and hRev, contains one nuclear receptor DNA-binding domain and belongs to the nuclear hormone receptor family, NR1 subfamily. This protein functions as a constitutive transcriptional repressor. It is a possible receptor for triiodothyronine. Rev-erba itself is activated by BMAL1-CLOCK and thereby represents the link between the positive and negative loops of the circadian clock. This is a rabbit polyclonal antibody raised against the N terminus of human NR1D1.

Publications notables

Autrice	Pubmed ID	Journal	Application
Xuekai Xiong	36093830	J Cell Sci	WB
Da-Yoon Jang	36048349	Neurochem Res	WB
Hao-Yu Liu	34722605	Front Nutr	ChIP

Stockage

Stockage:

Stocker à -20°C. Stable pendant un an après l'expédition.

Tampon de stockage:

PBS avec azoture de sodium à 0,02 % et glycérol à 50 % pH 7,3

L'aliqotage n'est pas nécessaire pour le stockage à -20C

*** Les 20ul contiennent 0,1% de BSA.

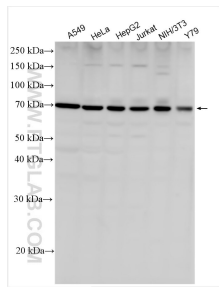
For technical support and original validation data for this product please contact:

T: 1 (888) 4PTGLAB (1-888-478-4522) (toll free in USA), or 1(312) 455-8498 (outside USA)

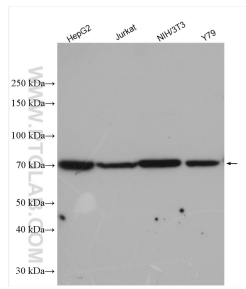
E: proteintech@ptglab.com
W: ptglab.com

This product is exclusively available under Proteintech Group brand and is not available to purchase from any other manufacturer.

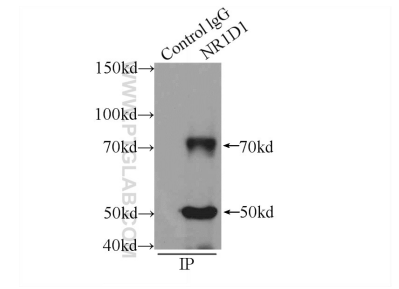
Données de validation sélectionnées



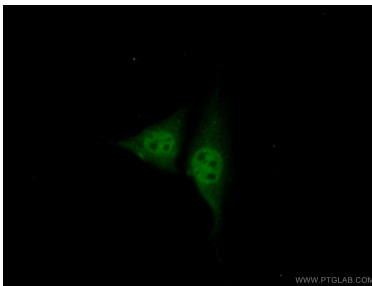
Various lysates were subjected to SDS PAGE followed by western blot with 14506-1-AP (NR1D1 antibody) at dilution of 1:2000 incubated at room temperature for 1.5 hours.



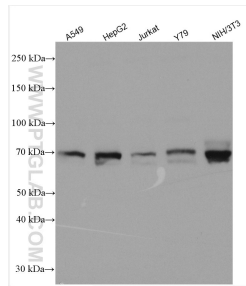
Various lysates were subjected to SDS PAGE followed by western blot with 14506-1-AP (NR1D1 antibody) at dilution of 1:3000 incubated at room temperature for 1.5 hours.



IP Result of anti-NR1D1 (IP:14506-1-AP, 4ug; Detection:14506-1-AP 1:300) with A549 cells lysate 1200ug.



Immunofluorescent analysis of (10% Formaldehyde) fixed NIH/3T3 cells using 14506-1-AP (NR1D1 antibody) at dilution of 1:50 and Alexa Fluor 488-conjugated AffiniPure Goat Anti-Rabbit IgG(H+L).



Various lysates were subjected to SDS PAGE followed by western blot with 14506-1-AP (NR1D1 antibody) at dilution of 1:2000 incubated at room temperature for 1.5 hours.