

À des fins de recherche uniquement

Anticorps Polyclonal de lapin anti-Synaptotagmin-1



Numéro de catalogue: 14511-1-AP

Phare

10 Publications

Informations de base

Numéro de catalogue:
14511-1-AP

Taille:
150ul, Concentration: 550 µg/ml by Nanodrop and 267 µg/ml by Bradford method using BSA as the standard;

Hôte:
Lapin

Isotype:
IgG

Immunogen Catalog Number:
AG5970

Numéro d'acquisition GenBank:
BC058917

Identification du gène (NCBI):
6857

Nom complet:
synaptotagmin I

MW calculé
48 kDa

MW observés:
65 kDa, 47 kDa

Méthode de purification:
Purification par affinité contre l'antigène

Dilutions recommandées:
WB 1:4000-1:20000
IP 0.5-4.0 ug for IP and 1:500-1:1000 for WB
IHC 1:20-1:200
IF 1:50-1:500

Applications

Applications testées:
IF, IHC, IP, WB, ELISA

Demandes citées:
IF, IHC, WB

Spécificité de l'espèce:
Humain, souris

Espèces citées:
Humain, rat, souris

Remarque-IHC: il est suggéré de démasquer l'antigène avec un tampon de TE buffer pH 9.0; (*) A défaut, le démasquage de l'antigène peut être effectué avec un tampon citrate pH 6,0.

Contrôles positifs:

WB : tissu de cervelet de souris, cellules HCT 116, cellules Y79, tissu hépatique humain, tissu testiculaire de souris

IP : tissu testiculaire de souris, cellules HCT 116

IHC : tissu de cancer du foie humain,

IF : cellules HepG2, cellules HCT 116

Informations générales

The synaptotagmins are integral membrane proteins of synaptic vesicles thought to serve as Ca(2+) sensors in the process of vesicular trafficking and exocytosis (PMID: 8058779). SYT1 (synaptotagmin I) was firstly identified as a 65-kDa protein with a wide distribution in neuronal and neurosecretory tissue (PMID: 7298720). Calcium binding to SYT1 participates in triggering neurotransmitter release at the synapse (PMID: 11242035). In addition to regulating exocytosis, SYT1 has also been implicated in endocytosis and neurite outgrowth (PMID: 15492212; 11078930; 10336114). This antibody recognizes endogenous SYT1, which has an experimentally determined molecular mass of 65-68 kDa. An additional band of 47 kDa could also be detected, which is corresponding to the calculated molecular weight of SYT1.

Publications notables

Autrice	Pubmed ID	Journal	Application
Jingyun Liu	36558932	Pharmaceuticals (Basel)	IHC,IF
Hao-Long Zeng	29174846	Biochim Biophys Acta	WB
Hao-Long Zeng	24998433	J Proteomics	WB

Stockage

Stockage:

Stocker à -20°C. Stable pendant un an après l'expédition.

Tampon de stockage:

PBS avec azoture de sodium à 0,02 % et glycérol à 50 % pH 7,3

L'aliquotage n'est pas nécessaire pour le stockage à -20C

*** Les 20ul contiennent 0,1% de BSA.

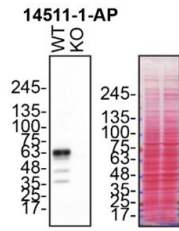
For technical support and original validation data for this product please contact:

T: 1 (888) 4PTGLAB (1-888-478-4522) (toll free in USA), or 1(312) 455-8498 (outside USA)

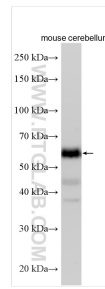
E: proteintech@ptglab.com
W: ptglab.com

This product is exclusively available under Proteintech Group brand and is not available to purchase from any other manufacturer.

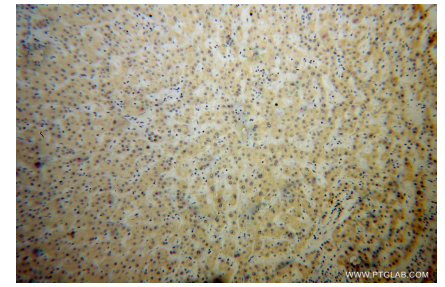
Données de validation sélectionnées



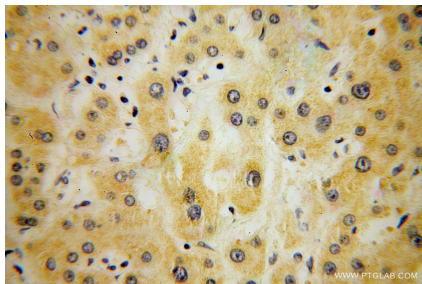
HCT 116 (WT and SYT1 KO) lysates prepared with RIPA buffer, 50 µg protein loaded. 14511-1-AP incubated at 1:500 at 4°C overnight in 5% BSA in TBST. Ponceau stained transfers shown on right. Data provided by YCharOS, an open science company with a mission to validate commercial antibodies to improve scientific reproducibility and transparency.



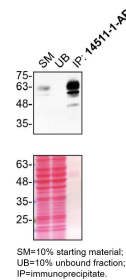
mouse cerebellum tissue was subjected to SDS PAGE followed by western blot with 14511-1-AP (Synaptotagmin-1 antibody) at dilution of 1:10000 incubated at room temperature for 1.5 hours.



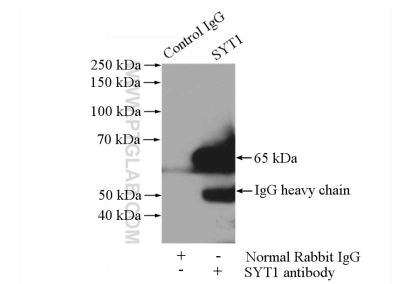
Immunohistochemical analysis of paraffin-embedded human liver cancer using 14511-1-AP (Synaptotagmin-1 antibody) at dilution of 1:100 (under 10x lens).



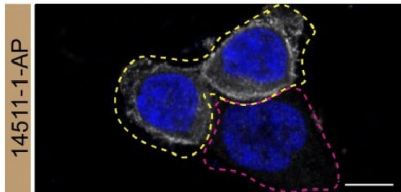
Immunohistochemical analysis of paraffin-embedded human liver cancer using 14511-1-AP (Synaptotagmin-1 antibody) at dilution of 1:100 (under 40x lens).



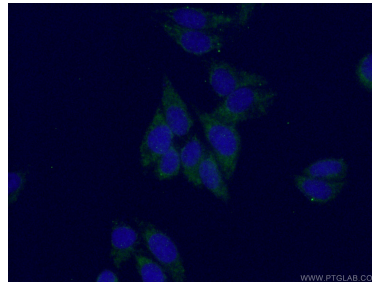
HCT 116 lysates prepared and IP of SYT1 performed using 1.0 µg of 14511-1-AP coupled to protein A-Sepharose beads. Data provided by YCharOS, an open science company with a mission to validate commercial antibodies to improve scientific reproducibility and transparency.



IP Result of anti-Synaptotagmin-1 (IP:14511-1-AP, 4µg; Detection:14511-1-AP 1:500) with mouse testis tissue lysate 4000µg.



HCT 116 WT cells (yellow outline) and SYT1 KO cells (red outline) labelled with a green or a far red fluorescence dye, respectively. Cells fixed with 4% PFA and stained with 14511-1-AP at 1:500 plus DAPI. Bars = 10 µm. Data provided by YCharOS, an open science company with a mission to validate commercial antibodies to improve scientific reproducibility and transparency.



Immunofluorescent analysis of (-20°C Ethanol) fixed HepG2 cells using 14511-1-AP (Synaptotagmin-1 antibody) at dilution of 1:50 and Alexa Fluor 488-conjugated AffiniPure Goat Anti-Rabbit IgG(H+L).