

À des fins de recherche uniquement

# Anticorps Polyclonal de lapin anti-CREB3L2



Numéro de catalogue: 14514-1-AP

5 Publications

## Informations de base

Numéro de catalogue:  
14514-1-AP

Taille:  
150ul, Concentration: 600 µg/ml by Nanodrop and 300 µg/ml by Bradford method using BSA as the standard;

Hôte:  
Lapin

Isotype:  
IgG

Immunogen Catalog Number:  
AG5973

Numéro d'acquisition GenBank:  
BC063666

Identification du gène (NCBI):  
64764

Nom complet:  
cAMP responsive element binding protein 3-like 2

MW calculé:  
57 kDa

MW observés:  
60-70 kDa

Méthode de purification:  
Purification par affinité contre l'antigène

Dilutions recommandées:  
WB 1:500-1:1000  
IF 1:20-1:200

## Applications

Applications testées:  
IF, WB, ELISA

Demandes citées:  
IF, WB

Spécificité de l'espèce:  
Humain, rat, souris

Espèces citées:  
Humain

Contrôles positifs:

WB : cellules HepG2, tissu hépatique de souris, tissu testiculaire de souris

IF : cellules HepG2,

## Informations générales

Cyclic AMP-responsive element-binding protein 3-like protein 2 (CREB3L2), also named BBF2H7, is a transcriptional activator which is activated during endoplasmic reticulum (ER) stress late phase. It has 3 isoforms produced by alternative splicing. CREB3L2 exerts protective effect in neurons by regulation of unfolded protein response (UPR)-dependent gene transcriptions. N-terminal cytoplasmic domain of CREB3L2 is cleaved under ER stress and then translocates to the nucleus. Catalog#14514-1-AP is a rabbit polyclonal antibody raised against N-terminal (1-247aa) of human CREB3L2.

## Publications notables

Autrice	Pubmed ID	Journal	Application
Ryoichi Murase	36152228	Mol Biol Rep	WB
Yongli Zhang	34664264	Br J Pharmacol	WB
Kentaro Oh-Hashi	33803345	Int J Mol Sci	WB

## Stockage

Stockage:

Stocker à -20°C. Stable pendant un an après l'expédition.

Tampon de stockage:

PBS avec azoture de sodium à 0,02 % et glycérol à 50 % pH 7,3

L'aliquotage n'est pas nécessaire pour le stockage à -20C

\*\*\* Les 20ul contiennent 0,1% de BSA.

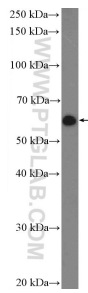
For technical support and original validation data for this product please contact:

T: 1 (888) 4PTGLAB (1-888-478-4522) (toll free in USA), or 1(312) 455-8498 (outside USA)

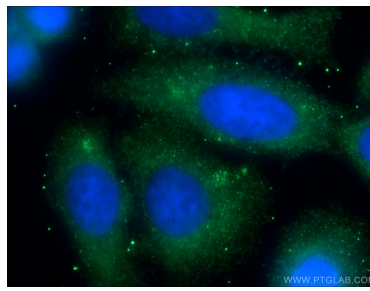
E: proteintech@ptglab.com  
W: ptglab.com

This product is exclusively available under Proteintech Group brand and is not available to purchase from any other manufacturer.

## Données de validation sélectionnées



HepG2 cells were subjected to SDS PAGE followed by western blot with 14514-1-AP (CREB3L2 Antibody) at dilution of 1:600 incubated at room temperature for 1.5 hours.



Immunofluorescent analysis of (-20°C Ethanol) fixed HepG2 cells using 14514-1-AP (CREB3L2 antibody) at dilution of 1:50 and Alexa Fluor 488-conjugated AffiniPure Goat Anti-Rabbit IgG(H+L).