

À des fins de recherche uniquement

Anticorps Polyclonal de lapin anti-TOM70



Numéro de catalogue: 14528-1-AP

Phare

59 Publications

Informations de base

Numéro de catalogue:
14528-1-AP

Taille:
150ul, Concentration: 550 µg/ml by Nanodrop and 280 µg/ml by Bradford method using BSA as the standard;

Hôte:
Lapin

Isotype:
IgG

Immunogen Catalog Number:
AG6027

Numéro d'acquisition GenBank:
BC052994

Identification du gène (NCBI):

9868
Nom complet:
translocase of outer mitochondrial membrane 70 homolog A (S. cerevisiae)

MW calculé
67 kDa

MW observés:
70 kDa

Méthode de purification:
Purification par affinité contre l'antigène

Dilutions recommandées:
WB 1:1000-1:6000
IP 0.5-4.0 µg for IP and 1:500-1:1000 for WB
IHC 1:20-1:200
IF 1:200-1:800

Applications

Applications testées:
FC, IF, IHC, IP, WB, ELISA

Demandes citées:
CoIP, IF, IP, WB

Spécificité de l'espèce:
Humain, rat, souris

Espèces citées:
Humain, rat, singe, souris

Remarque-IHC: il est suggéré de démasquer l'antigène avec un tampon de TE buffer pH 9,0; (*) A défaut, 'le démasquage de l'antigène peut être effectué avec un tampon citrate pH 6,0.

Contrôles positifs:

WB : cellules MCF-7, cellules HeLa, tissu cardiaque de rat, tissu cardiaque de souris, tissu cérébral de souris, tissu de muscle squelettique de rat, tissu hépatique de souris

IP : tissu cérébral de souris,

IHC : tissu cardiaque humain, tissu cardiaque de souris, tissu hépatique humain, tissu rénal humain

IF : cellules HepG2,

Informations générales

TOMM70A (or TOM70) is a mitochondrial import receptor responsible for the import of cytosol synthesized precursor proteins into the mitochondria. Tom70 is a member of the tetratricopeptide repeat (TPR) co-chaperone family and contains a conserved TPR clamp domain for interaction with Hsc70 and Hsp90. Recently overexpression of TOM70 has been linked to chemoresistance to drugs in breast cancer cell lines. It is also believed that Tom70 is significantly associated with breast cancer relapse and may predict the recurrence of ovarian cancer.

Publications notables

| Autrice | Pubmed ID | Journal | Application |
|-------------------|-----------|---------------------------|-------------|
| Shiyuan Huang | 32936696 | Am J Physiol Cell Physiol | WB |
| Asli D. Yildirim | 36100091 | J Lipid Res | WB |
| Milica Momcilovic | 31666695 | Nature | WB |

Stockage

Stockage:

Stocker à -20°C. Stable pendant un an après l'expédition.

Tampon de stockage:

PBS avec azoture de sodium à 0,02 % et glycérol à 50 % pH 7,3

L'aliquotage n'est pas nécessaire pour le stockage à -20C

*** Les 20ul contiennent 0,1% de BSA.

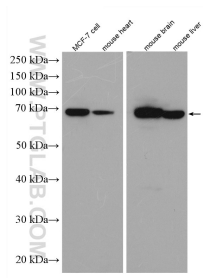
For technical support and original validation data for this product please contact:

T: 1 (888) 4PTGLAB (1-888-478-4522) (toll free in USA), or 1(312) 455-8498 (outside USA)

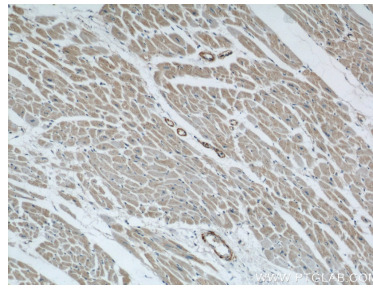
E: proteintech@ptglab.com
W: ptglab.com

This product is exclusively available under Proteintech Group brand and is not available to purchase from any other manufacturer.

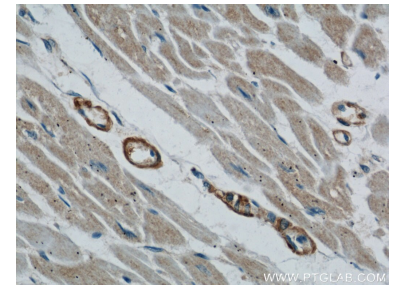
Données de validation sélectionnées



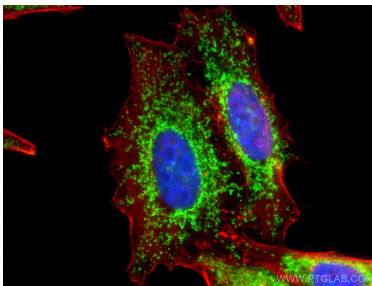
MCF-7 cells were subjected to SDS PAGE followed by western blot with 14528-1-AP (TOM70 antibody) at dilution of 1:3000 incubated at room temperature for 1.5 hours.



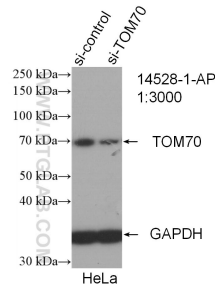
Immunohistochemical analysis of paraffin-embedded human heart using 14528-1-AP (TOM70 antibody) at dilution of 1:50 (under 10x lens).



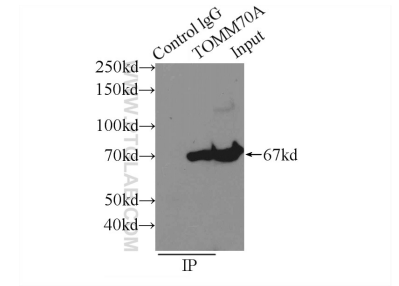
Immunohistochemical analysis of paraffin-embedded human heart using 14528-1-AP (TOM70 antibody) at dilution of 1:50 (under 40x lens).



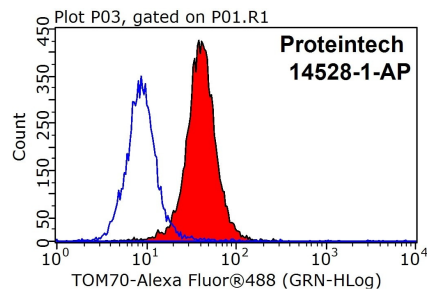
Immunofluorescent analysis of (4% PFA) fixed HepG2 cells using TOM70 antibody (14528-1-AP) at dilution of 1:400 and CoralLite@488-Conjugated AffiniPure Goat Anti-Rabbit IgG(H+L), CL594-Phalloidin (red).



WB result of TOM70 antibody (14528-1-AP; 1:3000; incubated at room temperature for 1.5 hours) with sh-Control and sh-TOM70 transfected HeLa cells.



IP Result of anti-TOM70 (IP:14528-1-AP, 3ug; Detection:14528-1-AP 1:500) with mouse brain tissue lysate 6000ug.



1X10⁶ HeLa cells were stained with .2ug TOM70 antibody (14528-1-AP, red) and control antibody (blue). Fixed with 90% MeOH blocked with 3% BSA (30 min). FITC-Goat anti-Rabbit IgG with dilution 1:100.