

À des fins de recherche uniquement

Anticorps Polyclonal de lapin anti-Hémoglobine Alpha



Numéro de catalogue: 14537-1-AP

Phare

10 Publications

Informations de base

Numéro de catalogue:
14537-1-AP

Taille:
150ul, Concentration: 400 µg/ml by
Nanodrop;

Hôte:
Lapin

Isotype:
IgG

Immunogen Catalog Number:
AG6040

Numéro d'acquisition GenBank:
BC050661

Identification du gène (NCBI):
3039

Nom complet:
hémoglobine, alpha 1

MW calculé

15 kDa

MW observés:
14-16 kDa, 27 kDa

Méthode de purification:
Purification par affinité contre
l'antigène

Dilutions recommandées:
WB 1:2000-1:20000
IP 0.5-4.0 µg for IP and 1:500-1:1000
for WB

Applications

Applications testées:
IP, WB, ELISA

Demandes citées:
IF, IHC, WB

Spécificité de l'espèce:
Humain, rat, souris

Espèces citées:
Humain, rat, souris

Contrôles positifs:

WB : tissu placentaire humain, tissu cardiaque de
souris, tissu hépatique de rat, tissu hépatique de souris

IP : tissu hépatique de souris,

Informations générales

The hemoglobin molecule is a tetramer consisting of two alpha- and two beta-globin-like chains. HBA1 (hemoglobin alpha chain) protein is a alpha-type chain of hemoglobin encoded by two independent genes (HBA1 and HBA2) whose coding sequences are identical. Two alpha chains coupled with two beta chains constitute the adult hemoglobin (HbA or $\alpha_2\beta_2$). HBA1 is also the component of fetal hemoglobin (HbF or $\alpha_2\gamma_2$). This antibody detects a major band around 14-16 kDa in the western blot analysis of heart tissue and K-562 cells. A higher band around 26-27 kDa can also be observed occasionally, which may represent the dimer form of HBA1 (PMID: 20836851). This antibody may cross-react with other hemoglobin chains.

Publications notables

Autrice	Pubmed ID	Journal	Application
Yujiao Lu	35628182	Int J Mol Sci	WB,IHC
Guanheng Yang	24816238	Haematologica	WB
Jing Chen	32763160	Stem Cell Reports	WB

Stockage

Stockage:
Stocker à -20°C. Stable pendant un an après l'expédition.

Tampon de stockage:
PBS avec azoture de sodium à 0,02 % et glycérol à 50 % pH 7,3
L'aliquotage n'est pas nécessaire pour le stockage à -20C

*** Les 20ul contiennent 0,1% de BSA.

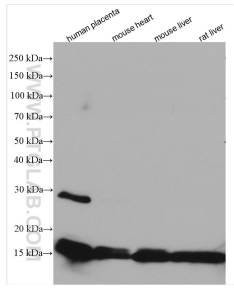
For technical support and original validation data for this product please contact:

T: 1 (888) 4PTGLAB (1-888-478-4522) (toll free
in USA), or 1(312) 455-8498 (outside USA)

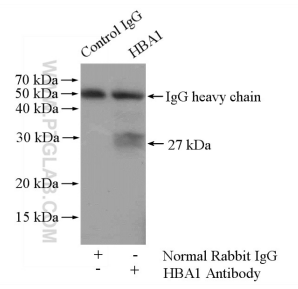
E: proteintech@ptglab.com
W: ptglab.com

This product is exclusively available under Proteintech Group brand and is not available to purchase from any other manufacturer.

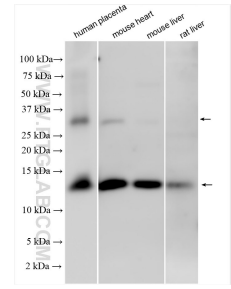
Données de validation sélectionnées



Various lysates were subjected to SDS PAGE followed by western blot with 14537-1-AP (Hemoglobin Alpha antibody) at dilution of 1:10000 incubated at room temperature for 1.5 hours.



IP Result of anti-Hemoglobin alpha (IP:14537-1-AP, 4ug; Detection:14537-1-AP 1:500) with mouse liver tissue lysate 4000ug.



Various lysates were subjected to SDS PAGE followed by western blot with 14537-1-AP (Hemoglobin Alpha antibody) at dilution of 1:20000 incubated at room temperature for 1.5 hours.