

À des fins de recherche uniquement

Anticorps Polyclonal de lapin anti-LZIC



Numéro de catalogue: 14543-1-AP

Informations de base

Numéro de catalogue: 14543-1-AP	Numéro d'acquisition GenBank: BC063443	Méthode de purification: Purification par affinité contre l'antigène
Taille: 150ul , Concentration: 1000 µg/ml by Nanodrop and 400 µg/ml by Bradford method using BSA as the standard;	Identification du gène (NCBI): 84328	Dilutions recommandées: WB 1:500-1:1000
Hôte: Lapin	Nom complet: leucine zipper and CTNNBIP1 domain containing	
Isotype: IgG	MW calculé: 21 kDa	
Immunogen Catalog Number: AG6047	MW observés: 21-24 kDa	

Applications

Applications testées: WB, ELISA	Contrôles positifs: WB : cellules BxPC-3, cellules HEK-293, cellules HepG2
Spécificité de l'espèce: Humain, rat, souris	

Informations générales

LZIC is closely related to ICAT, a physiological inhibitor of the Wnt pathway that interacts physically and functionally with β -catenin to prevent the transcription of Wnt target genes. LZIC's ICAT-homologous region is highly similar to ICAT with particular conservation of residues that are used by ICAT for β -catenin-binding. LZIC does not interact with β -catenin in vitro or in vivo. LZIC is a protein conserved in vertebrates, is required for neuronal survival.

Stockage

Stockage:
Stocker à -20°C. Stable pendant un an après l'expédition.
Tampon de stockage:
PBS avec azoture de sodium à 0,02 % et glycérol à 50 % pH 7,3
L'aliquotage n'est pas nécessaire pour le stockage à -20C

***** Les 20ul contiennent 0,1% de BSA.**

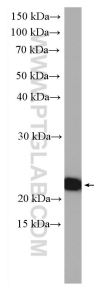
For technical support and original validation data for this product please contact:

T: 1 (888) 4PTGLAB (1-888-478-4522) (toll free in USA), or 1(312) 455-8498 (outside USA)

E: proteintech@ptglab.com
W: ptglab.com

This product is exclusively available under Proteintech Group brand and is not available to purchase from any other manufacturer.

Données de validation sélectionnées



BxPC-3 cells were subjected to SDS PAGE followed by western blot with 14543-1-AP (LZIC antibody) at dilution of 1:600 incubated at room temperature for 1.5 hours.