

À des fins de recherche uniquement

Anticorps Polyclonal de lapin anti-AFP



Numéro de catalogue: 14550-1-AP

90 Publications

Informations de base

Numéro de catalogue:

14550-1-AP

Taille:

150ul, Concentration: 650 µg/ml by Nanodrop;

Hôte:

Lapin

Isotype:

IgG

Immunogen Catalog Number:

AG6089

Numéro d'acquisition GenBank:

BC027881

Identification du gène (NCBI):

174

Nom complet:

alpha-fetoprotein

MW calculé

69 kDa

MW observés:

68-72 kDa

Méthode de purification:

Purification par affinité contre l'antigène

Dilutions recommandées:

WB 1:2000-1:10000

IP 0.5-4.0 ug for IP and 1:500-1:2000 for WB

IHC 1:20-1:200

IF 1:50-1:500

Applications

Applications testées:

IF, IHC, IP, WB, ELISA

Demandes citées:

CoIP, FC, IF, IHC, WB

Spécificité de l'espèce:

Humain

Espèces citées:

Humain, rat, souris

Contrôles positifs:

WB : cellules BxPC-3, cellules HuH-7, cellules LO2, tissu placentaire humain

IP : cellules HepG2,

IHC : tissu de cancer du foie humain, tissu de tumeur ovarienne humain

IF : cellules MCF-7,

Remarque-IHC: il est suggéré de démasquer l'antigène avec un tampon de TE buffer pH 9,0; (*) À défaut, le démasquage de l'antigène peut être effectué avec un tampon citrate pH 6,0.

Informations générales

AFP, also known as Alpha-fetoprotein, is a major plasma protein in the fetus and its concentration is very low in the adult (PubMed:24120489). AFP is considered a marker of hepatocyte precursors. AFP can be detected at abnormally high concentrations in hepatocellular carcinomas as well as in the plasma and ascitic fluid of adults with hepatoma. High AFP concentrations have been correlated with tumor cell growth, indicating that AFP can serve as a tumor marker (PubMed: 18669658).

Publications notables

Autrice	Pubmed ID	Journal	Application
Jian Sun	27714143	Nanoscale	
Shaling Li	36169092	Cancer Sci	IF
Masahiro Yamamoto	28964793	Am J Pathol	IHC

Stockage

Stockage:

Stocker à -20°C. Stable pendant un an après l'expédition.

Tampon de stockage:

PBS avec azoture de sodium à 0,02 % et glycérol à 50 % pH 7,3

L'aliquotage n'est pas nécessaire pour le stockage à -20C

*** Les 20ul contiennent 0,1% de BSA.

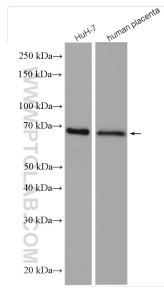
For technical support and original validation data for this product please contact:

T: 1 (888) 4PTGLAB (1-888-478-4522) (toll free in USA), or 1(312) 455-8498 (outside USA)

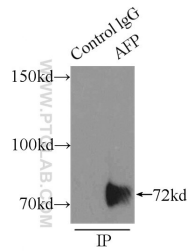
E: proteintech@ptglab.com
W: ptglab.com

This product is exclusively available under Proteintech Group brand and is not available to purchase from any other manufacturer.

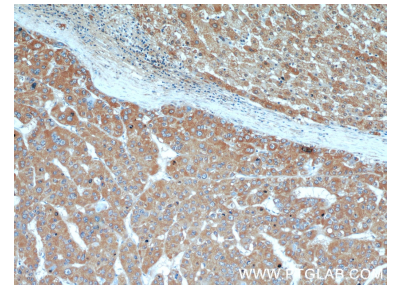
Données de validation sélectionnées



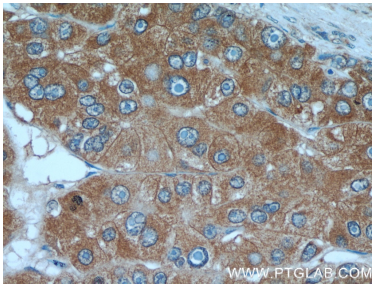
Various lysates were subjected to SDS PAGE followed by western blot with 14550-1-AP (AFP antibody) at dilution of 1:1500 incubated at room temperature for 1.5 hours.



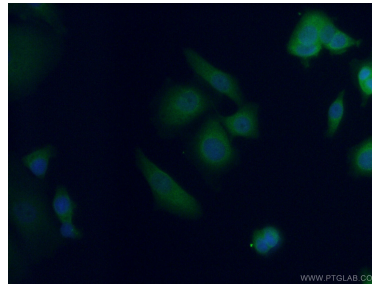
IP Result of anti-AFP (IP:14550-1-AP, 5ug; Detection:14550-1-AP 1:1000) with HepG2 cells lysate 6000ug.



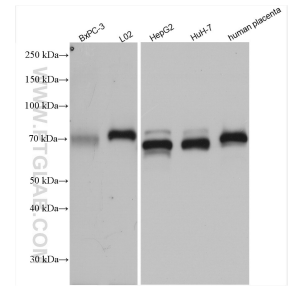
Immunohistochemical analysis of paraffin-embedded human liver cancer using 14550-1-AP (AFP antibody) at dilution of 1:50 (under 10x lens).



Immunohistochemical analysis of paraffin-embedded human liver cancer using 14550-1-AP (AFP antibody) at dilution of 1:50 (under 40x lens).



Immunofluorescent analysis of (4% PFA) fixed MCF-7 cells using 14550-1-AP (AFP antibody) at dilution of 1:50 and Alexa Fluor 488-Conjugated AffiniPure Goat Anti-Rabbit IgG(H+L).



BxPC-3 cells were subjected to SDS PAGE followed by western blot with 14550-1-AP (AFP antibody) at dilution of 1:5000 incubated at room temperature for 1.5 hours.