

À des fins de recherche uniquement

# Anticorps Polyclonal de lapin anti-NACC1



Numéro de catalogue: 14551-1-AP

2 Publications

## Informations de base

<b>Numéro de catalogue:</b> 14551-1-AP	<b>Numéro d'acquisition GenBank:</b> BC055396	<b>Méthode de purification:</b> Purification par affinité contre l'antigène
<b>Taille:</b> 150ul , Concentration: 1000 µg/ml by Nanodrop;	<b>Identification du gène (NCBI):</b> 112939	<b>Dilutions recommandées:</b> WB 1:1000-1:6000 IP 0.5-4.0 ug for IP and 1:200-1:1000 for WB IHC 1:50-1:500 IF 1:200-1:800
<b>Hôte:</b> Lapin	<b>Nom complet:</b> nucleus accumbens associated 1, BEN and BTB (POZ) domain containing	
<b>Isotype:</b> IgG	<b>MW calculé:</b> 57 kDa	
<b>Immunogen Catalog Number:</b> AG6096	<b>MW observés:</b> 60 kDa	

## Applications

<b>Applications testées:</b> IF, IHC, IP, WB, ELISA	<b>Contrôles positifs:</b> WB : cellules LNCaP, cellules MCF-7 IP : cellules MCF-7, IHC : tissu ovarien de souris, tissu de tumeur ovarienne humain IF : cellules MCF-7,
<b>Demandes citées:</b> WB	
<b>Spécificité de l'espèce:</b> Humain, souris	
<b>Espèces citées:</b> Humain	

**Remarque-IHC: il est suggéré de démasquer l'antigène avec un tampon de TE buffer pH 9,0; (\*) À défaut, 'le démasquage de l'antigène peut être 'effectué avec un tampon citrate pH 6,0.**

## Informations générales

NACC1, also named as BTBD14B and NAC1, belongs to the BTB/POZ family. NACC1 is a transcriptional repressor, which is amplified and overexpressed in various human cancers and plays critical roles in tumor development, progression, and drug resistance (PMID: 31101655). NACC1 has 1 isoform with the molecular mass of 57 kDa. While NACC1 has been shown to repress the transcription of two tumor suppressors, Gadd45-g and Gadd45-g- interacting protein 1, scientists have found that NACC1 also plays an important role in nontranscriptional function, for example, it can act as a bridge for MAVS and TBK1 in RLR-mediated signaling (PMID: 31235549).

## Publications notables

Autrice	Pubmed ID	Journal	Application
Hong-Fang Tao	33416160	Oncol Rep	WB
Bin Xu	37577235	J Clin Transl Hepatol	WB

## Stockage

**Stockage:**  
Stocker à -20°C. Stable pendant un an après l'expédition.  
**Tampon de stockage:**  
PBS avec azoture de sodium à 0,02 % et glycérol à 50 % pH 7,3  
L'aliquotage n'est pas nécessaire pour le stockage à -20C

\*\*\* Les 20ul contiennent 0,1% de BSA.

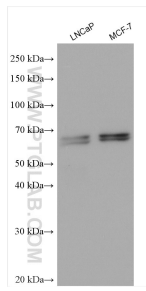
For technical support and original validation data for this product please contact:

T: 1 (888) 4PTGLAB (1-888-478-4522) (toll free in USA), or 1(312) 455-8498 (outside USA)

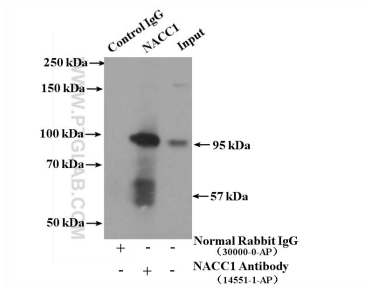
E: proteintech@ptglab.com  
W: ptglab.com

This product is exclusively available under Proteintech Group brand and is not available to purchase from any other manufacturer.

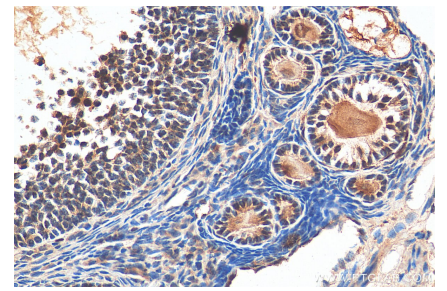
## Données de validation sélectionnées



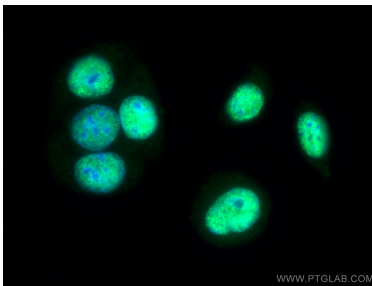
Various lysates were subjected to SDS PAGE followed by western blot with 14551-1-AP (NACC1 antibody) at dilution of 1:3000 incubated at room temperature for 1.5 hours.



IP Result of anti-NACC1 (IP:14551-1-AP, 4ug; Detection:14551-1-AP 1:300) with MCF-7 cells lysate 3200ug.



Immunohistochemical analysis of paraffin-embedded mouse ovary tissue slide using 14551-1-AP (NACC1 antibody) at dilution of 1:200 (under 40x lens). Heat mediated antigen retrieval with Tris-EDTA buffer (pH 9.0).



Immunofluorescent analysis of (-20°C Ethanol) fixed MCF-7 cells using NACC1 antibody (14551-1-AP) at dilution of 1:400 and CoraLite®488-Conjugated AffiniPure Goat Anti-Rabbit IgG(H+L).