

À des fins de recherche uniquement

Anticorps Polyclonal de lapin anti-CDR2L



Numéro de catalogue: 14563-1-AP

Phare

4 Publications

Informations de base

Numéro de catalogue:

14563-1-AP

Taille:

150ul, Concentration: 200 µg/ml by Bradford method using BSA as the standard;

Hôte:

Lapin

Isotype:

IgG

Immunogen Catalog Number:

AG6127

Numéro d'acquisition GenBank:

BC047534

Identification du gène (NCBI):

30850

Nom complet:

cerebellar degeneration-related protein 2-like

MW calculé

53 kDa

MW observés:

53 kDa

Méthode de purification:

Purification par affinité contre l'antigène

Dilutions recommandées:

IP 0.5-4.0 ug for IP and 1:500-1:1000 for WB

IHC 1:50-1:500

IF 1:20-1:200

Applications

Applications testées:

IF, IHC, IP, ELISA

Demandes citées:

IF, IHC, IP, WB

Spécificité de l'espèce:

Humain, rat, souris

Espèces citées:

Humain, rat

Remarque-IHC: il est suggéré de démasquer l'antigène avec un tampon de TE buffer pH 9,0; (*) A défaut, 'le démasquage de l'antigène peut être effectué avec un tampon citrate pH 6,0.

Contrôles positifs:

IP: cellules SH-SY5Y,

IHC: tissu de cervelet humain, tissu cérébral de souris

IF: cellules HepG2,

Informations générales

Cerebellar degeneration-related protein 2-like(CDR2L), also named as HUMPPA or Paraneoplastic 62 kDa antigen, is a 465 amino acid protein, which belongs to the CDR2 family. CDR2L contains three potential coiled-coil regions. The functions of protein is so far not known. CDR2L is expressed in the brain and localizes in the cytoplasm. The predicted MW of this protein is 53 kDa.

Publications notables

Autrice	Pubmed ID	Journal	Application
Ida Herdlevaer	33009713	Ann Clin Transl Neurol	WB,IF,IP
Margrethe Raspotnig	34823119	J Neuroimmunol	WB,IHC
Margrethe Raspotnig	28710511	Cancer Immunol Immunother	WB,IHC

Stockage

Stockage:

Stocker à -20°C. Stable pendant un an après l'expédition.

Tampon de stockage:

PBS avec azoture de sodium à 0,02 % et glycérol à 50 % pH 7,3

L'aliquotage n'est pas nécessaire pour le stockage à -20C

*** Les 20ul contiennent 0,1% de BSA.

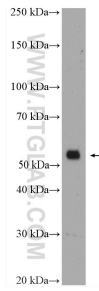
For technical support and original validation data for this product please contact:

T: 1 (888) 4PTGLAB (1-888-478-4522) (toll free in USA), or 1(312) 455-8498 (outside USA)

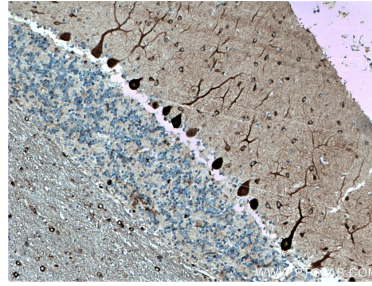
E: proteintech@ptglab.com
W: ptglab.com

This product is exclusively available under Proteintech Group brand and is not available to purchase from any other manufacturer.

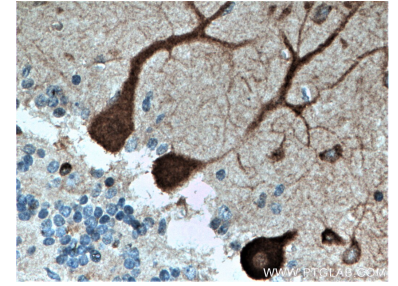
Données de validation sélectionnées



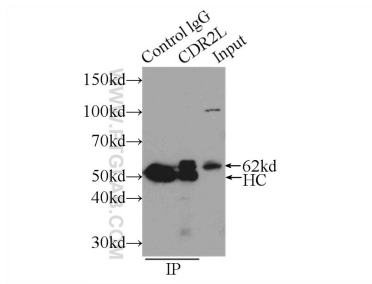
K-562 cells were subjected to SDS PAGE followed by western blot with 14563-1-AP (CDR2L antibody) at dilution of 1:600 incubated at room temperature for 1.5 hours.



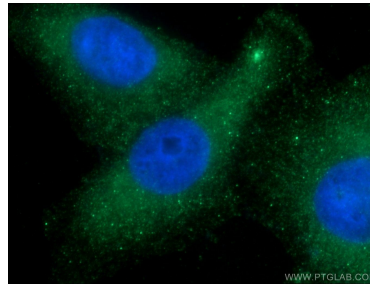
Immunohistochemical analysis of paraffin-embedded human cerebellum tissue slide using 14563-1-AP (CDR2L antibody) at dilution of 1:200 (under 10x lens. Heat mediated antigen retrieval with Tris-EDTA buffer (pH 9.0).



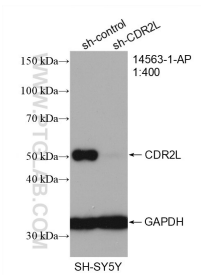
Immunohistochemical analysis of paraffin-embedded human cerebellum tissue slide using 14563-1-AP (CDR2L antibody) at dilution of 1:200 (under 40x lens. Heat mediated antigen retrieval with Tris-EDTA buffer (pH 9.0).



IP Result of anti-CDR2L (IP:14563-1-AP, 3ug; Detection:14563-1-AP 1:500) with SH-SY5Y cells lysate 2500ug.



Immunofluorescent analysis of HepG2 cells using 14563-1-AP (CDR2L antibody) at dilution of 1:50 and Alexa Fluor 488-conjugated AffiniPure Goat Anti-Rabbit IgG(H+L).



WB result of CDR2L antibody (14563-1-AP; 1:400; incubated at room temperature for 1.5 hours) with sh-Control and sh-CDR2L transfected SH-SY5Y cells.