

À des fins de recherche uniquement

Anticorps Polyclonal de lapin anti-Pikachurin



Numéro de catalogue: 14578-1-AP

1 Publications

Informations de base

Numéro de catalogue: 14578-1-AP	Numéro d'acquisition GenBank: BC033177	Méthode de purification: Purification par affinité contre l'antigène
Taille: 150ul , Concentration: 500 µg/ml by Nanodrop and 253 µg/ml by Bradford method using BSA as the standard;	Identification du gène (NCBI): 133584	Dilutions recommandées: WB 1:500-1:2000 IF 1:20-1:200
Hôte: Lapin	Nom complet: EGF-like, fibronectin type III and laminin G domains	
Isotype: IgG	MW calculé: 111 kDa	
Immunogen Catalog Number: AG5986	MW observés: 60 kDa	

Applications

Applications testées: IF, WB, ELISA	Contrôles positifs:
Demandes citées: IF	WB : tissu placentaire humain, cellules PC-3, cellules SH-SY5Y
Spécificité de l'espèce: Humain, rat, souris	IF : cellules SH-SY5Y,
Espèces citées: souris	

Informations générales

Pikachurin, also known as EGFLAM or FLJ39155, is an extracellular matrix-like retinal protein that has been found to localize in the synaptic cleft of the photoreceptor ribbon synapse (PMID: 18641643). Pikachurin is a dystroglycan-interacting protein and has an essential role in photoreceptor ribbon synapse formation. Pikachurin is a 1017-amino-acid protein with a calculated molecular weight of 111 kDa and high mRNA abundance in retina. This antibody detects a 60-kDa band, which has been reported and likely represents a fragment resulting from cleavage of Pikachurin (PMID: 23226524).

Publications notables

Autrice	Pubmed ID	Journal	Application
Chen Liang	32178579	Stem Cells Dev	IF

Stockage

Stockage:
Stocker à -20°C. Stable pendant un an après l'expédition.
Tampon de stockage:
PBS avec azoture de sodium à 0,02 % et glycérol à 50 % pH 7,3
L'aliquotage n'est pas nécessaire pour le stockage à -20C

*** Les 20ul contiennent 0,1% de BSA.

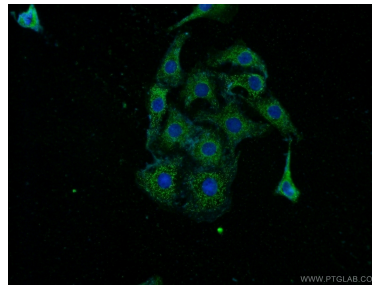
For technical support and original validation data for this product please contact:
T: 1 (888) 4PTGLAB (1-888-478-4522) (toll free in USA), or 1(312) 455-8498 (outside USA)
E: proteintech@ptglab.com
W: ptglab.com

This product is exclusively available under Proteintech Group brand and is not available to purchase from any other manufacturer.

Données de validation sélectionnées



human placenta tissue were subjected to SDS PAGE followed by western blot with 14578-1-AP (Pikachurin antibody) at dilution of 1:400 incubated at room temperature for 1.5 hours.



Immunofluorescent analysis of SH-SY5Y cells using 14578-1-AP (Pikachurin antibody) at dilution of 1:50 and Alexa Fluor 488-conjugated AffiniPure Goat Anti-Rabbit IgG(H+L).