

À des fins de recherche uniquement

Anticorps Polyclonal de lapin anti-RPL7



Numéro de catalogue: 14583-1-AP

5 Publications

Informations de base

Numéro de catalogue:
14583-1-AP

Taille:
150ul, Concentration: 1000 µg/ml by Nanodrop and 447 µg/ml by Bradford method using BSA as the standard;

Hôte:
Lapin

Isotype:
IgG

Immunogen Catalog Number:
AG6104

Numéro d'acquisition GenBank:
BC006095

Identification du gène (NCBI):
6129

Nom complet:
ribosomal protein L7

MW calculé
29 kDa

MW observés:
29-30 kDa

Méthode de purification:
Purification par affinité contre l'antigène

Dilutions recommandées:
WB 1:500-1:3000
IP 0.5-4.0 ug for IP and 1:500-1:2000 for WB
IHC 1:20-1:200
IF 1:50-1:500

Applications

Applications testées:
IF, IHC, IP, WB, ELISA

Demandes citées:
IHC, RIP, WB

Spécificité de l'espèce:
Humain, rat, souris

Espèces citées:
Humain

Remarque-IHC: il est suggéré de démasquer l'antigène avec un tampon de TE buffer pH 9,0; (*) À défaut, le démasquage de l'antigène peut être effectué avec un tampon citrate pH 6,0.

Contrôles positifs:

WB : cellules HEK-293, tissu rénal de souris

IP : cellules HEK-293,

IHC : tissu de cancer de la peau humain,

IF : cellules HEK-293,

Informations générales

The mammalian ribosome comprises 79 ribosomal proteins and four rRNAs, which combine in equimolar ratios to form the small (40S) and large (60S) subunits. Ribosome proteins are a direct and critical target of the PI3K pathway in promoting growth.[PMID:15289434]. RPL7 binds to G-rich structures in 28S rRNA, and plays a regulatory role in the translation apparatus, inhibits cell-free translation of mRNAs. In addition, RPL7 is suggested to have a role as an integral part of natural freeze tolerance[PMID: 18706984]. Besides, RPL7 is responsible for its normal ribosome functions including the nuclear targeting, ribosome assembly and translation[PMID:17258209].

Publications notables

Autrice	Pubmed ID	Journal	Application
Baiwen Chen	34735883	Biochem Biophys Res Commun	WB, RIP
Phaedra R Theodoridis	33568529	Proc Natl Acad Sci U S A	IHC
Rui Su	35145225	Nat Cell Biol	WB

Stockage

Stockage:

Stocker à -20°C. Stable pendant un an après l'expédition.

Tampon de stockage:

PBS avec azoture de sodium à 0,02 % et glycérol à 50 % pH 7,3

L'aliquotage n'est pas nécessaire pour le stockage à -20C

*** Les 20ul contiennent 0,1% de BSA.

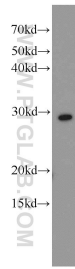
For technical support and original validation data for this product please contact:

T: 1 (888) 4PTGLAB (1-888-478-4522) (toll free in USA), or 1(312) 455-8498 (outside USA)

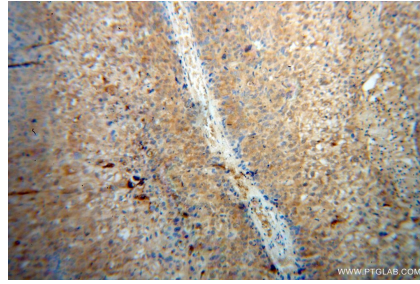
E: proteintech@ptglab.com
W: ptglab.com

This product is exclusively available under Proteintech Group brand and is not available to purchase from any other manufacturer.

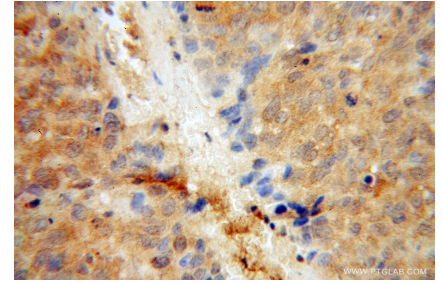
Données de validation sélectionnées



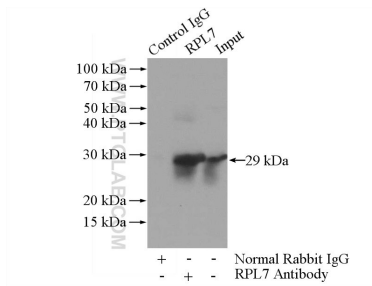
HEK-293 cells were subjected to SDS PAGE followed by western blot with 14583-1-AP (RPL7 antibody) at dilution of 1:1500 incubated at room temperature for 1.5 hours.



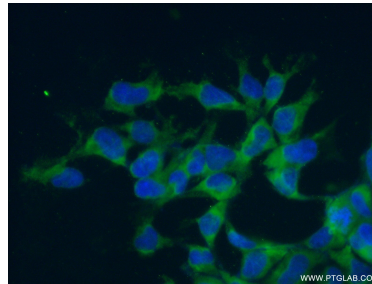
Immunohistochemical analysis of paraffin-embedded human skin cancer using 14583-1-AP (RPL7 antibody) at dilution of 1:100 (under 10x lens).



Immunohistochemical analysis of paraffin-embedded human skin cancer using 14583-1-AP (RPL7 antibody) at dilution of 1:100 (under 40x lens).



IP Result of anti-RPL7 (IP:14583-1-AP, 3ug; Detection:14583-1-AP 1:1000) with HEK-293 cells lysate 880ug.



Immunofluorescent analysis of (4% PFA) fixed HEK-293 cells using 14583-1-AP (RPL7 antibody) at dilution of 1:50 and Alexa Fluor 488-conjugated AffiniPure Goat Anti-Rabbit IgG(H+L).