

À des fins de recherche uniquement

# Anticorps Polyclonal de lapin anti-ERI1



Numéro de catalogue: 14592-1-AP

## Informations de base

<b>Numéro de catalogue:</b> 14592-1-AP	<b>Numéro d'acquisition GenBank:</b> BC035279	<b>Méthode de purification:</b> Purification par affinité contre l'antigène
<b>Taille:</b> 150ul , Concentration: 800 µg/ml by Nanodrop and 500 µg/ml by Bradford method using BSA as the standard;	<b>Identification du gène (NCBI):</b> 90459	<b>Dilutions recommandées:</b> WB 1:500-1:2000 IHC 1:50-1:500 IF 1:10-1:100
<b>Hôte:</b> Lapin	<b>Nom complet:</b> exoribonuclease 1	
<b>Isotype:</b> IgG	<b>MW calculé</b> 40 kDa	
<b>Immunogen Catalog Number:</b> AG6125	<b>MW observés:</b> 46 kDa	

## Applications

<b>Applications testées:</b> IF, IHC, WB, ELISA	<b>Contrôles positifs:</b> WB : cellules K-562, cellules HepG2, cellules HL-60 IHC : tissu de cancer du foie humain, tissu testiculaire humain IF : cellules HepG2,
<b>Spécificité de l'espèce:</b> Humain, rat, souris	
<b>Remarque-IHC: il est suggéré de démasquer l'antigène avec un tampon de TE buffer pH 9,0; (*) À défaut, 'le démasquage de l'antigène peut être 'effectué avec un tampon citrate pH 6,0.</b>	

## Informations générales

ERI1, also named as HEXO, 3'HEXO and THEX1, contains one exonuclease domain and one SAP domain. The SAP domain is necessary for binding to the stem-loop structure of histone mRNAs and to form the ternary complex with SLBP, but not for 3'-end histone mRNA exonuclease activity. It is a RNA exonuclease that binds to the 3'-end of histone mRNAs and degrades them, suggesting that it plays an essential role in histone mRNA decay after replication. It is able to bind other mRNAs. ERI1 is required for 5.8S rRNA 3'-end processing. It also binds to 5.8s ribosomal RNA. ERI1 binds with high affinity to the stem-loop structure of replication-dependent histone pre-mRNAs.

## Stockage

**Stockage:**  
Stocker à -20°C. Stable pendant un an après l'expédition.  
**Tampon de stockage:**  
PBS avec azoture de sodium à 0,02 % et glycérol à 50 % pH 7,3  
L'aliquotage n'est pas nécessaire pour le stockage à -20C

\*\*\* Les 20ul contiennent 0,1% de BSA.

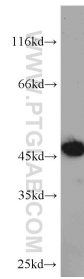
For technical support and original validation data for this product please contact:

T: 1 (888) 4PTGLAB (1-888-478-4522) (toll free in USA), or 1(312) 455-8498 (outside USA)

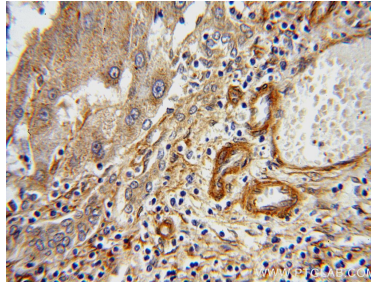
E: proteintech@ptglab.com  
W: ptglab.com

This product is exclusively available under Proteintech Group brand and is not available to purchase from any other manufacturer.

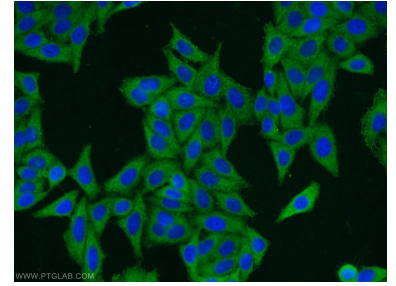
## Données de validation sélectionnées



K-562 cells were subjected to SDS PAGE followed by western blot with 14592-1-AP (ER1 antibody) at dilution of 1:1000 incubated at room temperature for 1.5 hours.



Immunohistochemical analysis of paraffin-embedded human liver cancer using 14592-1-AP (ER1 antibody) at dilution of 1:100 (under 40x lens).



Immunofluorescent analysis of HepG2 cells using 14592-1-AP (ER1 antibody) at dilution of 1:25 and Alexa Fluor 488-conjugated AffiniPure Goat Anti-Rabbit IgG(H+L).