

À des fins de recherche uniquement

# Anticorps Polyclonal de lapin anti-HNRNPU



Numéro de catalogue: 14599-1-AP

14 Publications

## Informations de base

Numéro de catalogue:

14599-1-AP

Taille:

150ul, Concentration: 750 µg/ml by Nanodrop and 620 µg/ml by Bradford method using BSA as the standard;

Hôte:

Lapin

Isotype:

IgG

Immunogen Catalog Number:

AG6141

Numéro d'acquisition GenBank:

BC003621

Identification du gène (NCBI):

3192

Nom complet:

heterogeneous nuclear ribonucleoprotein U (scaffold attachment factor A)

MW calculé

825 aa, 91 kDa

MW observés:

120 kDa

Méthode de purification:

Purification par affinité contre l'antigène

Dilutions recommandées:

WB 1:2000-1:10000

IP 0.5-4.0 ug for IP and 1:500-1:1000 for WB

IF 1:50-1:500

## Applications

Applications testées:

IF, IP, WB, ELISA

Demandes citées:

IF, IP, RIP, WB

Spécificité de l'espèce:

Humain, rat, souris

Espèces citées:

Humain, rat, souris

Contrôles positifs:

WB : cellules HEK-293, cellules HeLa, cellules Jurkat, cellules K-562, tissu pulmonaire de souris

IP : cellules HeLa,

IF : cellules HeLa,

## Informations générales

HNRNPU, also named as HNRPU, SAFA, and U21.1, is a 825 amino acid protein, which is extensively phosphorylated. HNRNPU as a component of ribonucleosomes localized in cytoplasmic mRNP granules containing untranslated mRNAs. HNRNPU is a component of the CRD-mediated complex that promotes MYC mRNA stabilization. HNRNPU Plays a role in the circadian regulation of the core clock component ARNTL/BMAL1 transcription. The calculated molecular weight of HNRNPU is 90 kDa, but the 120 kDa HNRNPU protein is an abundant nucleoplasmic phosphoprotein that can be crosslinked to pre-mRNA in intact cells by UV light (PMID: 1628625).

## Publications notables

Autrice	Pubmed ID	Journal	Application
Li Liu	31527085	J Biol Chem	WB
Hiroaki Suzuki	25378556	Hum Mol Genet	WB
Shaojun Zhang	34737357	Cell Res	WB

## Stockage

Stockage:

Stocker à -20°C. Stable pendant un an après l'expédition.

Tampon de stockage:

PBS avec azoture de sodium à 0,02 % et glycérol à 50 % pH 7,3

L'aliquotage n'est pas nécessaire pour le stockage à -20C

\*\*\* Les 20ul contiennent 0,1% de BSA.

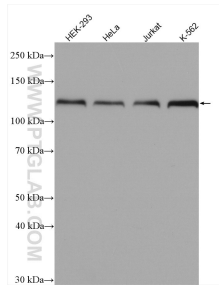
For technical support and original validation data for this product please contact:

T: 1 (888) 4PTGLAB (1-888-478-4522) (toll free in USA), or 1(312) 455-8498 (outside USA)

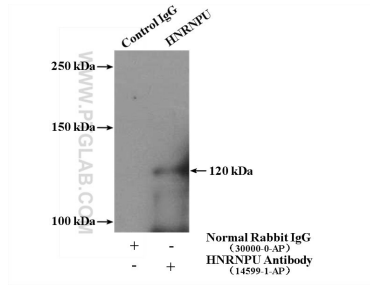
E: [proteintech@ptglab.com](mailto:proteintech@ptglab.com)  
W: [ptglab.com](http://ptglab.com)

This product is exclusively available under Proteintech Group brand and is not available to purchase from any other manufacturer.

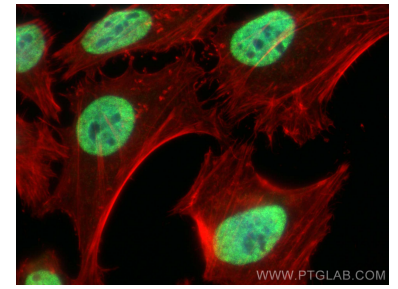
## Données de validation sélectionnées



Various lysates were subjected to SDS PAGE followed by western blot with 14599-1-AP (HNRNPU antibody) at dilution of 1:5000 incubated at room temperature for 1.5 hours.



IP Result of anti-HNRNPU (IP:14599-1-AP, 4ug; Detection:14599-1-AP 1:800) with HeLa cells lysate 2400ug.



Immunofluorescent analysis of (4% PFA) fixed HeLa cells using HNRNPU antibody (14599-1-AP) at dilution of 1:200 and CoraLite®488-Conjugated AffiniPure Goat Anti-Rabbit IgG(H+L), CL594-phalloidin (red).