

À des fins de recherche uniquement

# Anticorps Polyclonal de lapin anti-LC3



Numéro de catalogue: 14600-1-AP

Phare

877 Publications

## Informations de base

Numéro de catalogue:

14600-1-AP

Taille:

150ul, Concentration: 500 µg/ml by Nanodrop;

Hôte:

Lapin

Isotype:

IgG

Immunogen Catalog Number:

AG6144

Numéro d'acquisition GenBank:

BC067797

Identification du gène (NCBI):

81631

Nom complet:

microtubule-associated protein 1 light chain 3 beta

MW calculé

15 kDa

MW observés:

14-18 kDa

Méthode de purification:

Purification par affinité contre l'antigène

Dilutions recommandées:

WB 1:1000-1:5000

IP 0.5-4.0 µg for IP and 1:500-1:2000 for WB

IHC 1:50-1:500

IF 1:250-1:1000

## Applications

Applications testées:

FC, IF, IHC, IP, WB, ELISA

Demandes citées:

CoIP, IF, IHC, IP, WB

Spécificité de l'espèce:

Humain, rat, souris

Espèces citées:

Chèvre, Humain, Lapin, poisson-zèbre, porc, poulet, rat, singe, souris

**Remarque-IHC: il est suggéré de démasquer l'antigène avec un tampon de TE buffer pH 9,0; (\*) À défaut, 'le démasquage de l'antigène peut être effectué avec un tampon citrate pH 6,0.**

Contrôles positifs:

**WB**: cellules HepG2 traitées à la chloroquine, cellules HEK-293 traitées à la chloroquine, cellules HeLa, cellules HSC-T6, cellules NIH/3T3, tissu cardiaque de souris, tissu cérébral de rat, tissu cérébral de souris, tissu de muscle squelettique humain, tissu hépatique de souris, tissu pulmonaire de souris, tissu testiculaire de souris

**IP**: tissu cérébral de souris,

**IHC**: tissu hépatique humain, tissu cérébral de souris, tissu de cancer du sein humain, tissu de gliome humain, tissu testiculaire humain

**IF**: cellules HeLa traitées à la chloroquine, cellules HepG2 traitées à la chloroquine, cellules U2OS traitées à la chloroquine

## Informations générales

Map1LC3, also known as LC3, is the human homolog of yeast Atg8 and is involved in the formation of autophagosomal vacuoles, called autophagosomes. Three human Map1LC3 isoforms, MAP1LC3A, MAP1LC3B, and MAP1LC3C, undergo post-translational modifications during autophagy. And they differ in their post-translation modifications during autophagy. Map1LC3 also exists in two modified forms, an 18 kDa cytoplasmic form that was originally identified as a subunit of the microtubule-associated protein 1, and a 14-16 kDa form that is associated with the autophagosome membrane. This antibody can cross react with MAP1LC3A, MAP1LC3B, and MAP1LC3C.

## Publications notables

Autrice	Pubmed ID	Journal	Application
Xin Xu	36178722	Environ Toxicol	WB,IF
Zeen Zhu	36248959	Front Oncol	WB,IF,IHC
Huanshan He	36183753	Int J Biol Macromol	WB

## Stockage

Stockage:

Stocker à -20°C. Stable pendant un an après l'expédition.

Tampon de stockage:

PBS avec azoture de sodium à 0,02 % et glycérol à 50 % pH 7,3

L'aliquotage n'est pas nécessaire pour le stockage à -20C

\*\*\* Les 20ul contiennent 0,1% de BSA.

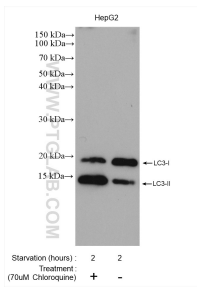
For technical support and original validation data for this product please contact:

T: 1 (888) 4PTGLAB (1-888-478-4522) (toll free in USA), or 1(312) 455-8498 (outside USA)

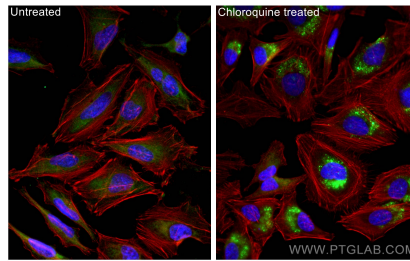
E: proteintech@ptglab.com  
W: ptglab.com

This product is exclusively available under Proteintech Group brand and is not available to purchase from any other manufacturer.

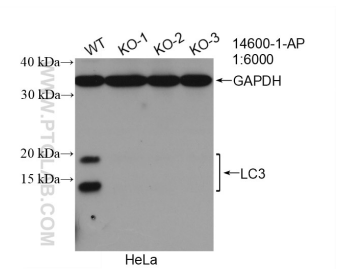
## Données de validation sélectionnées



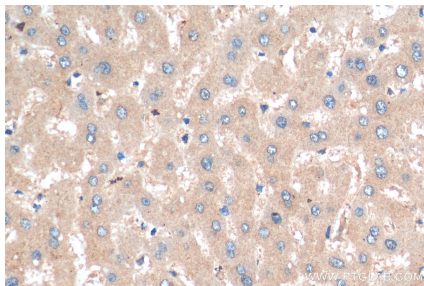
Chloroquine treated HepG2 cells (left) and untreated HepG2 cells (right) after serum deprived for 2 hours were subjected to SDS PAGE followed by western blot with 14600-1-AP (LC3 antibody) at dilution of 1:2500 incubated at room temperature for 1.5 hours.



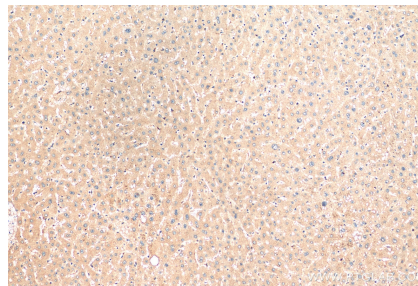
Immunofluorescent analysis of (-20°C Ethanol) fixed Chloroquine treated HeLa cells using LC3 antibody (14600-1-AP) at dilution of 1:500 and CoraLite®488-Conjugated AffiniPure Goat Anti-Rabbit IgG(H+L).



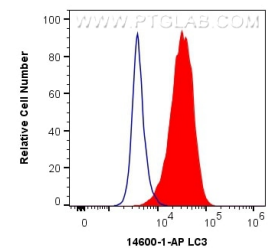
WB result of LC3 antibody (14600-1-AP; 1:6000; room temperature for 1.5 hours) with negative Control and LC3 knockout HeLa cells.



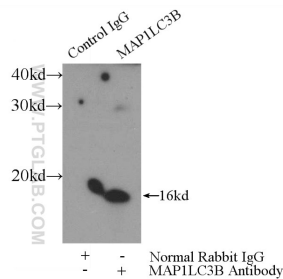
Immunohistochemical analysis of paraffin-embedded human liver tissue slide using 14600-1-AP (LC3 antibody) at dilution of 1:200 (under 10x lens). Heat mediated antigen retrieval with Tris-EDTA buffer (pH 9.0).



Immunohistochemical analysis of paraffin-embedded human liver tissue slide using 14600-1-AP (LC3 antibody) at dilution of 1:200 (under 40x lens). Heat mediated antigen retrieval with Tris-EDTA buffer (pH 9.0).



1X10<sup>6</sup> HeLa cells were intracellularly stained with 0.5 ug Anti-Human LC3 (14600-1-AP) and CoraLite®488-Conjugated AffiniPure Goat Anti-Rabbit IgG(H+L) at dilution 1:1000 (red), or 0.5 ug Rabbit IgG control Rabbit PolyAb (30000-0-AP, Clone: ) (blue). Cells were fixed with 4% PFA and permeabilized with Flow Cytometry Perm Buffer (PF00011-C).



IP Result of anti-LC3 (IP:14600-1-AP, 3ug; Detection:14600-1-AP 1:1000) with mouse brain tissue lysate 4000ug.