

À des fins de recherche uniquement

Anticorps Polyclonal de lapin anti-SMPD1,ASM



Numéro de catalogue: 14609-1-AP

Phare

13 Publications

Informations de base

Numéro de catalogue:

14609-1-AP

Taille:

150ul , Concentration: 500 µg/ml by Nanodrop;

Hôte:

Lapin

Isotype:

IgG

Immunogen Catalog Number:

AG6180

Numéro d'acquisition GenBank:

BC041164

Identification du gène (NCBI):

6609

Nom complet:

sphingomyelin phosphodiesterase 1, acid lysosomal

MW calculé

70 kDa

MW observés:

60 kDa, 70-75 kDa

Méthode de purification:

Purification par affinité contre l'antigène

Dilutions recommandées:

WB 1:500-1:1000

IHC 1:100-1:400

Applications

Applications testées:

IHC, WB, ELISA

Demandes citées:

IF, IHC, WB

Spécificité de l'espèce:

Humain, rat, souris

Espèces citées:

Humain, rat, souris

Contrôles positifs:

WB : tissu cérébral de souris, tissu cérébral de rat, tissu de cervelet de souris

IHC : tissu cérébral humain, tissu d'amygdalite humain

Remarque-IHC: il est suggéré de démasquer l'antigène avec un tampon de TE buffer pH 9,0; (*) À défaut, le démasquage de l'antigène peut être effectué avec un tampon citrate pH 6,0.

Informations générales

SMPD1(Sphingomyelin phosphodiesterase) is also named as ASM and belongs to the acid sphingomyelinase family. It is an important enzyme in sphingolipid metabolism and plays key roles in apoptosis, immunity, development, and cancer. The deficient activity of this enzyme results in Types A and B Niemann-Pick disease (NPD). This protein has 4 isoforms produced by alternative splicing. SMPD1 can produce a 60 kDa peptide with its signal peptide missing.

Publications notables

Autrice	Pubmed ID	Journal	Application
Jonghae Lee	36077841	Cancers (Basel)	WB
Xin Tracy Liu	36333295	Oncogenesis	WB
Yi-Yu Qi	35391788	Drug Des Devel Ther	IF

Stockage

Stockage:

Stocker à -20°C. Stable pendant un an après l'expédition.

Tampon de stockage:

PBS avec azoture de sodium à 0,02 % et glycérol à 50 % pH 7,3

L'aliquotage n'est pas nécessaire pour le stockage à -20C

***** Les 20ul contiennent 0,1% de BSA.**

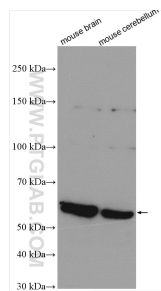
For technical support and original validation data for this product please contact:

T: 1 (888) 4PTGLAB (1-888-478-4522) (toll free in USA), or 1(312) 455-8498 (outside USA)

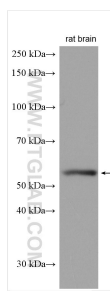
E: proteintech@ptglab.com
W: ptglab.com

This product is exclusively available under Proteintech Group brand and is not available to purchase from any other manufacturer.

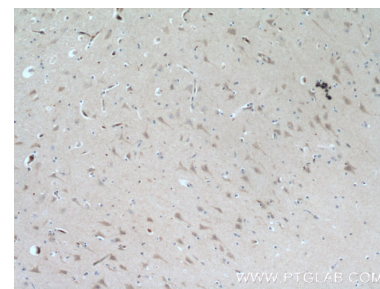
Données de validation sélectionnées



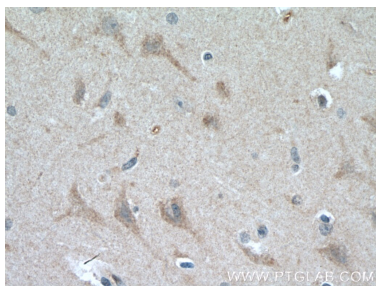
Various lysates were subjected to SDS PAGE followed by western blot with 14609-1-AP (SMPD1,ASM antibody) at dilution of 1:600 incubated at room temperature for 1.5 hours.



rat brain tissue were subjected to SDS PAGE followed by western blot with 14609-1-AP (SMPD1,ASM antibody) at dilution of 1:600 incubated at room temperature for 1.5 hours.



Immunohistochemical analysis of paraffin-embedded human brain tissue slide using 14609-1-AP (SMPD1,ASM Antibody) at dilution of 1:200 (under 10x lens). Heat mediated antigen retrieval with Tris-EDTA buffer (pH 9.0).



Immunohistochemical analysis of paraffin-embedded human brain tissue slide using 14609-1-AP (SMPD1,ASM Antibody) at dilution of 1:200 (under 40x lens). Heat mediated antigen retrieval with Tris-EDTA buffer (pH 9.0).