

À des fins de recherche uniquement

# Anticorps Polyclonal de lapin anti-SHARPIN



Numéro de catalogue: 14626-1-AP

Phare

85 Publications

## Informations de base

Numéro de catalogue:

14626-1-AP

Taille:

150ul, Concentration: 650 µg/ml by Nanodrop and 327 µg/ml by Bradford method using BSA as the standard;

Hôte:

Lapin

Isotype:

IgG

Immunogen Catalog Number:

AG6201

Numéro d'acquisition GenBank:

BC025244

Identification du gène (NCBI):

81858

Nom complet:

SHANK-associated RH domain interactor

MW calculé

40 kDa

MW observés:

40 kDa

Méthode de purification:

Purification par affinité contre l'antigène

Dilutions recommandées:

WB 1:5000-1:50000

IP 0.5-4.0 ug for IP and 1:500-1:3000 for WB

IHC 1:100-1:400

IF 1:50-1:500

## Applications

Applications testées:

IF, IHC, IP, WB, ELISA

Demandes citées:

CoIP, IF, IHC, IP, WB

Spécificité de l'espèce:

Humain, souris

Espèces citées:

Humain, rat, souris

**Remarque-IHC: il est suggéré de démasquer l'antigène avec un tampon de TE buffer pH 9,0; (\*) A défaut, 'le démasquage de l'antigène peut être effectué avec un tampon citrate pH 6,0.**

Contrôles positifs:

WB : cellules A549, cellules Jurkat, cellules Raji, tissu cérébral de souris, tissu de muscle squelettique de souris

IP : cellules Raji,

IHC : tissu de lymphome humain, tissu d'intestin grêle humain

IF : cellules Jurkat,

## Informations générales

SHARPIN is as a third component of the linear ubiquitin chain assembly complex (LUBAC), recruited to the CD40 and TNF receptor signaling complexes together with its other constituents, HOIL1 and HOIP(PMID:21455173).SHARPIN is enriched in the postsynaptic density and forms a complex with SHANK in heterologous cells and brain(PMID:11178875).It has 2 isoforms produced by alternative splicing.

## Publications notables

Autrice	Pubmed ID	Journal	Application
Matthias Kist	32999468	Cell Death Differ	WB,IP
Lucia Taraborrelli	30254289	Nat Commun	WB
Umar Butt	36148554	J Cell Sci	WB

## Stockage

Stockage:

Stocker à -20°C. Stable pendant un an après l'expédition.

Tampon de stockage:

PBS avec azoture de sodium à 0,02 % et glycérol à 50 % pH 7,3

L'aliquotage n'est pas nécessaire pour le stockage à -20C

**\*\*\* Les 20ul contiennent 0,1% de BSA.**

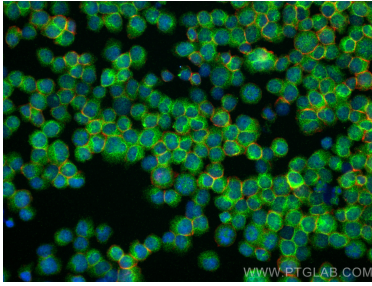
For technical support and original validation data for this product please contact:

T: 1 (888) 4PTGLAB (1-888-478-4522) (toll free in USA), or 1(312) 455-8498 (outside USA)

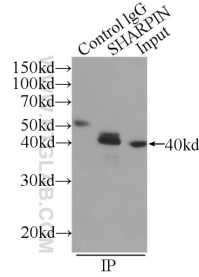
E: [proteintech@ptglab.com](mailto:proteintech@ptglab.com)  
W: [ptglab.com](http://ptglab.com)

**This product is exclusively available under Proteintech Group brand and is not available to purchase from any other manufacturer.**

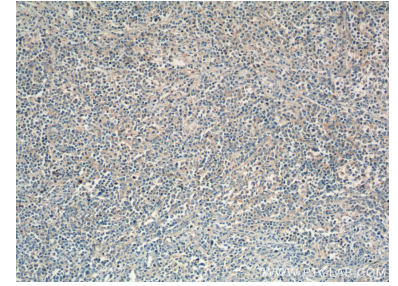
## Données de validation sélectionnées



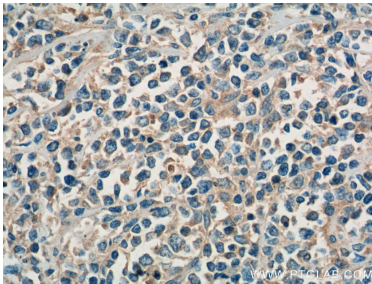
Immunofluorescent analysis of (4% PFA) fixed Jurkat cells using SHARPIN antibody (14626-1-AP) at dilution of 1:200 and CoraLite®488-Conjugated AffiniPure Goat Anti-Rabbit IgG(H+L), CL594-Phalloidin (red).



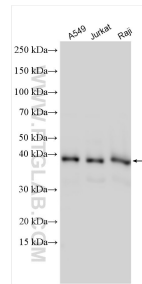
IP Result of anti-SHARPIN (IP:14626-1-AP, 3ug; Detection:14626-1-AP 1:1500) with Raji cells lysate 2520ug.



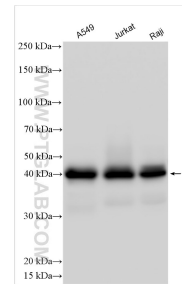
Immunohistochemical analysis of paraffin-embedded human lymphoma tissue slide using 14626-1-AP (SHARPIN Antibody) at dilution of 1:200 (under 10x lens). Heat mediated antigen retrieval with Tris-EDTA buffer (pH 9.0).



Immunohistochemical analysis of paraffin-embedded human lymphoma tissue slide using 14626-1-AP (SHARPIN Antibody) at dilution of 1:200 (under 40x lens). Heat mediated antigen retrieval with Tris-EDTA buffer (pH 9.0).



Various lysates were subjected to SDS PAGE followed by western blot with 14626-1-AP (SHARPIN antibody) at dilution of 1:25000 incubated at room temperature for 1.5 hours.



A549 cells were subjected to SDS PAGE followed by western blot with 14626-1-AP (SHARPIN antibody) at dilution of 1:6000 incubated at room temperature for 1.5 hours.