

À des fins de recherche uniquement

Anticorps Polyclonal de lapin anti-PPP1R15B



Numéro de catalogue: 14634-1-AP

Phare

18 Publications

Informations de base

Numéro de catalogue:

14634-1-AP

Taille:

150ul, Concentration: 600 µg/ml by Nanodrop;

Hôte:

Lapin

Isotype:

IgG

Immunogen Catalog Number:

AG6213

Numéro d'acquisition GenBank:

BC065280

Identification du gène (NCBI):

84919

Nom complet:

protein phosphatase 1, regulatory (inhibitor) subunit 15B

MW calculé

79 kDa

MW observés:

100-110 kDa

Méthode de purification:

Purification par affinité contre l'antigène

Dilutions recommandées:

WB 1:5000-1:50000

IP 0.5-4.0 ug for IP and 1:500-1:2000 for WB

IHC 1:200-1:800

IF 1:200-1:800

Applications

Applications testées:

IF, IHC, IP, WB, ELISA

Demandes citées:

CoIP, IF, IP, WB

Spécificité de l'espèce:

Humain, rat, souris

Espèces citées:

Humain, souris

Remarque-IHC: il est suggéré de démasquer l'antigène avec un tampon de TE buffer pH 9.0; (*) À défaut, le démasquage de l'antigène peut être effectué avec un tampon citrate pH 6.0.

Contrôles positifs:

WB : cellules A2780, cellules HEK-293, cellules MCF-7, cellules MDA-MB-231, cellules SGC-7901, cellules SKOV-3

IP : cellules MCF-7,

IHC : tissu cérébral de souris, tissu de cervelet de souris

IF : cellules SH-SY5Y, cellules HepG2

Informations générales

Protein phosphatase 1 regulatory subunit 15B(PPP1R15B) is a member of PPP1R15 family, it forms a complex with protein phosphatase1(PP1) and NCK1/2, maintaining low levels of EIF2S1 phosphorylation in unstressed cells, thus is also named constitutive repressor of eIF2alpha phosphorylation (CReP). PPP1R15B is associated in endoplasmic reticulum (ER) stress response resulting to a role in translation regulation. Knock-down of PPP1R15B strongly protected mammalian cells against oxidative stress, peroxynitrite stress, and more modestly against accumulation of malformed proteins in the ER. Recently, PPP1R15B was found to associate with cell membranes and regulate membrane traffic in a PP1c-independent manner, suggesting a novel link between translation and traffic. MW of PPP1R15B is 80 kDa. Observed MW of PPP1R15B is from 100-110 kDa maybe due to phosphorylation (PMID: 28492545).

Publications notables

Autrice	Pubmed ID	Journal	Application
Rebecca R Miles	34597669	J Biol Chem	WB
Kyle Friend	26406898	PLoS One	WB
Kloft Nicole N	22915583	J Biol Chem	WB, CoIP

Stockage

Stockage:

Stocker à -20°C. Stable pendant un an après l'expédition.

Tampon de stockage:

PBS avec azoture de sodium à 0,02 % et glycérol à 50 % pH 7,3

L'aliquotage n'est pas nécessaire pour le stockage à -20C

*** Les 20ul contiennent 0,1% de BSA.

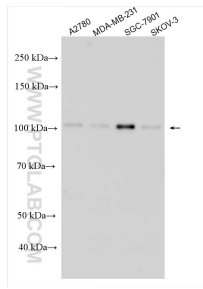
For technical support and original validation data for this product please contact:

T: 1 (888) 4PTGLAB (1-888-478-4522) (toll free in USA), or 1(312) 455-8498 (outside USA)

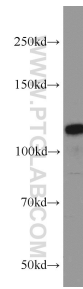
E: proteintech@ptglab.com
W: ptglab.com

This product is exclusively available under Proteintech Group brand and is not available to purchase from any other manufacturer.

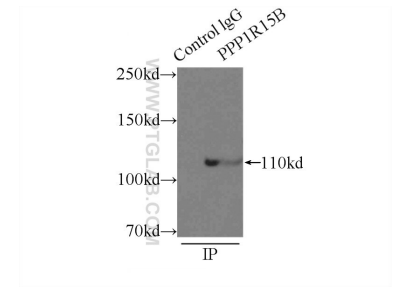
Données de validation sélectionnées



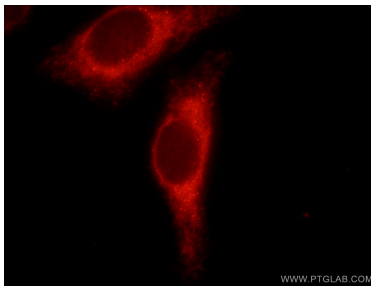
Various lysates were subjected to SDS PAGE followed by western blot with 14634-1-AP (PPP1R15B antibody) at dilution of 1:15000 incubated at room temperature for 1.5 hours.



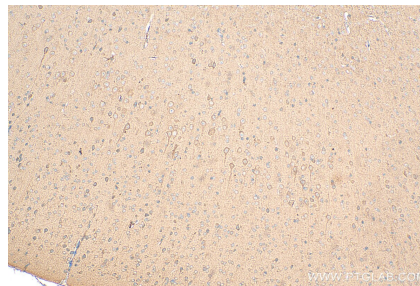
SGC-7901 cells were subjected to SDS PAGE followed by western blot with 14634-1-AP (PPP1R15B antibody) at dilution of 1:1000 incubated at room temperature for 1.5 hours.



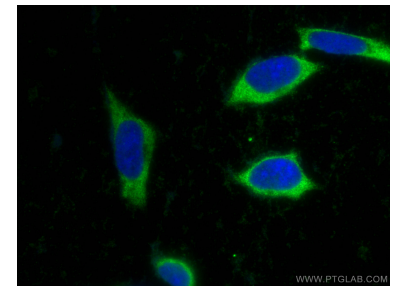
IP Result of anti-PPP1R15B;CoIP (IP:14634-1-AP, 3ug; Detection:14634-1-AP 1:1000) with MCF-7 cells lysate 2500ug.



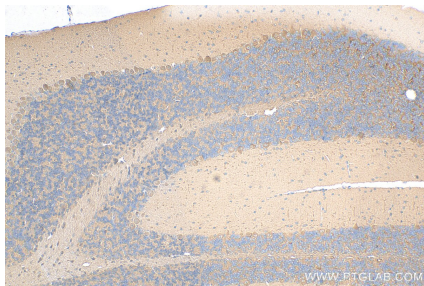
Immunofluorescent analysis of HepG2 cells using 14634-1-AP (PPP1R15B antibody) at dilution of 1:50 and Rhodamine-labeled goat anti-rabbit IgG.



Immunohistochemical analysis of paraffin-embedded mouse brain tissue slide using 14634-1-AP (PPP1R15B antibody) at dilution of 1:400 (under 10x lens). Heat mediated antigen retrieval with Tris-EDTA buffer (pH 9.0).



Immunofluorescent analysis of (-20°C Ethanol) fixed SH-SY5Y cells using PPP1R15B antibody (14634-1-AP) at dilution of 1:400 and CoraLite@488-Conjugated AffiniPure Goat Anti-Rabbit IgG(H+L).



Immunohistochemical analysis of paraffin-embedded mouse cerebellum tissue slide using 14634-1-AP (PPP1R15B antibody) at dilution of 1:400 (under 10x lens). Heat mediated antigen retrieval with Tris-EDTA buffer (pH 9.0).