

À des fins de recherche uniquement

Anticorps Polyclonal de lapin anti-CNPY2, MSAP



Numéro de catalogue: 14635-1-AP

Phare

12 Publications

Informations de base

Numéro de catalogue:
14635-1-AP

Taille:
150ul, Concentration: 300 µg/ml by Nanodrop and 153 µg/ml by Bradford method using BSA as the standard;

Hôte:
Lapin

Isotype:
IgG

Immunogen Catalog Number:
AG6214

Numéro d'acquisition GenBank:
BC065015

Identification du gène (NCBI):
10330

Nom complet:
canopy 2 homolog (zebrafish)

MW calculé
21 kDa

MW observés:
17-21 kDa

Méthode de purification:
Purification par affinité contre l'antigène

Dilutions recommandées:
WB 1:1000-1:8000
IP 0.5-4.0 ug for IP and 1:500-1:1000 for WB
IHC 1:200-1:800
IF 1:20-1:200

Applications

Applications testées:
FC, IF, IHC, IP, WB, ELISA

Demandes citées:
IF, IHC, WB

Spécificité de l'espèce:
Humain, rat, souris

Espèces citées:
Humain, rat, souris

Remarque-IHC: il est suggéré de démasquer l'antigène avec un tampon de TE buffer pH 9,0; (*) A défaut, 'le démasquage de l'antigène peut être 'effectué avec un tampon citrate pH 6,0.

Contrôles positifs:

WB : cellules HepG2, tissu hépatique de rat, tissu hépatique de souris, tissu hépatique humain, tissu pancréatique de souris

IP : cellules HepG2,

IHC : tissu hépatique humain, tissu de cancer du pancréas humain

IF : cellules HepG2,

Informations générales

CNPY2, also named as MSAP, TMEM4 and ZSIG9, is a positive regulator of neurite outgrowth. It interacts with the ezrin-radixin-moesin (ERM)-like myosin regulatory light chain-interacting protein (MIR), and the two proteins are co-localized in cell lines and in primary neurons. CNPY2 can stabilize MRLC and thus bring about an increase in neurite outgrowth. (PMID: 12826659) This antibody is specific to CNPY2.

Publications notables

Autrice	Pubmed ID	Journal	Application
Feng Hong	28869608	Nat Struct Mol Biol	WB
Lina Zhao	31625681	J Cell Mol Med	WB
Chun-Ling Guo	36422742	Apoptosis	WB,IF

Stockage

Stockage:

Stocker à -20°C. Stable pendant un an après l'expédition.

Tampon de stockage:

PBS avec azoture de sodium à 0,02 % et glycérol à 50 % pH 7,3

L'aliquotage n'est pas nécessaire pour le stockage à -20C

*** Les 20ul contiennent 0,1% de BSA.

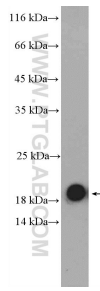
For technical support and original validation data for this product please contact:

T: 1 (888) 4PTGLAB (1-888-478-4522) (toll free in USA), or 1(312) 455-8498 (outside USA)

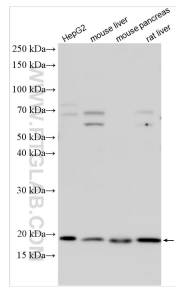
E: proteintech@ptglab.com
W: ptglab.com

This product is exclusively available under Proteintech Group brand and is not available to purchase from any other manufacturer.

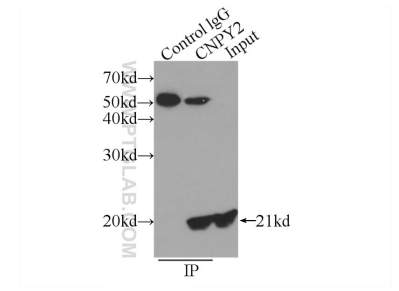
Données de validation sélectionnées



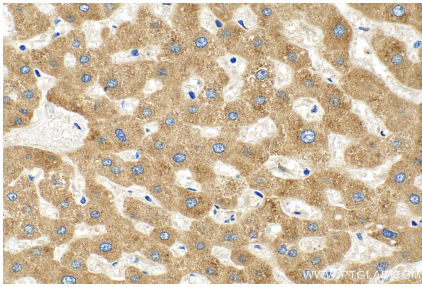
mouse pancreas tissue were subjected to SDS PAGE followed by western blot with 14635-1-AP (CNPY2,MSAP antibody) at dilution of 1:300 incubated at room temperature for 1.5 hours.



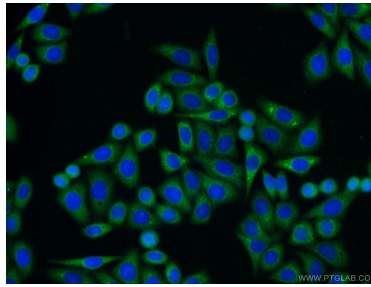
Various lysates were subjected to SDS PAGE followed by western blot with 14635-1-AP (CNPY2, MSAP antibody) at dilution of 1:4000 incubated at room temperature for 1.5 hours.



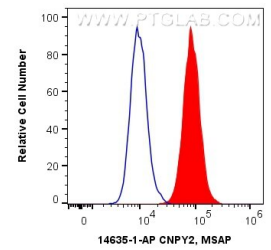
IP Result of anti-CNPY2,MSAP (IP:14635-1-AP, 3ug; Detection:14635-1-AP 1:500) with HepG2 cells lysate 600ug.



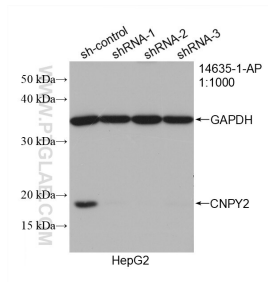
Immunohistochemical analysis of paraffin-embedded human liver tissue slide using 14635-1-AP (CNPY2, MSAP antibody) at dilution of 1:400 (under 40x lens). Heat mediated antigen retrieval with Sodium Citrate buffer (pH 6.0).



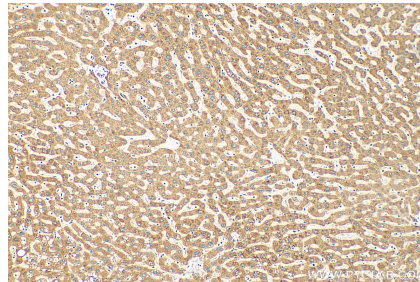
Immunofluorescent analysis of HepG2 cells using 14635-1-AP (CNPY2,MSAP antibody) at dilution of 1:50 and Alexa Fluor 488-conjugated AffiniPure Goat Anti-Rabbit IgG(H+L).



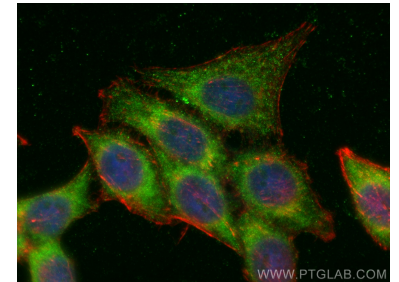
1X10⁶ HepG2 cells were intracellularly stained with 0.4 ug Anti-Human CNPY2, MSAP (14635-1-AP) and CoraLite®488-Conjugated AffiniPure Goat Anti-Rabbit IgG(H+L) at dilution 1:1000 (red), or 0.4 ug Isotype Control. Cells were fixed with 4% PFA and permeabilized with Flow Cytometry Perm Buffer (PF00011-C).



WB result of CNPY2, MSAP antibody (14635-1-AP; 1:1000; incubated at room temperature for 1.5 hours) with sh-Control and sh-CNPY2, MSAP transfected HepG2 cells.



Immunohistochemical analysis of paraffin-embedded human liver tissue slide using 14635-1-AP (CNPY2, MSAP antibody) at dilution of 1:400 (under 10x lens). Heat mediated antigen retrieval with Sodium Citrate buffer (pH 6.0).



Immunofluorescent analysis of (-20°C Ethanol) fixed HepG2 cells using CNPY2, MSAP antibody (14635-1-AP) at dilution of 1:200 and CoraLite®488-Conjugated AffiniPure Goat Anti-Rabbit IgG(H+L), CL594-Phalloidin (red).