

À des fins de recherche uniquement

# Anticorps Polyclonal de lapin anti-REEP5



Numéro de catalogue: 14643-1-AP

Phare

39 Publications

## Informations de base

Numéro de catalogue:

14643-1-AP

Taille:

150ul, Concentration: 700 µg/ml by Nanodrop and 300 µg/ml by Bradford method using BSA as the standard;

Hôte:

Lapin

Isotype:

IgG

Immunogen Catalog Number:

AG6229

Numéro d'acquisition GenBank:

BC065926

Identification du gène (NCBI):

7905

Nom complet:

receptor accessory protein 5

MW calculé

21 kDa

MW observés:

18-21 kDa

Méthode de purification:

Purification par affinité contre l'antigène

Dilutions recommandées:

WB 1:2000-1:10000

IP 0.5-4.0 ug for IP and 1:500-1:2000 for WB

IHC 1:300-1:1200

IF 1:50-1:500

## Applications

Applications testées:

FC, IF, IHC, IP, WB, ELISA

Demandes citées:

IF, IHC, IP, WB

Spécificité de l'espèce:

Humain, rat, souris

Espèces citées:

Humain, singe, souris, xénope

**Remarque-IHC: il est suggéré de démasquer l'antigène avec un tampon de TE buffer pH 9,0; (\*) A défaut, 'le démasquage de l'antigène peut être 'effectué avec un tampon citrate pH 6,0.**

Contrôles positifs:

WB : cellules HeLa, tissu cardiaque de rat, tissu cardiaque de souris, tissu cérébral de rat, tissu cérébral de souris, tissu hépatique humain

IP : cellules HeLa,

IHC : tissu de cancer du côlon humain,

IF : cellules A549, cellules HeLa

## Informations générales

REEP5 (receptor expression-enhancing protein 5), also named as C5orf18, DP1 or TB2, is a membrane protein belonging to DP1/Yop1p protein family. All REEP proteins contain a conserved TB2/DP1, HVA22 domain which is involved in intracellular trafficking and secretion (PMID: 19123125). REEP5 is expressed in circumvallate papillae and testis, and may have the function to influence functional cell surface expression of taste receptors (PMID: 16720576). REEP5 can interact with atlastins (ATL1 and ATL2) which are involved in modulating the structure of ER network (PMID: 19665976).

## Publications notables

Autrice	Pubmed ID	Journal	Application
Andrea Tirinci	36139500	Cells	WB
Benoît Renvoisé	27638887	Hum Mol Genet	WB
M. Elena Garcia-Pardo	34496765	BMC Bioinformatics	IF

## Stockage

Stockage:

Stocker à -20°C. Stable pendant un an après l'expédition.

Tampon de stockage:

PBS avec azoture de sodium à 0,02 % et glycérol à 50 % pH 7,3

L'aliquotage n'est pas nécessaire pour le stockage à -20C

\*\*\* Les 20ul contiennent 0,1% de BSA.

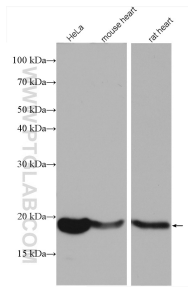
For technical support and original validation data for this product please contact:

T: 1 (888) 4PTGLAB (1-888-478-4522) (toll free in USA), or 1(312) 455-8498 (outside USA)

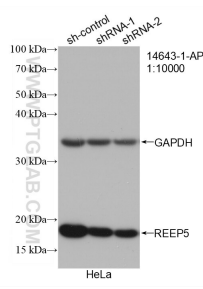
E: proteintech@ptglab.com  
W: ptglab.com

This product is exclusively available under Proteintech Group brand and is not available to purchase from any other manufacturer.

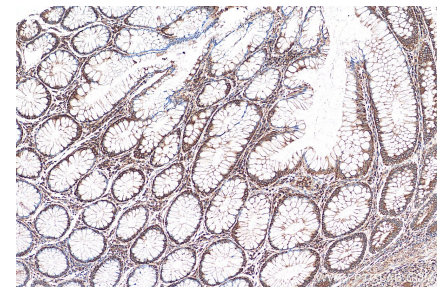
## Données de validation sélectionnées



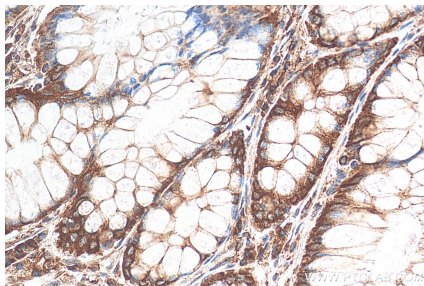
Various lysates were subjected to SDS PAGE followed by western blot with 14643-1-AP (REEP5 antibody) at dilution of 1:5000 incubated at room temperature for 1.5 hours.



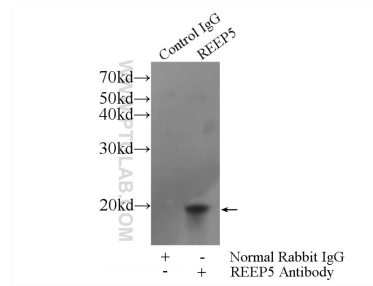
WB result of REEP5 antibody (14643-1-AP; 1:10000; incubated at room temperature for 1.5 hours) with sh-Control and sh-REEP5 transfected HeLa cells.



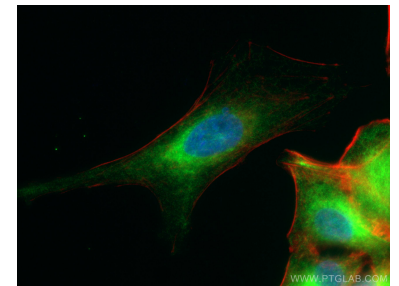
Immunohistochemical analysis of paraffin-embedded human colon cancer tissue slide using 14643-1-AP (REEP5 antibody) at dilution of 1:600 (under 10x lens). Heat mediated antigen retrieval with Tris-EDTA buffer (pH 9.0).



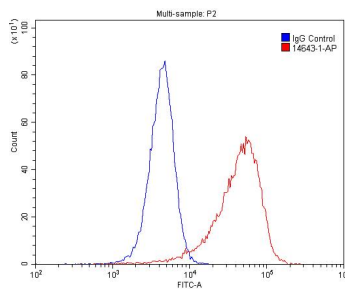
Immunohistochemical analysis of paraffin-embedded human colon cancer tissue slide using 14643-1-AP (REEP5 antibody) at dilution of 1:600 (under 40x lens). Heat mediated antigen retrieval with Tris-EDTA buffer (pH 9.0).



IP Result of anti-REEP5 (IP:14643-1-AP, 3ug; Detection:14643-1-AP 1:1000) with HeLa cells lysate 2400ug.



Immunofluorescent analysis of (4% PFA) fixed A549 cells using REEP5 antibody (14643-1-AP) at dilution of 1:200 and CoraLite®488-Conjugated AffiniPure Goat Anti-Rabbit IgG(H+L). F-actin is stained using CL555-phalloidin (red) and DNA is stained by DAPI (blue).



$1 \times 10^6$  HeLa cells were stained with .2ug REEP5 antibody (14643-1-AP, red) and control antibody (blue). Alexa Fluor 488-conjugated AffiniPure Goat Anti-Rabbit IgG(H+L) with dilution 1:1500. Cells were fixed with 4% PFA and permeabilized with 0.1% Triton X-100.