

À des fins de recherche uniquement

# Anticorps Polyclonal de lapin anti-ESX1



Numéro de catalogue: 14657-1-AP

## Informations de base

Numéro de catalogue:  
14657-1-AP

Taille:  
150ul, Concentration: 350 µg/ml by Nanodrop and 187 µg/ml by Bradford method using BSA as the standard;

Hôte:  
Lapin

Isotype:  
IgG

Immunogen Catalog Number:  
AG6269

Numéro d'acquisition GenBank:  
BC053599

Identification du gène (NCBI):  
80712

Nom complet:  
ESX homeobox 1

MW calculé  
44 kDa

MW observés:  
65 kDa

Méthode de purification:  
Purification par affinité contre l'antigène

Dilutions recommandées:  
WB 1:500-1:1000  
IP 0.5-4.0 ug for IP and 1:500-1:1000 for WB

## Applications

Applications testées:  
IP, WB, ELISA

Spécificité de l'espèce:  
Humain, souris

Contrôles positifs:

WB : tissu cérébral de souris,

IP : tissu cérébral de souris,

## Informations générales

ESX1, also named as ESX1L and ESX1R, is an X-linked homeobox gene primarily expressed in the placenta and testis, with physiological functions in placenta/fetus development and spermatogenesis. It has a substantively different C-terminal region subject to strong purifying selection. ESX1 can be cleaved into 2 part: ESXR1-N(45kd) and ESXR1-C(20kd). ESXR1-N acts as a transcriptional repressor. ESXR1-C has the ability to inhibit cyclin turnover.

## Stockage

Stockage:

Stocker à -20°C. Stable pendant un an après l'expédition.

Tampon de stockage:

PBS avec azoture de sodium à 0,02 % et glycérol à 50 % pH 7,3

L'aliquotage n'est pas nécessaire pour le stockage à -20C

\*\*\* Les 20ul contiennent 0,1% de BSA.

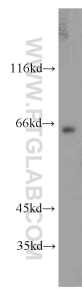
For technical support and original validation data for this product please contact:

T: 1 (888) 4PTGLAB (1-888-478-4522) (toll free in USA), or 1(312) 455-8498 (outside USA)

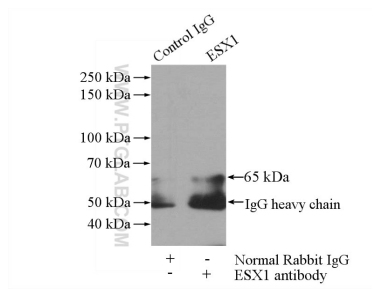
E: [proteintech@ptglab.com](mailto:proteintech@ptglab.com)  
W: [ptglab.com](http://ptglab.com)

This product is exclusively available under Proteintech Group brand and is not available to purchase from any other manufacturer.

## Données de validation sélectionnées



mouse brain tissue were subjected to SDS PAGE followed by western blot with 14657-1-AP (ESX1 antibody) at dilution of 1:800 incubated at room temperature for 1.5 hours.



IP Result of anti-ESX1 (IP:14657-1-AP, 4ug; Detection:14657-1-AP 1:500) with mouse brain tissue lysate 3440ug.