

À des fins de recherche uniquement

# Anticorps Polyclonal de lapin anti-AFF4



Numéro de catalogue: 14662-1-AP

Phare

8 Publications

## Informations de base

<b>Numéro de catalogue:</b> 14662-1-AP	<b>Numéro d'acquisition GenBank:</b> BC063007	<b>Méthode de purification:</b> Purification par affinité contre l'antigène
<b>Taille:</b> 150ul, Concentration: 1100 µg/ml by Nanodrop;	<b>Identification du gène (NCBI):</b> 27125	<b>Dilutions recommandées:</b> WB 1:5000-1:50000 IP 0.5-4.0 ug for IP and 1:5000-1:50000 for WB IF 1:50-1:500
<b>Hôte:</b> Lapin	<b>Nom complet:</b> AF4/FMR2 family, member 4	
<b>Isotype:</b> IgG	<b>MW calculé:</b> 127 kDa	
<b>Immunogen Catalog Number:</b> AG6336	<b>MW observés:</b> 140-150 kDa	

## Applications

<b>Applications testées:</b> IF, IP, WB, ELISA	<b>Contrôles positifs:</b>
<b>Demandes citées:</b> WB	<b>WB :</b> cellules HEK-293, cellules HeLa, cellules HepG2, tissu cérébral de rat, tissu cérébral de souris
<b>Spécificité de l'espèce:</b> Humain, souris	<b>IP :</b> cellules HeLa,
<b>Espèces citées:</b> Humain, souris	<b>IF :</b> cellules L02,

## Informations générales

Transcriptional controlled by RNA polymerase II (Pol II) is a multi-step process requiring the concerted action of multiple factors and contacts with the DNA template for the proper synthesis of nascent RNA [PMID:12676794]. ELL1 was demonstrated to be a Pol II elongation factor capable of enhancing the catalytic rate of transcription elongation by reducing transient pausing by the enzyme [PMID:8596958]. AFF4 was initially identified as a fusion partner of the MLL (mixed-lineage leukemia) gene participated in infant acute lymphoblastic leukemia, and a component of the ELL/p-TEFb elongation complex. AFF4 interacts with positive transcription elongation factor-b while also repressing Tat transactivation of HIV-1 [PMID:17389929].

## Publications notables

Autrice	Pubmed ID	Journal	Application
Jun Wu	28878233	Sci Rep	WB
Bin Zheng	33446572	Genes Dev	WB
Dan Tang	32128251	Cell Discov	WB

## Stockage

**Stockage:**  
Stocker à -20°C. Stable pendant un an après l'expédition.  
**Tampon de stockage:**  
PBS avec azoture de sodium à 0,02 % et glycérol à 50 % pH 7,3  
L'aliquotage n'est pas nécessaire pour le stockage à -20C

\*\*\* Les 20ul contiennent 0,1% de BSA.

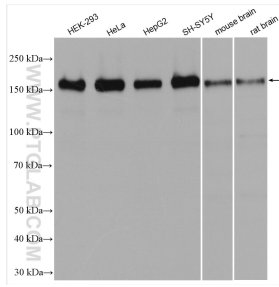
For technical support and original validation data for this product please contact:

T: 1 (888) 4PTGLAB (1-888-478-4522) (toll free in USA), or 1(312) 455-8498 (outside USA)

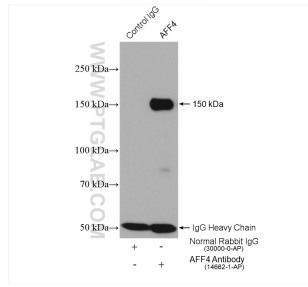
E: proteintech@ptglab.com  
W: ptglab.com

This product is exclusively available under Proteintech Group brand and is not available to purchase from any other manufacturer.

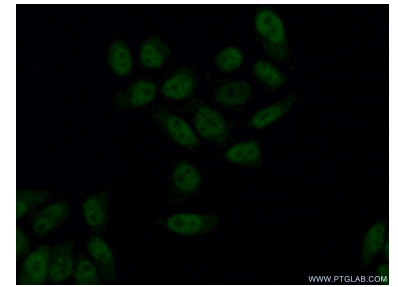
## Données de validation sélectionnées



Various lysates were subjected to SDS PAGE followed by western blot with 14662-1-AP (AFF4 antibody) at dilution of 1:20000 incubated at room temperature for 1.5 hours.



IP result of anti-AFF4(IP:14662-1-AP, 4ug; Detection:14662-1-AP 1:20000) with HeLa cells lysate 1880 ug.



Immunofluorescent analysis of (4% PFA) fixed LO2 cells using 14662-1-AP (AFF4 antibody) at dilution of 1:50 and Alexa Fluor 488-conjugated AffiniPure Goat Anti-Rabbit IgG(H+L).