

À des fins de recherche uniquement

# Anticorps Polyclonal de lapin anti-PAK4



Numéro de catalogue: 14685-1-AP

Phare

16 Publications

## Informations de base

Numéro de catalogue:  
14685-1-AP

Taille:  
150ul, Concentration: 700 µg/ml by Nanodrop and 513 µg/ml by Bradford method using BSA as the standard;

Hôte:  
Lapin

Isotype:  
IgG

Immunogen Catalog Number:  
AG5981

Numéro d'acquisition GenBank:  
BC025282

Identification du gène (NCBI):  
10298

Nom complet:  
p21 protein (Cdc42/Rac)-activated kinase 4

MW calculé:  
64 kDa

MW observés:  
64 kDa

Méthode de purification:  
Purification par affinité contre l'antigène

Dilutions recommandées:  
WB 1:500-1:2000  
IP 0.5-4.0 ug for IP and 1:500-1:1000 for WB  
IF 1:10-1:100

## Applications

Applications testées:  
FC, IF, IP, WB, ELISA

Demandes citées:  
IF, IHC, WB

Spécificité de l'espèce:  
Humain, rat, souris

Espèces citées:  
Humain, souris

Contrôles positifs:

WB : cellules COLO 320, cellules HeLa, cellules PC-3, tissu cutané de rat

IP : tissu hépatique de souris,

IF : cellules HeLa,

## Informations générales

PAK4(p21-activated kinase 4) is also named as KIAA1142. It belongs to the protein kinase superfamily. PAK4 regulates cell morphology, cytoskeletal organization, and cell proliferation and migration. It can also function as an antiapoptotic protein (PMID:14517283). It has 4 isoforms produced by alternative splicing. And it can be autophosphorylated on serine residues when activated by CDC42/p21 (PMID:11278822).

## Publications notables

Autrice	Pubmed ID	Journal	Application
Yohendran Baskaran	34493720	Nat Commun	WB,IF
Parisa Rabieifar	31594963	Sci Rep	IHC,IF
Atreyi Dasgupta	33168646	Cancer Res	WB,IHC

## Stockage

Stockage:

Stocker à -20°C. Stable pendant un an après l'expédition.

Tampon de stockage:

PBS avec azoture de sodium à 0,02 % et glycérol à 50 % pH 7,3

L'aliquotage n'est pas nécessaire pour le stockage à -20C

\*\*\* Les 20ul contiennent 0,1% de BSA.

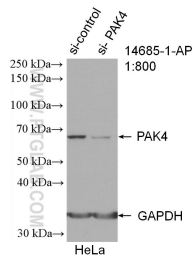
For technical support and original validation data for this product please contact:

T: 1 (888) 4PTGLAB (1-888-478-4522) (toll free in USA), or 1(312) 455-8498 (outside USA)

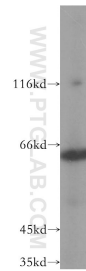
E: proteintech@ptglab.com  
W: ptglab.com

This product is exclusively available under Proteintech Group brand and is not available to purchase from any other manufacturer.

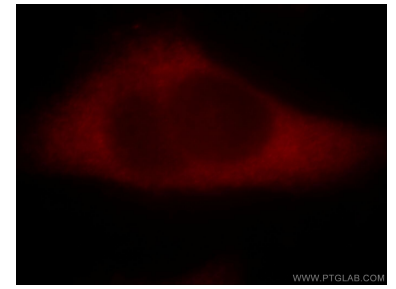
## Données de validation sélectionnées



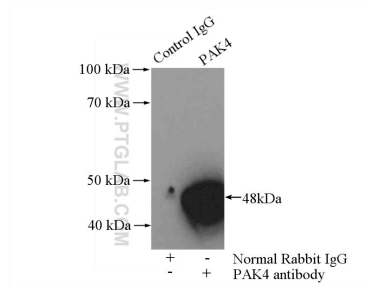
WB result of PAK4 antibody (14685-1-AP; 1:800; incubated at room temperature for 1.5 hours) with sh-Control and sh-PAK4 transfected HeLa cells.



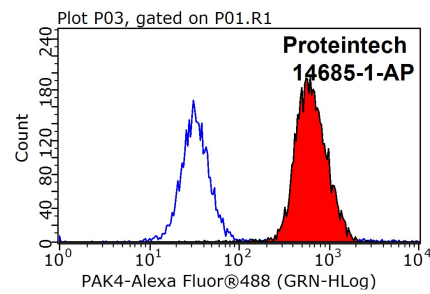
COLO 320 cells were subjected to SDS PAGE followed by western blot with 14685-1-AP (PAK4 antibody) at dilution of 1:800 incubated at room temperature for 1.5 hours.



Immunofluorescent analysis of HeLa cells, using PAK4 antibody 14685-1-AP at 1:25 dilution and Rhodamine-labeled goat anti-rabbit IgG (red).



IP Result of anti-PAK4 (IP:14685-1-AP, 4ug; Detection:14685-1-AP 1:800) with mouse liver tissue lysate 4000ug.



$1 \times 10^6$  HeLa cells were stained with 0.2ug PAK4 antibody (14685-1-AP, red) and control antibody (blue). Fixed with 90% MeOH blocked with 3% BSA (30 min). Alexa Fluor 488-conjugated AffiniPure Goat Anti-Rabbit IgG(H+L) with dilution 1:1000.