

À des fins de recherche uniquement

Anticorps Polyclonal de lapin anti-NKRF



Numéro de catalogue: 14693-1-AP

Phare

2 Publications

Informations de base

Numéro de catalogue:

14693-1-AP

Taille:

150ul, Concentration: 450 µg/ml by Nanodrop and 267 µg/ml by Bradford method using BSA as the standard;

Hôte:

Lapin

Isotype:

IgG

Immunogen Catalog Number:

AG6252

Numéro d'acquisition GenBank:

BC068514

Identification du gène (NCBI):

55922

Nom complet:

NFKB repressing factor

MW calculé

78 kDa

MW observés:

100 kDa

Méthode de purification:

Purification par affinité contre l'antigène

Dilutions recommandées:

WB 1:5000-1:50000

IP 0.5-4.0 ug for IP and 1:5000-1:50000 for WB

Applications

Applications testées:

IP, WB, ELISA

Demandes citées:

WB

Spécificité de l'espèce:

Humain, rat, souris

Espèces citées:

Humain, souris

Contrôles positifs:

WB : cellules HeLa, cellules HEK-293, cellules HepG2, cellules Jurkat

IP : cellules HeLa,

Informations générales

NKRF, also named as Protein ITBA4 or Transcription factor NRF, is a 690 amino acid protein, which contains one G-patch domain and one R3H domain. NKRF is widely and constitutively expressed, with lower level in colon, peripheral blood lymphocytes, lung and kidney. NKRF interacts with a specific negative regulatory element (NRE) 5'-AATTCCTCTGA-3' to mediate transcriptional repression of certain NK-kappa-B responsive genes. NKRF is involved in the constitutive silencing of the IFN-β promoter, independently of the virus-induced signals, and in the inhibition of the basal and cytokine-induced iNOS promoter activity.

Publications notables

Autrice	Pubmed ID	Journal	Application
Xi Jin	32393270	Mol Cancer	WB
Huang Lisong L	23808420	Immunology	WB

Stockage

Stockage:

Stocker à -20°C. Stable pendant un an après l'expédition.

Tampon de stockage:

PBS avec azoture de sodium à 0,02 % et glycérol à 50 % pH 7,3

L'aliquotage n'est pas nécessaire pour le stockage à -20C

*** Les 20ul contiennent 0,1% de BSA.

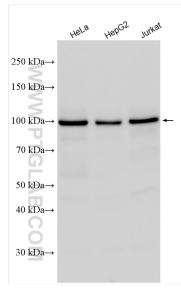
For technical support and original validation data for this product please contact:

T: 1 (888) 4PTGLAB (1-888-478-4522) (toll free in USA), or 1(312) 455-8498 (outside USA)

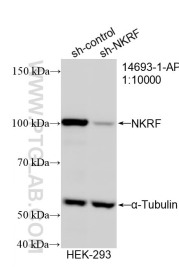
E: proteintech@ptglab.com
W: ptglab.com

This product is exclusively available under Proteintech Group brand and is not available to purchase from any other manufacturer.

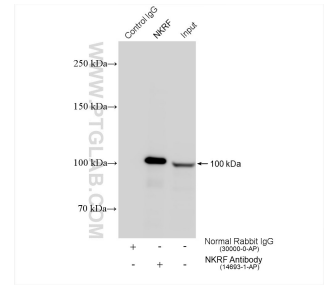
Données de validation sélectionnées



Various lysates were subjected to SDS PAGE followed by western blot with 14693-1-AP (NKRF antibody) at dilution of 1:15000 incubated at room temperature for 1.5 hours.



WB result of NKRF antibody (14693-1-AP; 1:10000; incubated at room temperature for 1.5 hours) with sh-Control and sh-NKRF transfected HEK-293 cells.



IP result of anti-NKRF(IP:14693-1-AP, 4ug; Detection:14693-1-AP 1:10000) with HeLa cells lysate 840 ug.