

À des fins de recherche uniquement

Anticorps Polyclonal de lapin anti-Collagen Type I



Numéro de catalogue: 14695-1-AP

671 Publications

Informations de base

Numéro de catalogue:	14695-1-AP	Numéro d'acquisition GenBank:	BC054498	Méthode de purification:	Purification par affinité contre l'antigène
Taille:	150ul, Concentration: 500 µg/ml by Nanodrop;	Identification du gène (NCBI):	1278	Dilutions recommandées:	WB 1:1000-1:4000 IHC 1:500-1:2000
Hôte:	Lapin	Nom complet:	collagen, type I, alpha 2		
Isotype:	IgG	MW calculé:	1366 aa, 130 kDa		
Immunogen Catalog Number:	AG6281	MW observés:	120-130 kDa		

Applications

Applications testées:
FC, IHC, WB, ELISA

Demandes citées:
FC, IF, IHC, IP, WB

Spécificité de l'espèce:
Humain, porc

Espèces citées:
bovin, canin, Humain, Lapin, porc, rat, souris

Remarque-IHC: il est suggéré de démasquer l'antigène avec un tampon de TE buffer pH 9,0; (*) À défaut, le démasquage de l'antigène peut être effectué avec un tampon citrate pH 6,0.

Contrôles positifs:

WB : tissu cutané de porc, tissu placentaire humain

IHC : tissu de cancer de la peau humain, tissu de cancer de l'œsophage humain, tissu de côlon humain

Informations générales

Type I collagen, the major structural component of connective tissues such as skin, tendon and bone, is the most abundant and widely expressed collagen in humans (PMID: 7620364; 8645190; 9016532). Type I collagen is a heterotrimer comprising one alpha 2(I) and two alpha 1(I) chains which are encoded by the unlinked loci COL1A2 and COL1A1 respectively. Type I collagen has a molecular mass of about 250-300 kDa, while the alpha 2(I) chain has a molecular weight of about 100-140 kDa. Mutations in COL1A2 gene are associated with osteogenesis imperfecta, Ehlers-Danlos syndrome, idiopathic osteoporosis, and atypical Marfan syndrome. This antibody raised against 1017-1366 aa of human pro-alpha 2 chain of type I collagen can recognize collagen alpha 2(1) chain and C-terminal propeptide of pro-alpha 2(1) chain.

Publications notables

Autrice	Pubmed ID	Journal	Application
Lishu Feng	27689865	Angle Orthod	WB
Chen Chen	36212944	Evid Based Complement Alternat Med	IF
Kun Zhao	36167556	Biol Direct	WB

Stockage

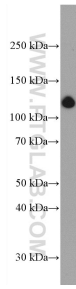
Stockage:
Stocker à -20°C. Stable pendant un an après l'expédition.
Tampon de stockage:
PBS avec azoture de sodium à 0,02 % et glycérol à 50 % pH 7,3
L'aliquoteur n'est pas nécessaire pour le stockage à -20C

*** Les 20ul contiennent 0,1% de BSA.

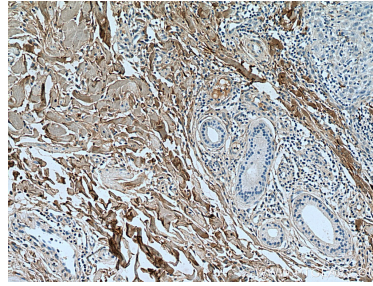
For technical support and original validation data for this product please contact:
T: 1 (888) 4PTGLAB (1-888-478-4522) (toll free in USA), or 1(312) 455-8498 (outside USA)
E: proteintech@ptglab.com
W: ptglab.com

This product is exclusively available under Proteintech Group brand and is not available to purchase from any other manufacturer.

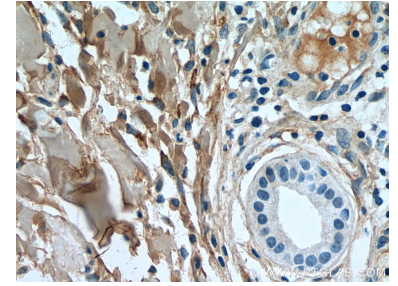
Données de validation sélectionnées



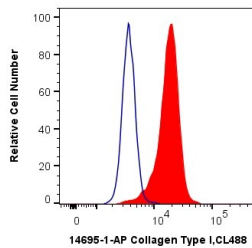
pig skin tissue were subjected to SDS PAGE followed by western blot with 14695-1-AP (Collagen Type I antibody) at dilution of 1:2000 incubated at room temperature for 1.5 hours.



Immunohistochemical analysis of paraffin-embedded human skin cancer tissue slide using 14695-1-AP (Collagen Type I antibody) at dilution of 1:1000 (under 10x lens). Heat mediated antigen retrieval with Tris-EDTA buffer (pH 9.0).



Immunohistochemical analysis of paraffin-embedded human skin cancer tissue slide using 14695-1-AP (Collagen Type I antibody) at dilution of 1:1000 (under 40x lens). Heat mediated antigen retrieval with Tris-EDTA buffer (pH 9.0).



1X10⁶ SW480 cells were intracellularly stained with 0.4 ug Anti-Human Collagen Type I (14695-1-AP) and CoraLite®488-Conjugated AffiniPure Goat Anti-Rabbit IgG(H+L) at dilution 1:1000 (red), or 0.4 ug Control Antibody. Cells were fixed with 4% PFA and permeabilized with Flow Cytometry Perm Buffer (PF00011-C).