

À des fins de recherche uniquement

# Anticorps Polyclonal de lapin anti-GRP94



Numéro de catalogue: 14700-1-AP

Phare

33 Publications

## Informations de base

Numéro de catalogue:  
14700-1-AP

Taille:  
150ul, Concentration: 400 µg/ml by Nanodrop and 240 µg/ml by Bradford method using BSA as the standard;

Hôte:  
Lapin

Isotype:  
IgG

Immunogen Catalog Number:  
AG6344

Numéro d'acquisition GenBank:  
BC066656

Identification du gène (NCBI):  
7184  
Nom complet:  
heat shock protein 90kDa beta (Grp94), member 1

MW calculé:  
92 kDa

MW observés:  
100 kDa

Méthode de purification:  
Purification par affinité contre l'antigène

Dilutions recommandées:  
WB 1:2000-1:16000  
IP 0.5-4.0 ug for IP and 1:1000-1:4000 for WB  
IHC 1:20-1:200  
IF 1:200-1:800

## Applications

Applications testées:  
FC, IF, IHC, IP, WB, ELISA

Demandes citées:  
CoIP, FC, IF, IHC, WB

Spécificité de l'espèce:  
Humain, rat, souris

Espèces citées:  
Humain, rat, souris

**Remarque-IHC: il est suggéré de démasquer l'antigène avec un tampon de TE buffer pH 9,0; (\*) A défaut, 'le démasquage de l'antigène peut être 'effectué avec un tampon citrate pH 6,0.**

Contrôles positifs:

WB : cellules A431, cellules A549, cellules HEK-293, cellules HeLa, cellules HepG2, cellules MCF-7, cellules U2OS

IP : tissu hépatique de souris,

IHC : tissu de cancer du sein humain, tissu de cancer du col de l'utérus humain

IF : cellules HeLa, cellules A431, cellules HepG2

## Informations générales

HSP90 proteins are highly conserved molecular chaperones, which normally associate with other cochaperones and play important roles in folding newly synthesized proteins or stabilizing and refolding denatured proteins after stress. HSP90B1 (GP96 or GRP94) is an endoplasmic reticulum paralogue of the cytosolic HSP90. As a major ER chaperone to mediate the UPR and a master chaperone for Toll-like receptors (TLRs), HSP90b1 chaperones peptides to MHC class I molecules of dendritic cells and other antigen-presenting cells, as well as facilitating the assembly of immunoglobulin. The protein is also involved in many other bio-processes. This antibody was generated against the C-terminal region of full-length HSP90b1.

## Publications notables

Autrice	Pubmed ID	Journal	Application
Na Liu	32961227	Life Sci	WB
Piaopiao Wen	36139350	Cells	WB
Chang Feng	30445054	Toxicology	

## Stockage

Stockage:

Stocker à -20°C. Stable pendant un an après l'expédition.

Tampon de stockage:

PBS avec azoture de sodium à 0,02 % et glycérol à 50 % pH 7,3

L'aliquoteage n'est pas nécessaire pour le stockage à -20C

\*\*\* Les 20ul contiennent 0,1% de BSA.

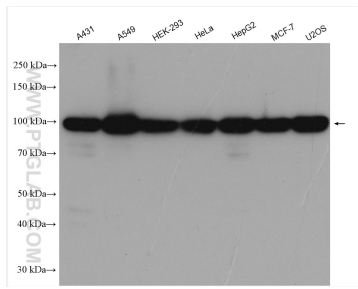
For technical support and original validation data for this product please contact:

T: 1 (888) 4PTGLAB (1-888-478-4522) (toll free in USA), or 1(312) 455-8498 (outside USA)

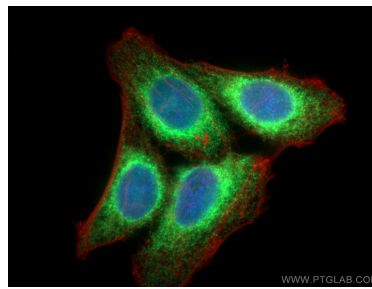
E: proteintech@ptglab.com  
W: ptglab.com

This product is exclusively available under Proteintech Group brand and is not available to purchase from any other manufacturer.

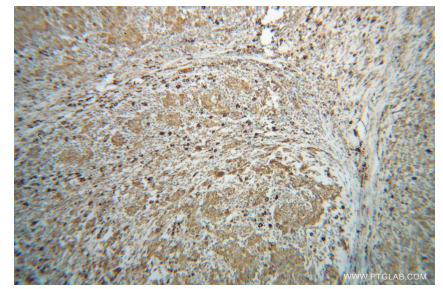
# Données de validation sélectionnées



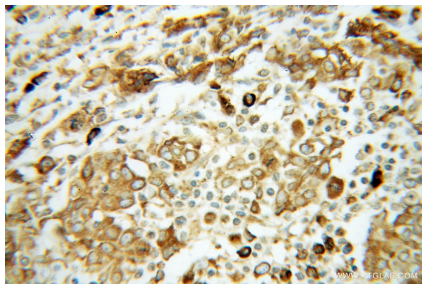
Various lysates were subjected to SDS PAGE followed by western blot with 14700-1-AP (GRP94 antibody) at dilution of 1:8000 incubated at room temperature for 1.5 hours.



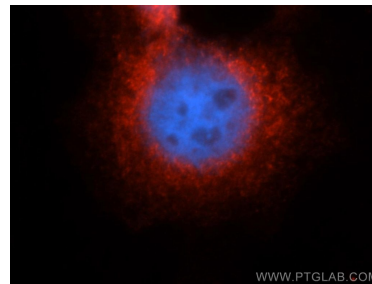
Immunofluorescent analysis of (4% PFA) fixed HepG2 cells using GRP94 antibody (14700-1-AP) at dilution of 1:200 and CoraLite®488-Conjugated AffiniPure Goat Anti-Rabbit IgG(H+L), CL594-Phalloidin (red).



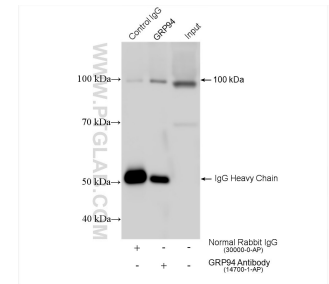
Immunohistochemical analysis of paraffin-embedded human breast cancer using 14700-1-AP (HSP90B1 antibody) at dilution of 1:100 (under 10x lens).



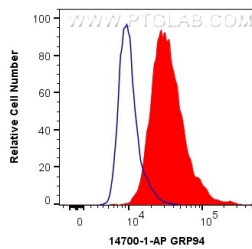
Immunohistochemical analysis of paraffin-embedded human breast cancer using 14700-1-AP (HSP90B1 antibody) at dilution of 1:100 (under 40x lens).



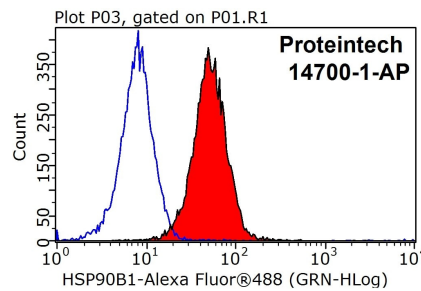
Immunofluorescent analysis of A431 cells, using HSP90B1 antibody 14700-1-AP at 1:50 dilution and Rhodamine-labeled goat anti-rabbit IgG (red). Blue pseudocolor = DAPI (fluorescent DNA dye).



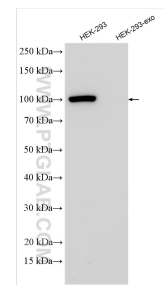
IP result of anti-GRP94(IP:14700-1-AP, 4ug; Detection:14700-1-AP 1:2000) with mouse liver tissue lysate 1560 ug.



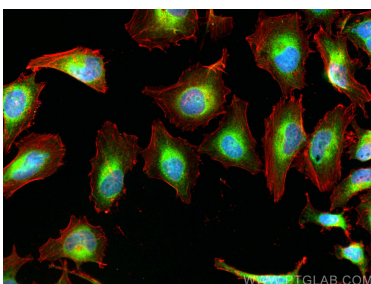
1X10<sup>6</sup> HeLa cells were intracellularly stained with 0.4 ug Anti-Human GRP94 (14700-1-AP) and CoraLite®488-Conjugated AffiniPure Goat Anti-Rabbit IgG(H+L) at dilution 1:1000 (red), or 0.4 ug Control Antibody. Cells were fixed with 4% PFA and permeabilized with Flow Cytometry Perm Buffer (PF00011-C).



1X10<sup>6</sup> HEK-293T cells were stained with .2ug GRP94 antibody (14700-1-AP, red) and control antibody (blue). Fixed with 90% MeOH blocked with 3% BSA (30 min). Alexa Fluor 488-conjugated AffiniPure Goat Anti-Rabbit IgG(H+L) with dilution 1:1000.



HEK-293 cells and HEK-293-derived exosomes (HEK-293-exo) were subjected to SDS PAGE followed by western blot with 14700-1-AP (GRP94 antibody) at dilution of 1:10000 incubated at room temperature for 1.5 hours.



Immunofluorescent analysis of (4% PFA) fixed HeLa cells using GRP94 antibody (14700-1-AP) at dilution of 1:400 and CoraLite®488-Conjugated AffiniPure Goat Anti-Rabbit IgG(H+L), CL594-Phalloidin (red).