

À des fins de recherche uniquement

# Anticorps Polyclonal de lapin anti-SEC6



Numéro de catalogue: 14703-1-AP

Phare

3 Publications

## Informations de base

Numéro de catalogue:  
14703-1-AP

Taille:  
150ul, Concentration: 400 µg/ml by Nanodrop and 133 µg/ml by Bradford method using BSA as the standard;

Hôte:  
Lapin

Isotype:  
IgG

Immunogen Catalog Number:  
AG6383

Numéro d'acquisition GenBank:  
BC064569

Identification du gène (NCBI):  
11336  
Nom complet:  
exocyst complex component 3

MW calculé  
87 kDa

MW observés:  
86 kDa

Méthode de purification:  
Purification par affinité contre l'antigène

Dilutions recommandées:  
WB 1:500-1:2400  
IHC 1:50-1:500  
IF 1:20-1:200

## Applications

Applications testées:  
IF, IHC, WB, ELISA

Demandes citées:  
WB

Spécificité de l'espèce:  
Humain, rat, souris

Espèces citées:  
Humain, rat

**Remarque-IHC: il est suggéré de démasquer l'antigène avec un tampon de TE buffer pH 9,0; (\*) A défaut, le démasquage de l'antigène peut être effectué avec un tampon citrate pH 6,0.**

Contrôles positifs:

WB : tissu cérébral humain, cellules COLO 320, cellules HeLa, cellules HepG2

IHC : tissu de gliome humain,

IF : cellules HepG2,

## Informations générales

Exoc3 (Sec6) is a component of the exocyst (Sec6/8) complex involved in vesicle trafficking at neural synapses and vesicle targeting in polarized epithelial cells. Though best characterized in yeast, the component proteins and functions of exocyst complex have been demonstrated to be highly conserved in higher eukaryotes. This complex is composed of eight proteins (Sec3, Sec5, Sec6, Sec8, Sec10, and Sec15, Exo70 and Exo84), with molecular weights ranging from 70 to 144 kDa.

## Publications notables

Autrice	Pubmed ID	Journal	Application
Hiroki Takeuchi	26617273	Cell Microbiol	WB
Youssef G G	23685254	Dev Biol	WB
Takeuchi Hiroki H	21155963	Cell Microbiol	WB

## Stockage

Stockage:

Stocker à -20°C. Stable pendant un an après l'expédition.

Tampon de stockage:

PBS avec azoture de sodium à 0,02 % et glycérol à 50 % pH 7,3

L'aliquotage n'est pas nécessaire pour le stockage à -20C

\*\*\* Les 20ul contiennent 0,1% de BSA.

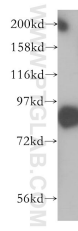
For technical support and original validation data for this product please contact:

T: 1 (888) 4PTGLAB (1-888-478-4522) (toll free in USA), or 1(312) 455-8498 (outside USA)

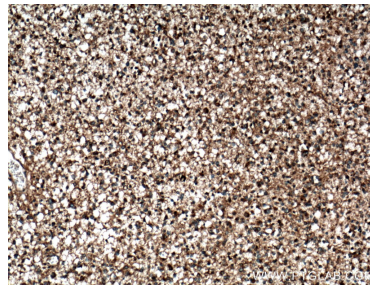
E: proteintech@ptglab.com  
W: ptglab.com

This product is exclusively available under Proteintech Group brand and is not available to purchase from any other manufacturer.

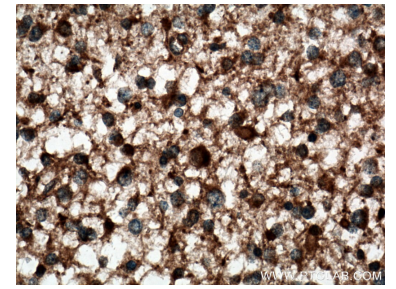
## Données de validation sélectionnées



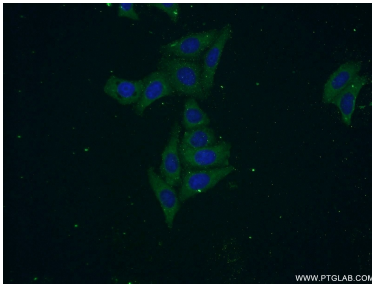
human brain tissue were subjected to SDS PAGE followed by western blot with 14703-1-AP (SEC6 antibody) at dilution of 1:86 incubated at room temperature for 1.5 hours.



Immunohistochemical analysis of paraffin-embedded human gliomas tissue slide using 14703-1-AP (SEC6 antibody) at dilution of 1:200 (under 10x lens. Heat mediated antigen retrieval with Tris-EDTA buffer (pH 9.0).



Immunohistochemical analysis of paraffin-embedded human gliomas tissue slide using 14703-1-AP (SEC6 antibody) at dilution of 1:200 (under 40x lens. Heat mediated antigen retrieval with Tris-EDTA buffer (pH 9.0).



Immunofluorescent analysis of HepG2 cells using 14703-1-AP (SEC6 antibody) at dilution of 1:50 and Alexa Fluor 488-conjugated AffiniPure Goat Anti-Rabbit IgG(H+L).