

À des fins de recherche uniquement

Anticorps Polyclonal de lapin anti-PCP4



Numéro de catalogue: 14705-1-AP

6 Publications

Informations de base

Numéro de catalogue:

14705-1-AP

Taille:

150ul, Concentration: 700 µg/ml by Nanodrop;

Hôte:

Lapin

Isotype:

IgG

Immunogen Catalog Number:

AG6388

Numéro d'acquisition GenBank:

BC013791

Identification du gène (NCBI):

5121

Nom complet:

Purkinje cell protein 4

MW calculé

7 kDa

MW observés:

8 kDa

Méthode de purification:

Purification par affinité contre l'antigène

Dilutions recommandées:

WB 1:1000-1:6000

IP 0.5-4.0 ug for IP and 1:500-1:2000 for WB

IHC 1:50-1:500

Applications

Applications testées:

IHC, IP, WB, ELISA

Demandes citées:

IF, IHC, WB

Spécificité de l'espèce:

Humain, rat, souris

Espèces citées:

Humain, rat

Contrôles positifs:

WB : tissu cérébral de souris, cerveau de rat

IP : tissu cérébral de souris,

IHC : tissu de cervelet humain, tissu cérébral de souris, tissu de cervelet de souris

Remarque-IHC: il est suggéré de démasquer l'antigène avec un tampon de TE buffer pH 9,0; (*) À défaut, le démasquage de l'antigène peut être effectué avec un tampon citrate pH 6,0.

Informations générales

PCP4, also named as PEP19, belongs to a family of proteins involved in calcium transduction signals and binds calmodulin via an IQ motif, in a calcium independent manner. It is mainly expressed in ectoderm and neuroectoderm comprising neural crest derived cells.

Publications notables

Autrice	Pubmed ID	Journal	Application
Rui Dong	32946775	Cancer Cell	IF
Jimena Monzón-Sandoval	32167609	Ann Neurol	WB
Heydar Davoudi	30664772	Nat Neurosci	IF

Stockage

Stockage:

Stocker à -20°C. Stable pendant un an après l'expédition.

Tampon de stockage:

PBS avec azoture de sodium à 0,02 % et glycérol à 50 % pH 7,3

L'aliquotage n'est pas nécessaire pour le stockage à -20C

*** Les 20ul contiennent 0,1% de BSA.

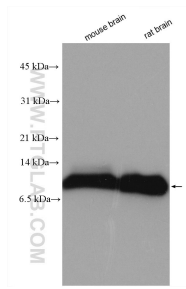
For technical support and original validation data for this product please contact:

T: 1 (888) 4PTGLAB (1-888-478-4522) (toll free in USA), or 1(312) 455-8498 (outside USA)

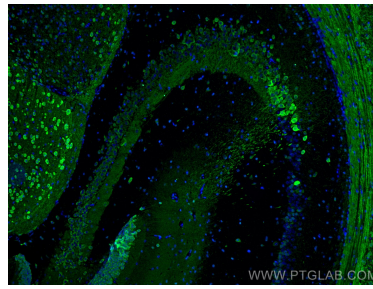
E: proteintech@ptglab.com
W: ptglab.com

This product is exclusively available under Proteintech Group brand and is not available to purchase from any other manufacturer.

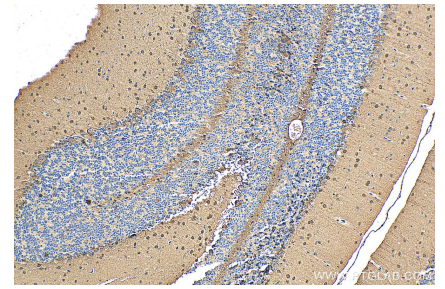
Données de validation sélectionnées



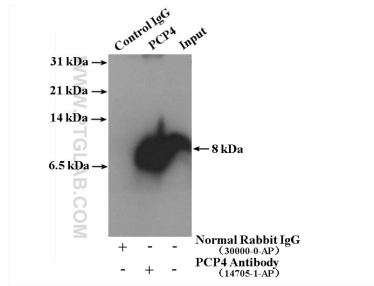
Various lysates were subjected to SDS PAGE followed by western blot with 14705-1-AP (PCP4 antibody) at dilution of 1:3000 incubated at room temperature for 1.5 hours.



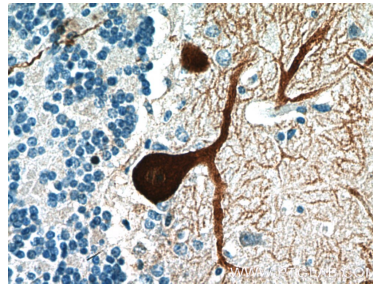
Immunofluorescent analysis of (4% PFA) fixed mouse brain tissue using PCP4 antibody (14705-1-AP) at dilution of 1:200 and CoraLite® 488-Conjugated AffiniPure Goat Anti-Rabbit IgG(H+L).



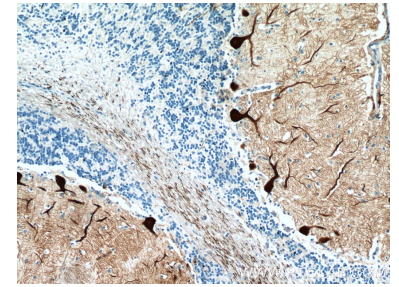
Immunohistochemical analysis of paraffin-embedded mouse cerebellum tissue slide using 14705-1-AP (PCP4 antibody) at dilution of 1:200 (under 10x lens). Heat mediated antigen retrieval with Tris-EDTA buffer (pH 9.0).



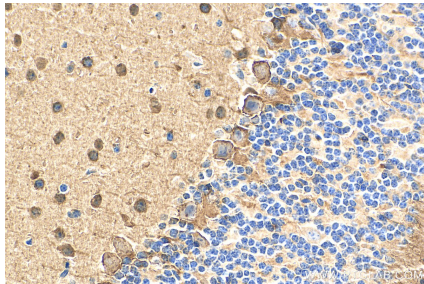
IP result of anti-PCP4 (IP:14705-1-AP, 4ug; Detection:14705-1-AP 1:1000) with mouse brain tissue lysate 4000 ug.



Immunohistochemical analysis of paraffin-embedded human cerebellum tissue slide using 14705-1-AP (PCP4 Antibody) at dilution of 1:200 (under 40x lens).



Immunohistochemical analysis of paraffin-embedded human cerebellum tissue slide using 14705-1-AP (PCP4 Antibody) at dilution of 1:200 (under 10x lens).



Immunohistochemical analysis of paraffin-embedded mouse cerebellum tissue slide using 14705-1-AP (PCP4 antibody) at dilution of 1:200 (under 40x lens). Heat mediated antigen retrieval with Tris-EDTA buffer (pH 9.0).