

À des fins de recherche uniquement

Anticorps Polyclonal de lapin anti-ERp72



Numéro de catalogue: 14712-1-AP

Phare

30 Publications

Informations de base

Numéro de catalogue:

14712-1-AP

Taille:

150ul, Concentration: 650 µg/ml by Nanodrop and 220 µg/ml by Bradford method using BSA as the standard;

Hôte:

Lapin

Isotype:

IgG

Immunogen Catalog Number:

AG6431

Numéro d'acquisition GenBank:

BC000425

Identification du gène (NCBI):

9601

Nom complet:

protein disulfide isomerase family A, member 4

MW calculé

73 kDa

MW observés:

72 kDa

Méthode de purification:

Purification par affinité contre l'antigène

Dilutions recommandées:

WB 1:2000-1:10000

IP 0.5-4.0 ug for IP and 1:500-1:1000 for WB

IHC 1:500-1:2000

IF 1:20-1:200

Applications

Applications testées:

FC, IF, IHC, IP, WB, ELISA

Demandes citées:

CoIP, IF, IHC, WB

Spécificité de l'espèce:

Humain, rat, souris

Espèces citées:

Humain, porc, singe, souris

Remarque-IHC: il est suggéré de démasquer l'antigène avec un tampon de TE buffer pH 9,0; (*) A défaut, 'le démasquage de l'antigène peut être 'effectué avec un tampon citrate pH 6,0.

Contrôles positifs:

WB : tissu cérébral de souris, cellules HeLa, cellules HepG2, cellules LO2, tissu hépatique de rat, tissu hépatique de souris

IP : cellules HeLa,

IHC : tissu de cancer du foie humain, tissu de cancer de la prostate humain

IF : cellules PC-3,

Informations générales

PDIA4 (Protein disulfide-isomerase A4) is also named as ERP70, ERP72 and belongs to the protein disulfide isomerase family. It catalyzes the rearrangement of -S-S- bonds in proteins. ERp72 is a soluble protein localized in the ER lumen and contains the COOH-terminal retention signal, KEEL. There are 6 cysteine residues in the amino acid sequences of mouse and human ERp72. All of the cysteine residues occur in the internal thioredoxin motif, CGHC (PMID:15475357). The full length protein has a signal peptide with 20 amino acid.

Publications notables

Autrice	Pubmed ID	Journal	Application
Shifeng Tong	36181861	Cryobiology	IF
Feng Xing	36082822	Oncol Rep	IHC, WB
Nirav Florian Chhabra	34487921	Mol Metab	WB

Stockage

Stockage:

Stocker à -20°C. Stable pendant un an après l'expédition.

Tampon de stockage:

PBS avec azoture de sodium à 0,02 % et glycérol à 50 % pH 7,3

L'aliquotage n'est pas nécessaire pour le stockage à -20C

*** Les 20ul contiennent 0,1% de BSA.

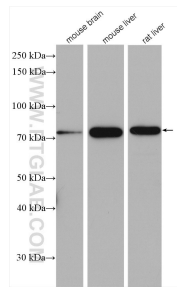
For technical support and original validation data for this product please contact:

T: 1 (888) 4PTGLAB (1-888-478-4522) (toll free in USA), or 1(312) 455-8498 (outside USA)

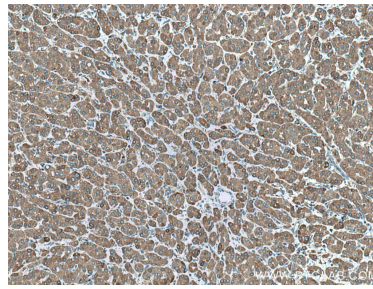
E: proteintech@ptglab.com
W: ptglab.com

This product is exclusively available under Proteintech Group brand and is not available to purchase from any other manufacturer.

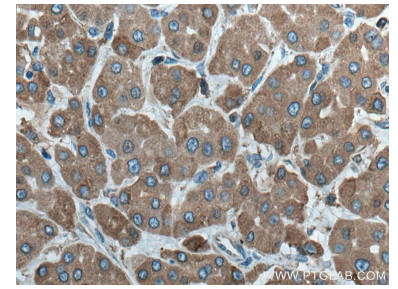
Données de validation sélectionnées



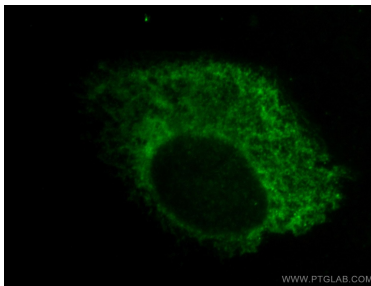
Various lysates were subjected to SDS PAGE followed by western blot with 14712-1-AP (ERp72 antibody) at dilution of 1:5000 incubated at room temperature for 1.5 hours.



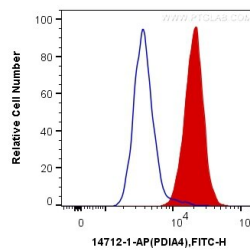
Immunohistochemical analysis of paraffin-embedded human liver cancer tissue slide using 14712-1-AP (ERp72 antibody) at dilution of 1:1000 (under 10x lens). Heat mediated antigen retrieval with Tris-EDTA buffer (pH 9.0).



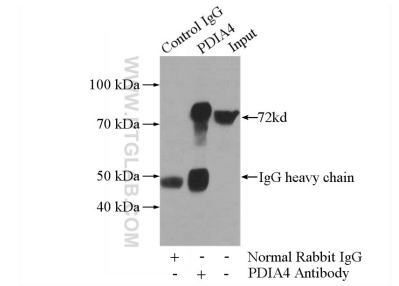
Immunohistochemical analysis of paraffin-embedded human liver cancer tissue slide using 14712-1-AP (ERp72 antibody) at dilution of 1:1000 (under 40x lens). Heat mediated antigen retrieval with Tris-EDTA buffer (pH 9.0).



Immunofluorescent analysis of PC-3 cells, using PDIA4 antibody 14712-1-AP at 1:50 dilution and FITC-labeled donkey anti-rabbit IgG (green).



1×10^6 HepG2 cells were intracellularly stained with 0.4 ug Anti-Human ERp72 (14712-1-AP) and CoraLite®488-Conjugated AffiniPure Goat Anti-Rabbit IgG(H+L) at dilution 1:1000 (red), or 0.4 ug Control Antibody. Cells were fixed with 4% PFA and permeabilized with Flow Cytometry Perm Buffer (PF00011-C).



IP Result of anti-ERp72 (IP:14712-1-AP, 4ug; Detection:14712-1-AP 1:500) with HeLa cells lysate 2800ug.