

À des fins de recherche uniquement

# Anticorps Polyclonal de lapin anti-KLF6



Numéro de catalogue: 14716-1-AP

12 Publications

## Informations de base

Numéro de catalogue: 14716-1-AP	Numéro d'acquisition GenBank: BC000311	Méthode de purification: Purification par affinité contre l'antigène
Taille: 150ul , Concentration: 350 µg/ml by Nanodrop;	Identification du gène (NCBI): 1316	Dilutions recommandées: WB 1:1000-1:5000 IHC 1:20-1:200
Hôte: Lapin	Nom complet: Kruppel-like factor 6	
Isotype: IgG	MW calculé: 32 kDa	
Immunogen Catalog Number: AG6440	MW observés: 32-42 kDa	

## Applications

### Applications testées:

IHC, WB, ELISA

### Demandes citées:

IF, IHC, WB

### Spécificité de l'espèce:

Humain, rat, souris

### Espèces citées:

Humain, rat, souris

### Contrôles positifs:

WB : cellules HEK-293, cellules HUVEC, cellules NCI-H1299, tissu de côlon de souris, tissu de thymus de souris

IHC : tissu testiculaire humain,

**Remarque-IHC: il est suggéré de démasquer l'antigène avec un tampon de TE buffer pH 9,0; (\*) À défaut, 'le démasquage de l'antigène peut être 'effectué avec un tampon citrate pH 6,0.**

## Informations générales

KLF6(krupple-like factor 6) is a zinc finger transcription factor and tumor suppressor with biological activities and transcriptional targets in growing range. It is highly expressed in placenta followed by spleen, thymus, prostate, testis, small intestine and colon. One key target gene of KLF6 in endoglin, which is a homodimeric cell membrane glycoprotein and TGF-β auxiliary receptor, owns a pro-angiogenic role in endothelial cells and is also involved in malignant progression. Also KLF6 induces apoptosis in prostate cancer cells through upregulation of ATF3. KLF6 was normal detected as a 46kDa protein, which is larger than translation product(32kDa), because of post-translational modification including both phosphorylation and glycosylation. This antibody raise against the full length of KLF6 gene of human origin, and can recognize both of KLF6, included KLF6(~32kDa), p-KLF6(~35-46kDa). Otherwise, there may be a non-specific band(50kDa) showed in detection

## Publications notables

Autrice	Pubmed ID	Journal	Application
Yue Wang	27690088	Nutrients	WB
Ying Yang	31723124	Cell Death Dis	WB
Liang Cao	35706450	Front Genet	IF

## Stockage

### Stockage:

Stocker à -20°C. Stable pendant un an après l'expédition.

### Tampon de stockage:

PBS avec azoture de sodium à 0,02 % et glycérol à 50 % pH 7,3

L'aliquotage n'est pas nécessaire pour le stockage à -20C

\*\*\* Les 20ul contiennent 0,1% de BSA.

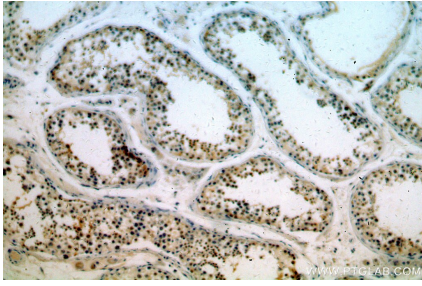
For technical support and original validation data for this product please contact:

T: 1 (888) 4PTGLAB (1-888-478-4522) (toll free in USA), or 1(312) 455-8498 (outside USA)

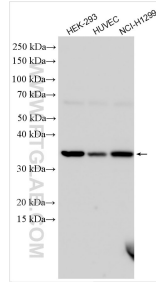
E: proteintech@ptglab.com  
W: ptglab.com

This product is exclusively available under Proteintech Group brand and is not available to purchase from any other manufacturer.

## Données de validation sélectionnées



Immunohistochemical analysis of paraffin-embedded human testis using 14716-1-AP (KLF6 antibody) at dilution of 1:200 (under 10x lens).



Various lysates were subjected to SDS PAGE followed by western blot with 14716-1-AP (KLF6 antibody) at dilution of 1:2500 incubated at room temperature for 1.5 hours.