

À des fins de recherche uniquement

Anticorps Polyclonal de lapin anti-UCHL1/PGP9.5



Numéro de catalogue: 14730-1-AP

Phare

90 Publications

Informations de base

Numéro de catalogue: 14730-1-AP	Numéro d'acquisition GenBank: BC000332	Méthode de purification: Purification par affinité contre l'antigène
Taille: 150ul, Concentration: 500 µg/ml by Nanodrop;	Identification du gène (NCBI): 7345	Dilutions recommandées: WB 1:5000-1:50000 IF 1:200-1:800
Hôte: Lapin	Nom complet: ubiquitin carboxyl-terminal esterase L1 (ubiquitin thiolesterase)	
Isotype: IgG	MW calculé: 25 kDa	
Immunogen Catalog Number: AG6490	MW observés: 27 kDa	

Applications

Applications testées:

FC, IF, WB, ELISA

Demandes citées:

CoIP, ELISA, IF, IHC, WB

Spécificité de l'espèce:

Humain, rat, souris

Espèces citées:

Humain, porc, rat, singe, souris, primate non humain

Contrôles positifs:

WB : cellules A549, cellules C6, cellules NCI-H1299, cellules Neuro-2a, cellules SH-SY5Y, tissu cérébral de rat, tissu cérébral de souris

IF : cellules A549, tissu cérébral de souris

Informations générales

UCHL1(Ubiquitin carboxyl-terminal hydrolase isozyme L1) is a member of a gene family whose products hydrolyze small C-terminal adducts of ubiquitin to generate the ubiquitin monomer. Expression of UCHL1 is highly specific to neurons and to cells of the diffuse neuroendocrine system and their tumors. It is present in all neurons(PMID: 6343558). This protein is present in brain at concentrations at least 50 times greater than in other organs and is a major protein component of neuronal cytoplasm (PMID:7217993). And UCHL1 is a Parkinson's disease susceptibility gene (PMID:15048890).

Publications notables

Autrice	Pubmed ID	Journal	Application
Wisam Toma	36096180	Exp Neurol	IHC
Matthew Bratkowski	36087583	Neuron	IF
Haochen Jiang	28918935	Cell Metab	WB,IF

Stockage

Stockage:

Stocker à -20°C. Stable pendant un an après l'expédition.

Tampon de stockage:

PBS avec azoture de sodium à 0,02 % et glycérol à 50 % pH 7,3

L'aliquotage n'est pas nécessaire pour le stockage à -20C

*** Les 20ul contiennent 0,1% de BSA.

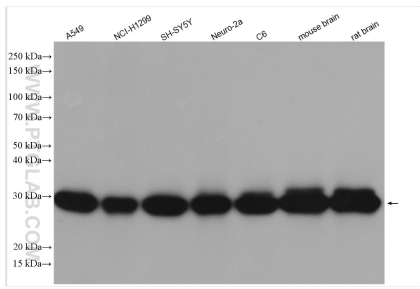
For technical support and original validation data for this product please contact:

T: 1 (888) 4PTGLAB (1-888-478-4522) (toll free in USA), or 1(312) 455-8498 (outside USA)

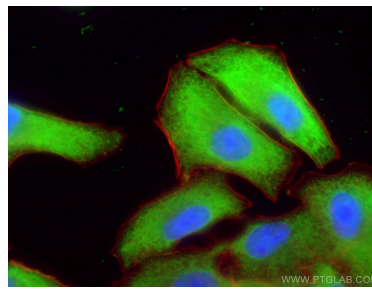
E: proteintech@ptglab.com
W: ptglab.com

This product is exclusively available under Proteintech Group brand and is not available to purchase from any other manufacturer.

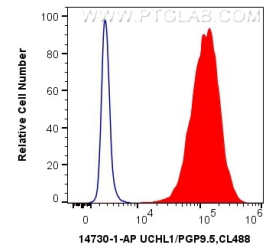
Données de validation sélectionnées



Various lysates were subjected to SDS PAGE followed by western blot with 14730-1-AP (UCHL1/PGP9.5 antibody) at dilution of 1:20000 incubated at room temperature for 1.5 hours.



Immunofluorescent analysis of (-20°C Ethanol) fixed A549 cells using UCHL1/PGP9.5 antibody (14730-1-AP) at dilution of 1:400 and CoraLite@488-Conjugated AffiniPure Goat Anti-Rabbit IgG(H+L).



1X10⁶ C6 cells were intracellularly stained with 0.4 ug Anti-Human UCHL1/PGP9.5 (14730-1-AP) and CoraLite@488-Conjugated AffiniPure Goat Anti-Rabbit IgG(H+L) at dilution 1:1000 (red), or 0.4 ug Control Antibody. Cells were fixed with 4% PFA and permeabilized with Flow Cytometry Perm Buffer (PF00011-C).