

À des fins de recherche uniquement

Anticorps Polyclonal de lapin anti-UQCRC2



Numéro de catalogue: 14742-1-AP

Phare

54 Publications

Informations de base

Numéro de catalogue:

14742-1-AP

Taille:

150ul, Concentration: 800 µg/ml by Nanodrop;

Hôte:

Lapin

Isotype:

IgG

Immunogen Catalog Number:

AG6432

Numéro d'acquisition GenBank:

BC000484

Identification du gène (NCBI):

7385

Nom complet:

ubiquinol-cytochrome c reductase core protein II

MW calculé

48 kDa

MW observés:

48 kDa

Méthode de purification:

Purification par affinité contre l'antigène

Dilutions recommandées:

WB 1:2000-1:12000

IP 0.5-4.0 ug for IP and 1:500-1:2000 for WB

IHC 1:50-1:500

IF 1:50-1:500

Applications

Applications testées:

FC, IF, IHC, IP, WB, ELISA

Demandes citées:

IF, IHC, WB

Spécificité de l'espèce:

Humain, rat, souris

Espèces citées:

Humain, poisson-zèbre, rat, souris

Remarque-IHC: il est suggéré de démasquer l'antigène avec un tampon de TE buffer pH 9,0; (*) À défaut, le démasquage de l'antigène peut être effectué avec un tampon citrate pH 6,0.

Contrôles positifs:

WB : tissu cérébral de souris, cellules SGC-7901, échantillons divers, tissu cardiaque de rat, tissu cardiaque de souris, tissu de côlon de souris, tissu de côlon humain, tissu de muscle squelettique de souris, tissu placentaire de souris

IP : tissu cérébral de souris,

IHC : tissu de cancer du côlon humain,

IF : cellules HepG2,

Informations générales

UQCRC2(Ubiquinol-cytochrome-c reductase complex core protein 2) is also named as complex III subunit 2, core protein II and belongs to the UQCRC2/QCR2 subfamily. The bc1 complex contains 11 subunits: 3 respiratory subunits (cytochrome b, cytochrome c1 and Rieske/UQCRF51), 2 core proteins (UQCRC1/QCR1 and UQCRC2/QCR2) and 6 low-molecular weight proteins (UQCRH/QCR6, UQCRB/QCR7, UQCRQ/QCR8, UQCR10/QCR9, UQCR11/QCR10 and a cleavage product of Rieske/UQCRF51) and is part of the mitochondrial respiratory chain. This protein distributes in mitochondrion inner membrane, peripheral membrane protein and matrix side.

Publications notables

Autrice	Pubmed ID	Journal	Application
Giulia Notarangelo	36173860	Science	WB
Wen-Kuan Huang	34638938	Int J Mol Sci	WB
Lei Wu	33129969	J Nutr Biochem	WB

Stockage

Stockage:

Stocker à -20°C. Stable pendant un an après l'expédition.

Tampon de stockage:

PBS avec azoture de sodium à 0,02 % et glycérol à 50 % pH 7,3

L'aliquotage n'est pas nécessaire pour le stockage à -20C

*** Les 20ul contiennent 0,1% de BSA.

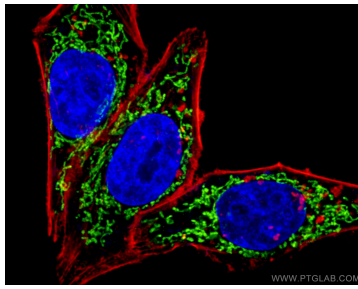
For technical support and original validation data for this product please contact:

T: 1 (888) 4PTGLAB (1-888-478-4522) (toll free in USA), or 1(312) 455-8498 (outside USA)

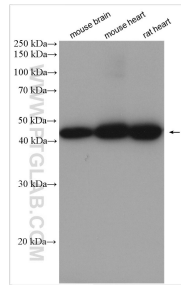
E: proteintech@ptglab.com
W: ptglab.com

This product is exclusively available under Proteintech Group brand and is not available to purchase from any other manufacturer.

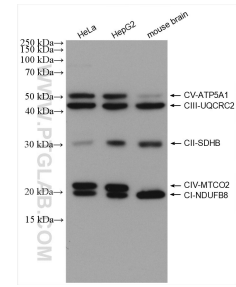
Données de validation sélectionnées



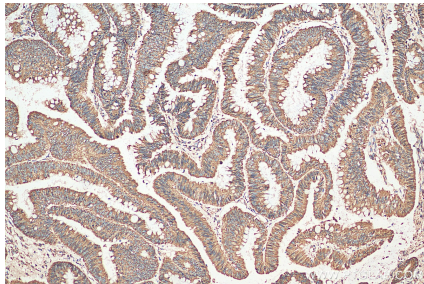
Immunofluorescent analysis of (4% PFA) fixed HepG2 cells using 14742-1-AP (UQCRC2 antibody) at dilution of 1:100 and CoraLite488-Conjugated AffiniPure Goat Anti-Rabbit IgG(H+L); Phalloidin stains F-actin (Red).



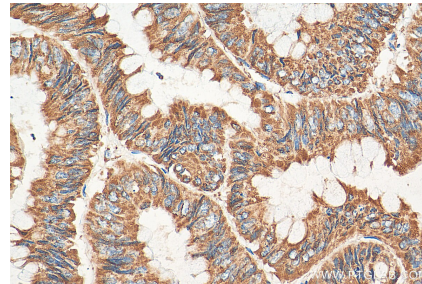
Various lysates were subjected to SDS PAGE followed by western blot with 14742-1-AP (UQCRC2 antibody) at dilution of 1:6000 incubated at room temperature for 1.5 hours.



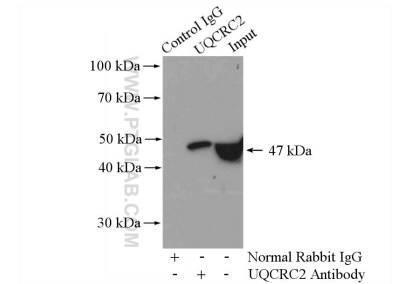
These five antibodies, ATP5A1 (14676-1-AP, 1:8000), UQCRC2 (14742-1-AP, 1:4000), SDHB (10620-1-AP, 1:8000), MTCO2 (55070-1-AP, 1:1000), NDUFB8 (14794-1-AP, 1:5000), can be assembled OXPHOS kit to detect the relative levels of the 5 OXPHOS complexes in mitochondrial preparations.



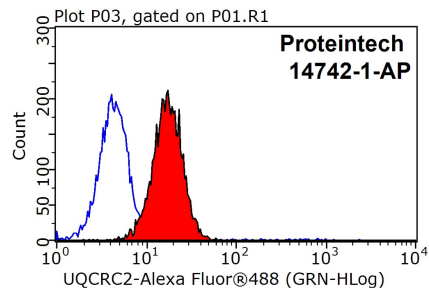
Immunohistochemical analysis of paraffin-embedded human colon cancer tissue slide using 14742-1-AP (UQCRC2 antibody) at dilution of 1:200 (under 10x lens). Heat mediated antigen retrieval with Tris-EDTA buffer (pH 9.0).



Immunohistochemical analysis of paraffin-embedded human colon cancer tissue slide using 14742-1-AP (UQCRC2 antibody) at dilution of 1:200 (under 40x lens). Heat mediated antigen retrieval with Tris-EDTA buffer (pH 9.0).



IP Result of anti-UQCRC2 (IP:14742-1-AP, 4ug; Detection:14742-1-AP 1:1000) with mouse brain tissue lysate 4000ug.



1X10⁶ HepG2 cells were stained with 0.2ug UQCRC2 antibody (14742-1-AP, red) and control antibody (blue). Fixed with 90% MeOH blocked with 3% BSA (30 min). Alexa Fluor 488-conjugated AffiniPure Goat Anti-Rabbit IgG(H+L) with dilution 1:1500.