

À des fins de recherche uniquement

Anticorps Polyclonal de lapin anti-ACVRL1



Numéro de catalogue: 14745-1-AP

5 Publications

Informations de base

Numéro de catalogue:

14745-1-AP

Taille:

150ul, Concentration: 300 µg/ml by Nanodrop;

Hôte:

Lapin

Isotype:

IgG

Immunogen Catalog Number:

AG6449

Numéro d'acquisition GenBank:

BC042637

Identification du gène (NCBI):

94

Nom complet:

activin A receptor type II-like 1

MW calculé

56 kDa

MW observés:

63 kDa

Méthode de purification:

Purification par affinité contre l'antigène

Dilutions recommandées:

WB 1:500-1:1000

IP 0.5-4.0 ug for IP and 1:200-1:1000 for WB

IHC 1:100-1:400

Applications

Applications testées:

FC, IHC, IP, WB, ELISA

Demandes citées:

FC, IHC, IP, WB

Spécificité de l'espèce:

Humain

Espèces citées:

Humain, souris

Contrôles positifs:

WB : tissu placentaire humain,

IP : cellules Jurkat,

IHC : tissu cardiaque humain, tissu de lymphome humain

Remarque-IHC: il est suggéré de démasquer l'antigène avec un tampon de TE buffer pH 9,0; (*) À défaut, le démasquage de l'antigène peut être effectué avec un tampon citrate pH 6,0.

Informations générales

ACVRL1 (also known as ALK1) is a type I cell-surface receptor for the TGF-beta superfamily of ligands. It shares with other type I receptors a high degree of similarity in serine-threonine kinase subdomains, a glycine- and serine-rich region (called the GS domain) preceding the kinase domain, and a short C-terminal tail. ACVRL1 is highly expressed in endothelial cells and has a critical role in the control of blood vessel development and repair (PMID: 8640225). Mutations in the ACVRL1 gene are associated with hemorrhagic telangiectasia type 2.

Publications notables

Autrice	Pubmed ID	Journal	Application
Yusuke Kimishima	34702814	Nat Commun	WB, FC
Houping Chen	33245175	Cell Biol Int	WB, IP
Yesheng Fu	34157307	Mol Cell	WB

Stockage

Stockage:

Stocker à -20°C. Stable pendant un an après l'expédition.

Tampon de stockage:

PBS avec azoture de sodium à 0,02 % et glycérol à 50 % pH 7,3

L'aliquotage n'est pas nécessaire pour le stockage à -20C

***** Les 20ul contiennent 0,1% de BSA.**

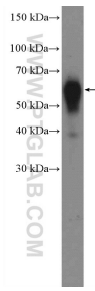
For technical support and original validation data for this product please contact:

T: 1 (888) 4PTGLAB (1-888-478-4522) (toll free in USA), or 1(312) 455-8498 (outside USA)

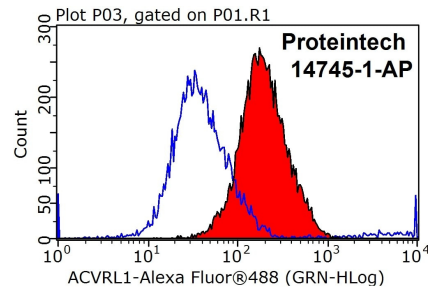
E: proteintech@ptglab.com
W: ptglab.com

This product is exclusively available under Proteintech Group brand and is not available to purchase from any other manufacturer.

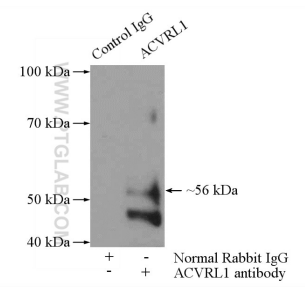
Données de validation sélectionnées



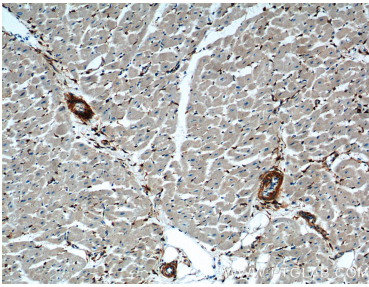
human placenta tissue were subjected to SDS PAGE followed by western blot with 14745-1-AP (ACVRL1 Antibody) at dilution of 1:600 incubated at room temperature for 1.5 hours.



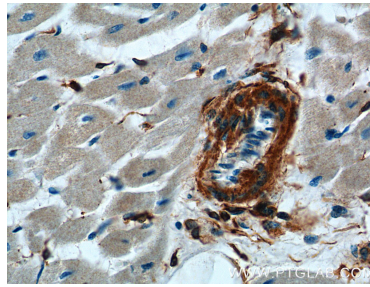
1×10^6 Jurkat cells were stained with 0.2ug ACVRL1 antibody (14745-1-AP, red) and control antibody (blue). Fixed with 90% MeOH blocked with 3% BSA (30 min). Alexa Fluor 488-conjugated AffiniPure Goat Anti-Rabbit IgG(H+L) with dilution 1:1000.



IP Result of anti-ACVRL1 (IP:14745-1-AP, 4ug; Detection:14745-1-AP 1:300) with Jurkat cells lysate 2400ug.



Immunohistochemical analysis of paraffin-embedded human heart tissue slide using 14745-1-AP (ACVRL1 Antibody) at dilution of 1:200 (under 10x lens).



Immunohistochemical analysis of paraffin-embedded human heart tissue slide using 14745-1-AP (ACVRL1 Antibody) at dilution of 1:200 (under 40x lens).