

À des fins de recherche uniquement

# Anticorps Polyclonal de lapin anti-CLP1



Numéro de catalogue: 14746-1-AP

1 Publications

## Informations de base

|  |   |  |
|--|---|--|
| <b>Numéro de catalogue:</b><br>14746-1-AP  | <b>Numéro d'acquisition GenBank:</b><br>BC000446  | <b>Méthode de purification:</b><br>Purification par affinité contre l'antigène |
| <b>Taille:</b><br>150ul , Concentration: 700 µg/ml by Nanodrop and 427 µg/ml by Bradford method using BSA as the standard; | <b>Identification du gène (NCBI):</b><br>10978  | <b>Dilutions recommandées:</b><br>WB 1:500-1:1000                              |
| <b>Hôte:</b><br>Lapin  | <b>Nom complet:</b><br>CLP1, cleavage and polyadenylation factor I subunit, homolog (S. cerevisiae) |  |
| <b>Isotype:</b><br>IgG   | <b>MW calculé</b><br>48 kDa   |  |
| <b>Immunogen Catalog Number:</b><br>AG6479   | <b>MW observés:</b><br>41 kDa, 48 kDa   |  |

## Applications

|   |  |
|---|--|
| <b>Applications testées:</b><br>WB, ELISA         | <b>Contrôles positifs:</b><br>WB : tissu testiculaire de souris, cellules HeLa |
| <b>Spécificité de l'espèce:</b><br>Humain, souris |  |

## Informations générales

CLP1, also named as HEAB, is a 425 amino acid protein, which belongs to the Clp1 family. CLP1 as a polynucleotide kinase, that can phosphorylate the 5'-hydroxyl groups of double-stranded RNA (dsRNA), single-stranded RNA (ssRNA), double-stranded DNA (dsDNA) and double-stranded DNA:RNA hybrids. Human CLP1 is a component of the mRNA 3' end cleavage and polyadenylation machinery<sup>4,5</sup> and studies in yeast have postulated a function for CLP1 in coupling mRNA 3' end processing with RNA Pol II transcriptional termination. CLP1 exists 2 isoforms with MV 41 kDa and 48 kDa.

## Publications notables

| Autrice     | Pubmed ID | Journal           | Application |
|-------------|-----------|-------------------|-------------|
| Xiaodong Lu | 27353326  | Nucleic Acids Res |             |

## Stockage

**Stockage:**  
Stocker à -20°C. Stable pendant un an après l'expédition.  
**Tampon de stockage:**  
PBS avec azoture de sodium à 0,02 % et glycérol à 50 % pH 7,3  
L'aliquotage n'est pas nécessaire pour le stockage à -20C

\*\*\* Les 20ul contiennent 0,1% de BSA.

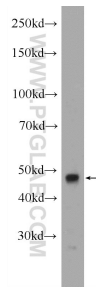
For technical support and original validation data for this product please contact:

T: 1 (888) 4PTGLAB (1-888-478-4522) (toll free in USA), or 1(312) 455-8498 (outside USA)

E: [proteintech@ptglab.com](mailto:proteintech@ptglab.com)  
W: [ptglab.com](http://ptglab.com)

This product is exclusively available under Proteintech Group brand and is not available to purchase from any other manufacturer.

## Données de validation sélectionnées



mouse testis tissue were subjected to SDS PAGE followed by western blot with 14746-1-AP (CLP1 Antibody) at dilution of 1:600 incubated at room temperature for 1.5 hours.