

À des fins de recherche uniquement

Anticorps Polyclonal de lapin anti-SDF2



Numéro de catalogue: 14747-1-AP

Informations de base

Numéro de catalogue: 14747-1-AP	Numéro d'acquisition GenBank: BC000500	Méthode de purification: Purification par affinité contre l'antigène
Taille: 150ul , Concentration: 500 µg/ml by Nanodrop;	Identification du gène (NCBI): 6388	Dilutions recommandées: WB 1:1000-1:4000
Hôte: Lapin	Nom complet: stromal cell-derived factor 2	
Isotype: IgG	MW calculé 23 kDa	
Immunogen Catalog Number: AG6480	MW observés: 23 kDa	

Applications

Applications testées: WB, ELISA	Contrôles positifs: WB : cellules Jurkat, cellules HUVEC, cellules U2OS, cœur de souris
Spécificité de l'espèce: Humain, souris	

Informations générales

SDF-2 is a small protein of 211 amino acids that is ubiquitously expressed in lung, breast, colon, liver and kidney. SDF-2 is localized in the ER and has been reported to get involved in multiple endoplasmic reticulum (ER) functions, including the misfolded protein catabolic process, protein glycosylation, and ER protein quality control.

Stockage

Stockage:
Stocker à -20°C. Stable pendant un an après l'expédition.
Tampon de stockage:
PBS avec azoture de sodium à 0,02 % et glycérol à 50 % pH 7,3
L'aliquotage n'est pas nécessaire pour le stockage à -20C

***** Les 20ul contiennent 0,1% de BSA.**

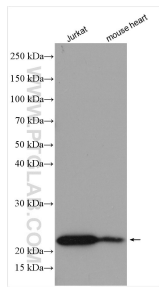
For technical support and original validation data for this product please contact:

T: 1 (888) 4PTGLAB (1-888-478-4522) (toll free in USA), or 1(312) 455-8498 (outside USA)

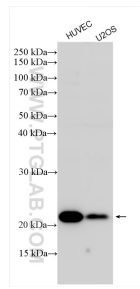
E: proteintech@ptglab.com
W: ptglab.com

This product is exclusively available under Proteintech Group brand and is not available to purchase from any other manufacturer.

Données de validation sélectionnées



Various lysates were subjected to SDS PAGE followed by western blot with 14747-1-AP (SDF2 antibody) at dilution of 1:2000 incubated at room temperature for 1.5 hours.



Various lysates were subjected to SDS PAGE followed by western blot with 14747-1-AP (SDF2 antibody) at dilution of 1:2000 incubated at room temperature for 1.5 hours.