

À des fins de recherche uniquement

# Anticorps Polyclonal de lapin anti-COMT



Numéro de catalogue: 14754-1-AP

11 Publications

## Informations de base

Numéro de catalogue:

14754-1-AP

Taille:

150ul, Concentration: 500 µg/ml by Nanodrop;

Hôte:

Lapin

Isotype:

IgG

Immunogen Catalog Number:

AG6502

Numéro d'acquisition GenBank:

BC000419

Identification du gène (NCBI):

1312

Nom complet:

catechol-O-methyltransferase

MW calculé

30 kDa

MW observés:

28-30 kDa

Méthode de purification:

Purification par affinité contre l'antigène

Dilutions recommandées:

WB 1:1000-1:4000

IP 0.5-4.0 ug for IP and 1:500-1:1000 for WB

IHC 1:20-1:200

IF 1:50-1:500

## Applications

Applications testées:

FC, IF, IHC, IP, WB, ELISA

Demandes citées:

IF, IHC, WB

Spécificité de l'espèce:

Humain, rat, souris

Espèces citées:

Humain, rat, souris

Contrôles positifs:

WB : cellules HEK-293, cellules K-562, foie de rat, foie de souris, placenta humain

IP : cellules K-562,

IHC : tissu hépatique humain,

IF : tissu de cervelet de souris, cellules HepG2

**Remarque-IHC: il est suggéré de démasquer l'antigène avec un tampon de TE buffer pH 9,0; (\*) À défaut, le démasquage de l'antigène peut être effectué avec un tampon citrate pH 6,0.**

## Informations générales

Catechol O-methyltransferase (COMT) is an important enzyme that catalyzes O-methylation and inactivation of metabolically active catechol-containing bioactive molecules and drugs. The mammalian COMT enzyme exists in soluble form (24-26 kDa) and membrane-bound form (28-30 kDa), which are encoded by a single gene utilizing different promoters.

## Publications notables

Autrice	Pubmed ID	Journal	Application
Adedamola Bayo-Olugbami	32912107	Nutr Neurosci	WB
Yonglong Zhou	34725639	Biomed Res Int	WB,IF
Yinrui Guo	34045460	Transl Psychiatry	WB

## Stockage

Stockage:

Stocker à -20°C. Stable pendant un an après l'expédition.

Tampon de stockage:

PBS avec azoture de sodium à 0,02 % et glycérol à 50 % pH 7,3

L'aliquotage n'est pas nécessaire pour le stockage à -20C

\*\*\* Les 20ul contiennent 0,1% de BSA.

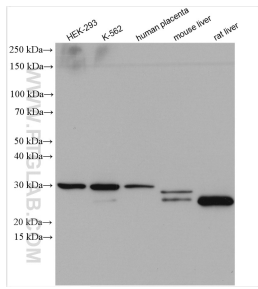
For technical support and original validation data for this product please contact:

T: 1 (888) 4PTGLAB (1-888-478-4522) (toll free in USA), or 1(312) 455-8498 (outside USA)

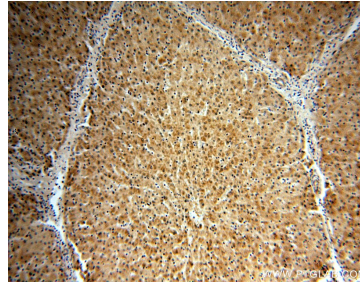
E: proteintech@ptglab.com  
W: ptglab.com

This product is exclusively available under Proteintech Group brand and is not available to purchase from any other manufacturer.

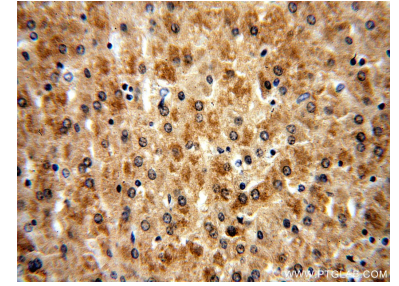
## Données de validation sélectionnées



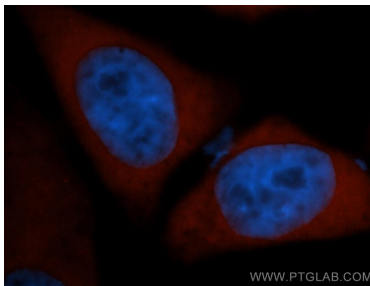
Various lysates were subjected to SDS PAGE followed by western blot with 14754-1-AP (COMT antibody) at dilution of 1:2000 incubated at room temperature for 1.5 hours.



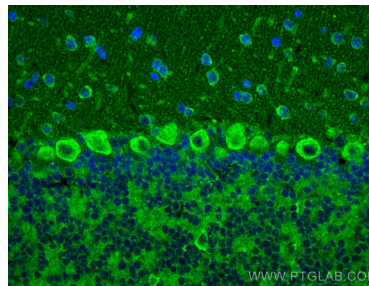
Immunohistochemical analysis of paraffin-embedded human liver using 14754-1-AP (COMT antibody) at dilution of 1:100 (under 10x lens).



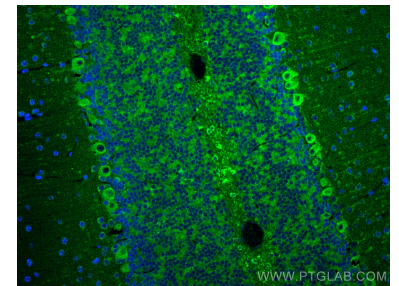
Immunohistochemical analysis of paraffin-embedded human liver using 14754-1-AP (COMT antibody) at dilution of 1:100 (under 40x lens).



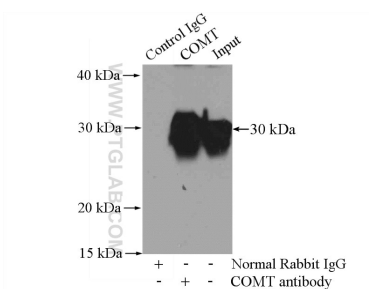
Immunofluorescent analysis of HepG2 cells, using COMT antibody 14754-1-AP at 1:50 dilution and Rhodamine-labeled goat anti-rabbit IgG (red). Blue pseudocolor = DAPI (fluorescent DNA dye).



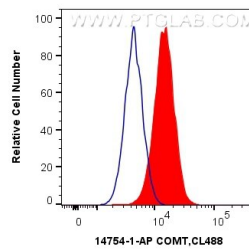
Immunofluorescent analysis of (4% PFA) fixed mouse cerebellum tissue using COMT antibody (14754-1-AP) at dilution of 1:200 and CoraLite@488-Conjugated AffiniPure Goat Anti-Rabbit IgG(H+L).



Immunofluorescent analysis of (4% PFA) fixed mouse cerebellum tissue using COMT antibody (14754-1-AP) at dilution of 1:200 and CoraLite@488-Conjugated AffiniPure Goat Anti-Rabbit IgG(H+L).



IP Result of anti-COMT (IP:14754-1-AP, 4ug; Detection:14754-1-AP 1:500) with K-562 cells lysate 1200ug.



1X10<sup>6</sup> HepG2 cells were intracellularly stained with 0.4 ug Anti-Human COMT (14754-1-AP) and CoraLite@488-Conjugated AffiniPure Goat Anti-Rabbit IgG(H+L) at dilution 1:1000 (red), or 0.4 ug Isotype Control. Cells were fixed with 4% PFA and permeabilized with Flow Cytometry Perm Buffer (PF00011-C).