

À des fins de recherche uniquement

Anticorps Polyclonal de lapin anti-PSMD11



Numéro de catalogue: 14786-1-AP

Phare

7 Publications

Informations de base

Numéro de catalogue:
14786-1-AP

Taille:
150ul, Concentration: 350 µg/ml by Nanodrop and 333 µg/ml by Bradford method using BSA as the standard;

Hôte:
Lapin

Isotype:
IgG

Immunogen Catalog Number:
AG6435

Numéro d'acquisition GenBank:
BC000437

Identification du gène (NCBI):
5717

Nom complet:
proteasome (prosome, macropain)
26S subunit, non-ATPase, 11

MW calculé

47 kDa

MW observés:

47 kDa

Méthode de purification:
Purification par affinité contre l'antigène

Dilutions recommandées:
WB 1:500-1:2000
IP 0.5-4.0 ug for IP and 1:500-1:1000 for WB
IF 1:10-1:100

Applications

Applications testées:
IF, IP, WB, ELISA

Demandes citées:
IF, WB

Spécificité de l'espèce:
Humain, rat, souris

Espèces citées:
Humain, rat, souris

Contrôles positifs:

WB : cellules HeLa, cellules MCF-7, tissu cérébral de rat, tissu testiculaire de souris

IP : cellules MCF-7,

IF : cellules MCF-7,

Informations générales

The 26 S proteasome is a 2.5-MDa molecular machine that degrades ubiquitinated proteins in eukaryotic cells. It consists of a proteolytic core particle and two 19 S regulatory particles (RPs) composed of 6 ATPase (RPT) and 13 non-ATPase (RPN) subunits. PSMD11 gene encodes 19S proteasome subunit RPN6. Increased levels of PSMD11 and corresponding increased assembly of the 26S/30S proteasome is correlated with high proteasome activity. In vitro ectopic expression of PSMD11 is sufficient to increase proteasome assembly and activity. Latest research has implicated PSMD11 in regulation of human embryonic stem cells function.

Publications notables

Autrice	Pubmed ID	Journal	Application
Zhen Dai	35253427	J Med Chem	WB
Linlin Zhao	33517884	BMC Dev Biol	WB, IF
Vidya Sagar Kesireddy	31431059	FASEB J	WB

Stockage

Stockage:

Stocker à -20°C. Stable pendant un an après l'expédition.

Tampon de stockage:

PBS avec azoture de sodium à 0,02 % et glycérol à 50 % pH 7,3

L'aliquotage n'est pas nécessaire pour le stockage à -20C

*** Les 20ul contiennent 0,1% de BSA.

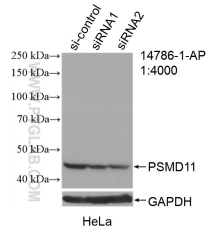
For technical support and original validation data for this product please contact:

T: 1 (888) 4PTGLAB (1-888-478-4522) (toll free in USA), or 1(312) 455-8498 (outside USA)

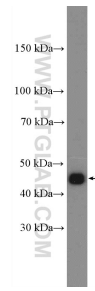
E: proteintech@ptglab.com
W: ptglab.com

This product is exclusively available under Proteintech Group brand and is not available to purchase from any other manufacturer.

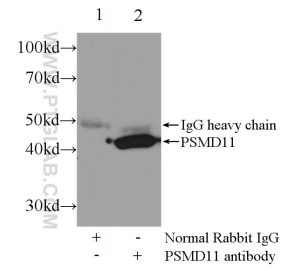
Données de validation sélectionnées



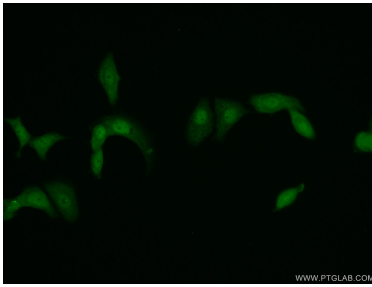
WB result of PSMD11 antibody (14786-1-AP; 1:4000; incubated at room temperature for 1.5 hours) with sh-Control and sh-PSMD11 transfected HeLa cells.



HeLa cells were subjected to SDS PAGE followed by western blot with 14786-1-AP (PSMD11 Antibody) at dilution of 1:1000 incubated at room temperature for 1.5 hours.



IP Result of anti-PSMD11 (IP:14786-1-AP, 3ug; Detection:14786-1-AP 1:500) with MCF-7 cells lysate 2000ug.



Immunofluorescent analysis of MCF-7 cells using 14786-1-AP (PSMD11 antibody) at dilution of 1:25 and Alexa Fluor 488-conjugated AffiniPure Goat Anti-Rabbit IgG(H+L).