

À des fins de recherche uniquement

Anticorps Polyclonal de lapin anti-CBS



Numéro de catalogue: 14787-1-AP

Phare

89 Publications

Informations de base

Numéro de catalogue:

14787-1-AP

Taille:

150ul, Concentration: 700 µg/ml by Nanodrop;

Hôte:

Lapin

Isotype:

IgG

Immunogen Catalog Number:

AG6437

Numéro d'acquisition GenBank:

BC000440

Identification du gène (NCBI):

875

Nom complet:

cystathionine-beta-synthase

MW calculé

61 kDa

MW observés:

61-63 kDa

Méthode de purification:

Purification par affinité contre l'antigène

Dilutions recommandées:

WB 1:2000-1:16000

IP 0.5-4.0 ug for IP and 1:500-1:1000 for WB

IHC 1:100-1:400

IF 1:20-1:200

Applications

Applications testées:

IF, IHC, IP, WB, ELISA

Demandes citées:

IF, IHC, WB

Spécificité de l'espèce:

Humain, rat, souris

Espèces citées:

canin, Humain, Lapin, rat, souris

Remarque-IHC: il est suggéré de démasquer l'antigène avec un tampon de TE buffer pH 9,0; (*) À défaut, le démasquage de l'antigène peut être effectué avec un tampon citrate pH 6,0.

Contrôles positifs:

WB : cellules HEK-293, cellules HeLa, cellules HepG2, cellules LNCaP, cellules MCF-7, cellules SKOV-3, cellules THP-1, tissu cérébral de rat, tissu cérébral de souris, tissu de côlon de souris, tissu hépatique de rat, tissu rénal de rat, tissu rénal de souris

IP : tissu rénal de souris,

IHC : tissu de cancer du pancréas humain, tissu de côlon humain

IF : cellules HeLa,

Informations générales

The CBS gene encodes cystathionine beta-synthase, which catalyzes the first irreversible step of transsulfuration. The CBS enzyme is a homotetramer of 63-kD subunits and requires pyridoxal phosphate and heme for activity (PMID:11230183). CBS protein is localized in most areas of the brain, but predominantly in the cell bodies and neuronal processes of Purkinje cells and Ammon's horn neurons (PMID:12588964).

Publications notables

Autrice	Pubmed ID	Journal	Application
Pilar González-García	32975579	Hum Mol Genet	WB
Shanwen Chen	31542354	Cancer Lett	WB,IHC,IF
Ches'Nique M Phillips	28923859	Cancer Res	WB,IHC

Stockage

Stockage:

Stocker à -20°C. Stable pendant un an après l'expédition.

Tampon de stockage:

PBS avec azoture de sodium à 0,02 % et glycérol à 50 % pH 7,3

L'aliquotage n'est pas nécessaire pour le stockage à -20C

*** Les 20ul contiennent 0,1% de BSA.

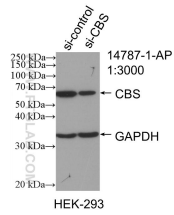
For technical support and original validation data for this product please contact:

T: 1 (888) 4PTGLAB (1-888-478-4522) (toll free in USA), or 1(312) 455-8498 (outside USA)

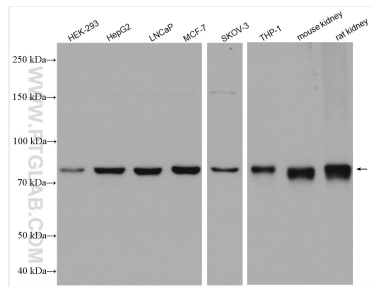
E: proteintech@ptglab.com
W: ptglab.com

This product is exclusively available under Proteintech Group brand and is not available to purchase from any other manufacturer.

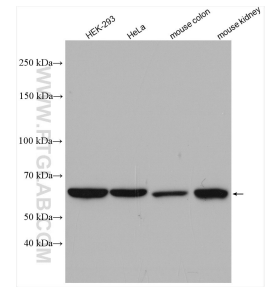
Données de validation sélectionnées



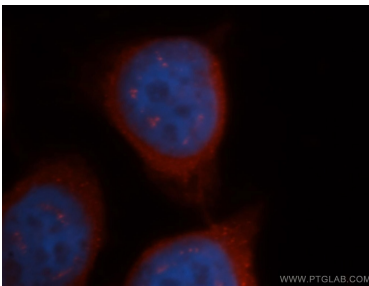
WB result of CBS antibody (14787-1-AP; 1:3000; incubated at room temperature for 1.5 hours) with sh-Control and sh-CBS transfected HEK-293 cells.



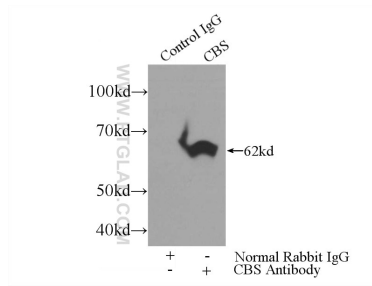
Various lysates were subjected to SDS PAGE followed by western blot with 14787-1-AP (CBS antibody) at dilution of 1:8000 incubated at room temperature for 1.5 hours.



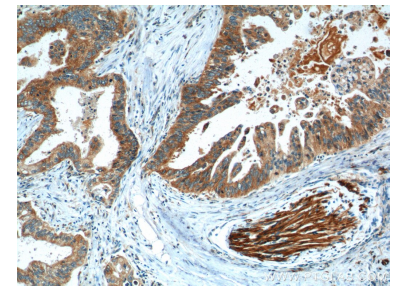
Various lysates were subjected to SDS PAGE followed by western blot with 14787-1-AP (CBS antibody) at dilution of 1:2500 incubated at room temperature for 1.5 hours.



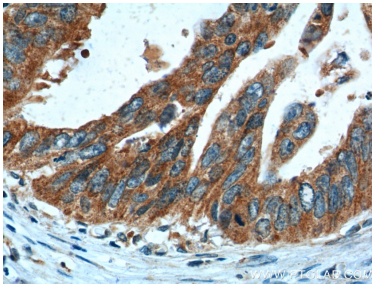
Immunofluorescent analysis of HeLa cells, using CBS antibody 14787-1-AP at 1:50 dilution and Rhodamine-labeled goat anti-rabbit IgG (red). Blue pseudocolor = DAPI (fluorescent DNA dye).



IP Result of anti-CBS (IP:14787-1-AP, 3µg; Detection:14787-1-AP 1:500) with mouse kidney tissue lysate 4000µg.



Immunohistochemical analysis of paraffin-embedded human pancreas cancer tissue slide using 14787-1-AP (CBS Antibody) at dilution of 1:200 (under 10x lens). Heat mediated antigen retrieval with Tris-EDTA buffer (pH 9.0).



Immunohistochemical analysis of paraffin-embedded human pancreas cancer tissue slide using 14787-1-AP (CBS Antibody) at dilution of 1:200 (under 40x lens). Heat mediated antigen retrieval with Tris-EDTA buffer (pH 9.0).