

À des fins de recherche uniquement

Anticorps Polyclonal de lapin anti-CAMKV



Numéro de catalogue: 14788-1-AP

2 Publications

Informations de base

Numéro de catalogue:
14788-1-AP

Taille:
150ul, Concentration: 500 µg/ml by Nanodrop and 267 µg/ml by Bradford method using BSA as the standard;

Hôte:
Lapin

Isotype:
IgG

Immunogen Catalog Number:
AG6438

Numéro d'acquisition GenBank:
BC000497

Identification du gène (NCBI):
79012

Nom complet:
CaM kinase-like vesicle-associated

MW calculé
54 kDa

MW observés:
54-75 kDa

Méthode de purification:
Purification par affinité contre l'antigène

Dilutions recommandées:
WB 1:500-1:2400
IP 0.5-4.0 ug for IP and 1:500-1:1000 for WB
IF 1:50-1:500

Applications

Applications testées:
IF, IP, WB, ELISA

Demandes citées:
WB

Spécificité de l'espèce:
Humain, rat, souris

Espèces citées:
Humain, souris

Contrôles positifs:

WB : tissu cérébral de souris, cellules HeLa, cellules PC-3, tissu splénique de souris

IP : tissu cérébral de souris,

IF : tissu cérébral de souris,

Informations générales

CAMKV(CaM kinase-like vesicle-associated protein) is also named as 1G5,VACAMKL and belongs to the CAMK Ser/Thr protein kinase family. The CAMKV protein, which accumulates predominantly during postnatal development, binds to calmodulin in the presence of calcium. It is detected only in the CNS, is absent from cerebellum, but is detected in most other brain regions, especially regions of the cortex. The protein is predominantly detected in association with the plasma membrane of somatic cell and in neurites, both axons and dendrites, and is frequently observed in active zones, usually associated with vesicle-like structures. Its sequence suggests that 1G5 may be membrane associated(PMID:8283228).

Publications notables

Autrice	Pubmed ID	Journal	Application
Qingyang Zhang	34551807	Mol Neurodegener	WB
Tianwei Chen	36453019	Mol Oncol	WB

Stockage

Stockage:

Stocker à -20°C. Stable pendant un an après l'expédition.

Tampon de stockage:

PBS avec azoture de sodium à 0,02 % et glycérol à 50 % pH 7,3

L'aliquotage n'est pas nécessaire pour le stockage à -20C

*** Les 20ul contiennent 0,1% de BSA.

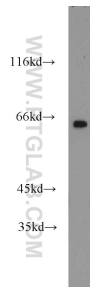
For technical support and original validation data for this product please contact:

T: 1 (888) 4PTGLAB (1-888-478-4522) (toll free in USA), or 1(312) 455-8498 (outside USA)

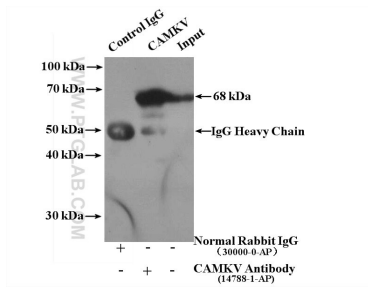
E: proteintech@ptglab.com
W: ptglab.com

This product is exclusively available under Proteintech Group brand and is not available to purchase from any other manufacturer.

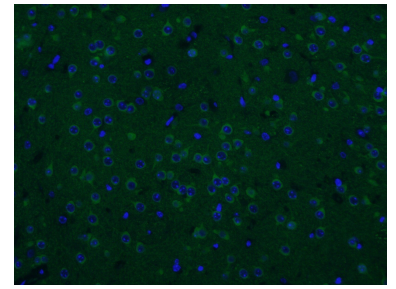
Données de validation sélectionnées



mouse brain tissue were subjected to SDS PAGE followed by western blot with 14788-1-AP (CAMKV antibody) at dilution of 1:1200 incubated at room temperature for 1.5 hours.



IP Result of anti-CAMKV (IP:14788-1-AP, 4ug; Detection:14788-1-AP 1:500) with mouse brain tissue lysate 4000ug.



Immunofluorescent analysis of (4% PFA) fixed mouse brain tissue using 14788-1-AP (CAMKV antibody) at dilution of 1:50 and CoraLite488-Conjugated AffiniPure Goat Anti-Rabbit IgG(H+L).