

À des fins de recherche uniquement

# Anticorps Polyclonal de lapin anti-GOT2



Numéro de catalogue: 14800-1-AP

Phare

29 Publications

## Informations de base

Numéro de catalogue:

14800-1-AP

Taille:

150ul, Concentration: 550 µg/ml by Nanodrop;

Hôte:

Lapin

Isotype:

IgG

Immunogen Catalog Number:

AG6514

Numéro d'acquisition GenBank:

BC000525

Identification du gène (NCBI):

2806

Nom complet:

glutamic-oxaloacetic transaminase 2, mitochondrial (aspartate aminotransferase 2)

MW calculé

47 kDa

MW observés:

43-45 kDa

Méthode de purification:

Purification par affinité contre l'antigène

Dilutions recommandées:

WB 1:2000-1:16000

IHC 1:50-1:500

IF 1:20-1:200

## Applications

Applications testées:

FC, IF, IHC, WB, ELISA

Demandes citées:

CoIP, IHC, IP, WB

Spécificité de l'espèce:

Humain, rat, souris

Espèces citées:

Humain, rat, souris

**Remarque-IHC: il est suggéré de démasquer l'antigène avec un tampon de TE buffer pH 9,0; (\*) A défaut, 'le démasquage de l'antigène peut être 'effectué avec un tampon citrate pH 6,0.**

Contrôles positifs:

WB : cellules A431, cellules HEK-293, cellules HepG2, cerveau de rat, cerveau de souris, tissu cardiaque de souris, tissu splénique de souris

IHC : tissu de cancer du sein humain, tissu cardiaque de rat, tissu cérébral de rat, tissu cutané humain, tissu hépatique humain, tissu rénal humain

IF : cellules MCF-7,

## Informations générales

GOT2 encodes the mitochondrial glutamate oxaloacetate transaminase and plays an essential role in the intracellular NAD(H) redox balance. Upregulation of GOT2 has been reported in various cancers, including breast cancer and pancreatic cancer. GOT2 mutation leads to autosomal recessive neurometabolic disorder.

## Publications notables

Autrice	Pubmed ID	Journal	Application
Yajuan Zhao	34557495	Front Cell Dev Biol	IHC
Shizhen Qin	27575953	J Proteome Res	WB
Rongfu Tu	34601505	Oncogene	WB

## Stockage

Stockage:

Stocker à -20°C. Stable pendant un an après l'expédition.

Tampon de stockage:

PBS avec azoture de sodium à 0,02 % et glycérol à 50 % pH 7,3

L'aliquotage n'est pas nécessaire pour le stockage à -20C

\*\*\* Les 20ul contiennent 0,1% de BSA.

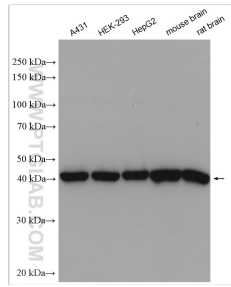
For technical support and original validation data for this product please contact:

T: 1 (888) 4PTGLAB (1-888-478-4522) (toll free in USA), or 1(312) 455-8498 (outside USA)

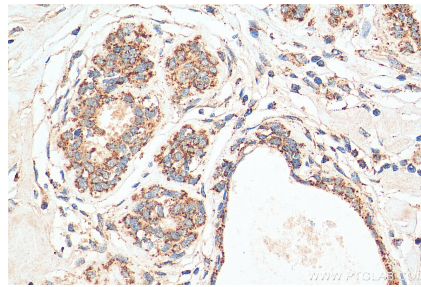
E: proteintech@ptglab.com  
W: ptglab.com

This product is exclusively available under Proteintech Group brand and is not available to purchase from any other manufacturer.

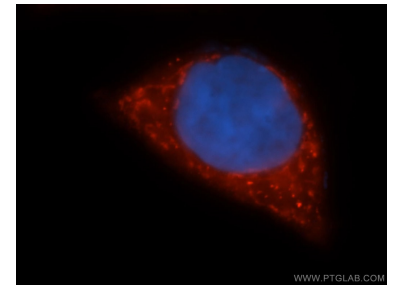
## Données de validation sélectionnées



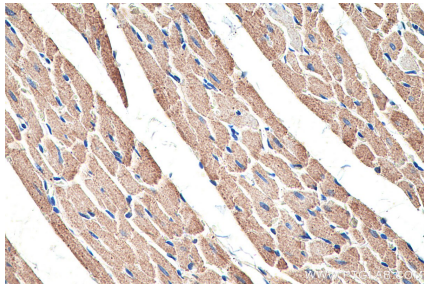
Various lysates were subjected to SDS PAGE followed by western blot with 14800-1-AP (GOT2 antibody) at dilution of 1:8000 incubated at room temperature for 1.5 hours.



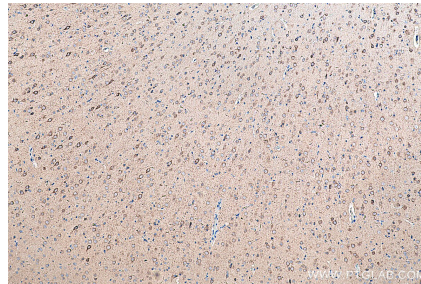
Immunohistochemical analysis of paraffin-embedded human breast cancer tissue slide using 14800-1-AP (GOT2 antibody) at dilution of 1:200 (under 40x lens). Heat mediated antigen retrieval with Tris-EDTA buffer (pH 9.0).



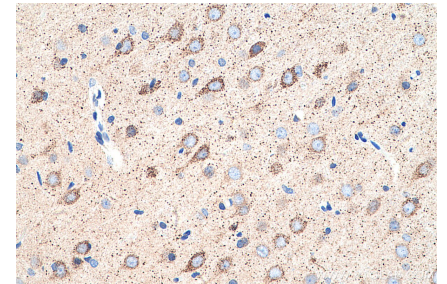
Immunofluorescent analysis of MCF-7 cells, using GOT2 antibody 14800-1-AP at 1:50 dilution and Rhodamine-labeled goat anti-rabbit IgG (red). Blue pseudocolor = DAPI (fluorescent DNA dye).



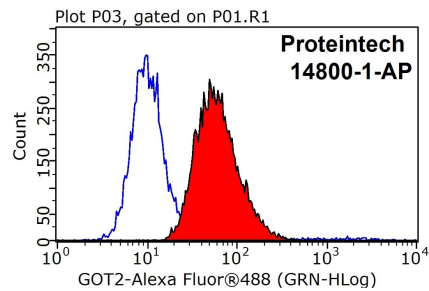
Immunohistochemical analysis of paraffin-embedded rat heart tissue slide using 14800-1-AP (GOT2 antibody) at dilution of 1:4000 (under 40x lens). Heat mediated antigen retrieval with Tris-EDTA buffer (pH 9.0).



Immunohistochemical analysis of paraffin-embedded rat brain tissue slide using 14800-1-AP (GOT2 antibody) at dilution of 1:4000 (under 10x lens). Heat mediated antigen retrieval with Tris-EDTA buffer (pH 9.0).



Immunohistochemical analysis of paraffin-embedded rat brain tissue slide using 14800-1-AP (GOT2 antibody) at dilution of 1:4000 (under 40x lens). Heat mediated antigen retrieval with Tris-EDTA buffer (pH 9.0).



$1 \times 10^6$  HEK-293 cells were stained with 0.2ug GOT2 antibody (14800-1-AP, red) and control antibody (blue). Fixed with 90% MeOH blocked with 3% BSA (30 min). Alexa Fluor 488-conjugated AffiniPure Goat Anti-Rabbit IgG(H+L) with dilution 1:1000.