

À des fins de recherche uniquement

Anticorps Polyclonal de lapin anti- ISCU



Numéro de catalogue: 14812-1-AP

Phare

22 Publications

Informations de base

Numéro de catalogue:

14812-1-AP

Taille:

150ul, Concentration: 500 µg/ml by Nanodrop and 293 µg/ml by Bradford method using BSA as the standard;

Hôte:

Lapin

Isotype:

IgG

Immunogen Catalog Number:

AG6562

Numéro d'acquisition GenBank:

BC061903

Identification du gène (NCBI):

23479

Nom complet:

iron-sulfur cluster scaffold homolog (E. coli)

MW calculé

18 kDa

MW observés:

14-15 kDa, 18-19 kDa

Méthode de purification:

Purification par affinité contre l'antigène

Dilutions recommandées:

WB 1:500-1:1000

IP 0.5-4.0 µg for IP and 1:500-1:1000 for WB

IHC 1:50-1:500

IF 1:20-1:200

Applications

Applications testées:

IF, IHC, IP, WB, ELISA

Demandes citées:

IF, IHC, WB

Spécificité de l'espèce:

Humain, rat, souris

Espèces citées:

Humain, rat, souris

Remarque-IHC: il est suggéré de démasquer l'antigène avec un tampon de TE buffer pH 9,0; (*) A défaut, 'le démasquage de l'antigène peut être 'effectué avec un tampon citrate pH 6,0.

Contrôles positifs:

WB : tissu cardiaque de souris, cellules A549, cellules COLO 320, cellules HeLa, cellules Raji

IP : tissu cardiaque de souris,

IHC : tissu de cancer de l'endomètre humain, tissu de cancer du poumon humain

IF : cellules MCF-7,

Informations générales

Iron-sulfur (Fe-S) clusters are required for the functions of mitochondrial aconitase, mammalian iron regulatory protein 1, and many other proteins in multiple subcellular compartments. Mitochondrial and cytosolic isoforms of the human Fe-S cluster scaffold protein, iron-sulfur cluster assembly enzyme (ISCU), is involved in activation of iron uptake, redistribution of intracellular iron, and decreased utilization of iron in Fe-S proteins.

Defects in ISCU gene are the cause of myopathy with exercise intolerance Swedish type (MEIS), which is characterized by lifelong severe exercise intolerance (PMID: 18304497). Two ISCU isoforms ISCU1 (cytosolic, 15 kDa) and ISCU2 (mitochondrial, 18 kDa), were produced by alternative splicing, and ISCU2 is considered the canonical isoform1. ISCU2 protein is rapidly processed upon maturation (PMID: 11060020). Proteintech's ISCU antibody 14812-1-AP is raised against the full-length ISCU2 and is expected to detect 14 kDa, 15 kDa and 18-19 kDa bands which has been reported in the previous observation (PMID: 11060020).

Publications notables

Autrice	Pubmed ID	Journal	Application
Rufeng Zhang	31530015	FASEB J	WB
Shashank Masaldan	28888202	Redox Biol	WB
Yuki Funauchi	26560363	Sci Rep	WB,IHC,IF

Stockage

Stockage:

Stocker à -20°C. Stable pendant un an après l'expédition.

Tampon de stockage:

PBS avec azoture de sodium à 0,02 % et glycérol à 50 % pH 7,3

L'aliquotage n'est pas nécessaire pour le stockage à -20C

*** Les 20ul contiennent 0,1% de BSA.

For technical support and original validation data for this product please contact:

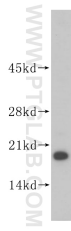
T: 1 (888) 4PTGLAB (1-888-478-4522) (toll free in USA), or 1(312) 455-8498 (outside USA)

E: proteintech@ptglab.com

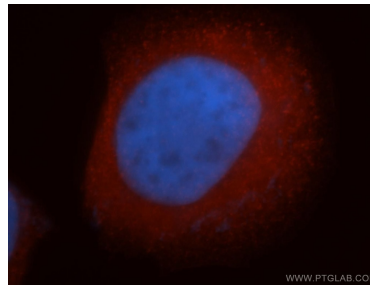
W: ptglab.com

This product is exclusively available under Proteintech Group brand and is not available to purchase from any other manufacturer.

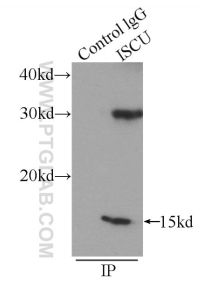
Données de validation sélectionnées



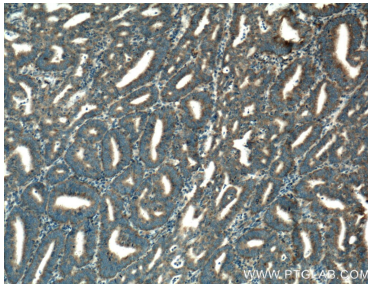
mouse heart tissue were subjected to SDS PAGE followed by western blot with 14812-1-AP (ISCU antibody) at dilution of 1:500 incubated at room temperature for 1.5 hours.



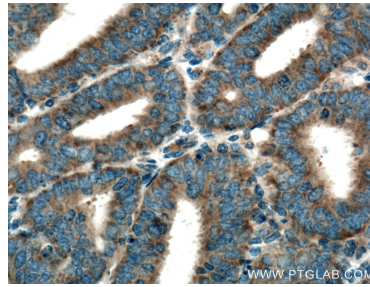
Immunofluorescent analysis of MCF-7 cells, using ISCU antibody 14812-1-AP at 1:50 dilution and Rhodamine-labeled goat anti-rabbit IgG (red). Blue pseudocolor = DAPI (fluorescent DNA dye).



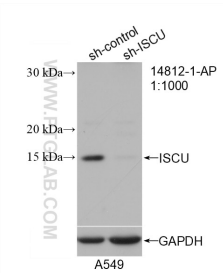
IP Result of anti-ISCU (IP:14812-1-AP, 3ug; Detection:14812-1-AP 1:500) with mouse heart tissue lysate 4000ug.



Immunohistochemical analysis of paraffin-embedded human endometrial cancer tissue slide using 14812-1-AP (ISCU Antibody) at dilution of 1:200 (under 10x lens). Heat mediated antigen retrieval with Tris-EDTA buffer (pH 9.0).



Immunohistochemical analysis of paraffin-embedded human endometrial cancer tissue slide using 14812-1-AP (ISCU Antibody) at dilution of 1:200 (under 40x lens). Heat mediated antigen retrieval with Tris-EDTA buffer (pH 9.0).



WB result of ISCU antibody (14812-1-AP; 1:1000; incubated at room temperature for 1.5 hours) with sh-Control and sh-ISCU transfected A549 cells.