

À des fins de recherche uniquement

Anticorps Polyclonal de lapin anti-MICAL1



Numéro de catalogue: 14818-1-AP

Phare

22 Publications

Informations de base

Numéro de catalogue:

14818-1-AP

Taille:

150ul, Concentration: 550 µg/ml by Nanodrop and 267 µg/ml by Bradford method using BSA as the standard;

Hôte:

Lapin

Isotype:

IgG

Immunogen Catalog Number:

AG6578

Numéro d'acquisition GenBank:

BC052983

Identification du gène (NCBI):

64780

Nom complet:

microtubule associated monooxygenase, calponin and LIM domain containing 1

MW calculé

118 kDa

MW observés:

120 kDa

Méthode de purification:

Purification par affinité contre l'antigène

Dilutions recommandées:

WB 1:2000-1:16000

IP 0.5-4.0 ug for IP and 1:500-1:2000 for WB

IHC 1:20-1:200

IF 1:50-1:500

Applications

Applications testées:

FC, IF, IHC, IP, WB, ELISA

Demandes citées:

CoIP, IF, IHC, WB

Spécificité de l'espèce:

Humain, souris

Espèces citées:

Humain, souris

Remarque-IHC: il est suggéré de démasquer l'antigène avec un tampon de TE buffer pH 9.0; (*) A défaut, le démasquage de l'antigène peut être effectué avec un tampon citrate pH 6,0.

Contrôles positifs:

WB : cellules Jurkat, cellules HEK-293, cellules HeLa, cellules T-47D, tissu cérébral humain, tissu pulmonaire de souris

IP : cellules HeLa, cellules T-47D

IHC : tissu pulmonaire humain, tissu cardiaque humain, tissu cutané humain, tissu ovarien humain, tissu placentaire humain, tissu splénique humain, tissu testiculaire humain

IF : HeLa, cellules HeLa

Informations générales

MICALs (Molecules Interacting with CasL) are atypical multidomain flavoenzymes with diverse cellular functions. There are three known isoforms, MICAL1, MICAL2 and MICAL3, as well as the MICAL-like proteins MICAL-L1 and MICAL-L2. MICAL1 has four conserved domains: an N-terminal flavin adenine dinucleotide (FAD) binding domain, a calponin homology (CH) domain, a Lin11, Isl-1 and Mec-3 (LIM) domain and a C-terminal coiled-coil (CC) domain. MICAL1 is reported to regulate actin stress fibers and be required for normal actin organization. It may also be involved in apoptosis through binding with NDR (nuclear Dbp2-related) kinases. This antibody specially recognizes MICAL1.

Publications notables

Autrice	Pubmed ID	Journal	Application
Sharon C Hook	33087848	Sci Rep	WB
Mst Sharifa Jahan	36451778	IBRO Neurosci Rep	IHC
Ze Zhang	34750518	Oncogene	IHC

Stockage

Stockage:

Stocker à -20°C. Stable pendant un an après l'expédition.

Tampon de stockage:

PBS avec azotate de sodium à 0,02 % et glycérol à 50 % pH 7,3

L'aliquotage n'est pas nécessaire pour le stockage à -20C

*** Les 20ul contiennent 0,1% de BSA.

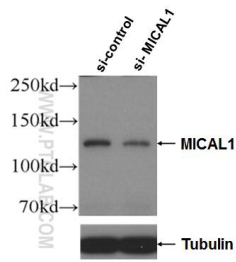
For technical support and original validation data for this product please contact:

T: 1 (888) 4PTGLAB (1-888-478-4522) (toll free in USA), or 1(312) 455-8498 (outside USA)

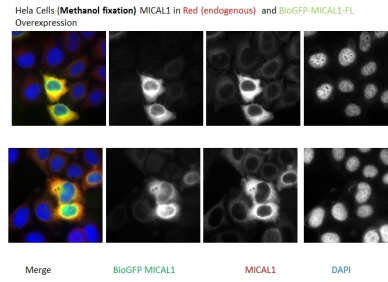
E: proteintech@ptglab.com
W: ptglab.com

This product is exclusively available under Proteintech Group brand and is not available to purchase from any other manufacturer.

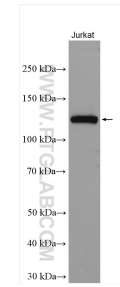
Données de validation sélectionnées



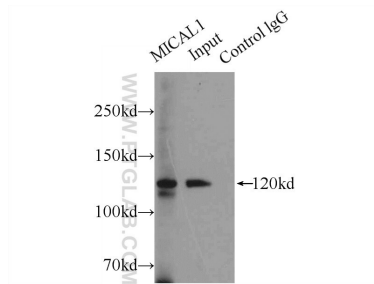
WB result of MICAL1 antibody (14818-1-AP; 1:3000; incubated at room temperature for 1.5 hours) with sh-Control and sh-MICAL1 transfected HeLa cells.



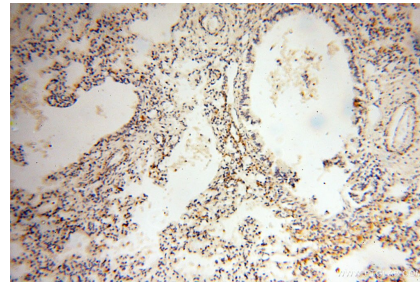
IF result of MICAL1 antibody (14818-1-AP) with HeLa Cells (Methanol fixation) MICAL1 in Red (endogenous) and BioGFP-MICAL1-FL overexpression. Courtesy of Qingyang Liu, Utrecht University.



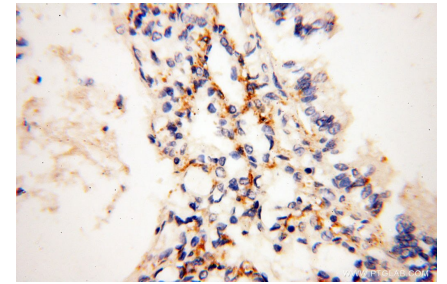
Jurkat cells were subjected to SDS PAGE followed by western blot with 14818-1-AP (MICAL1 antibody) at dilution of 1:8000 incubated at room temperature for 1.5 hours.



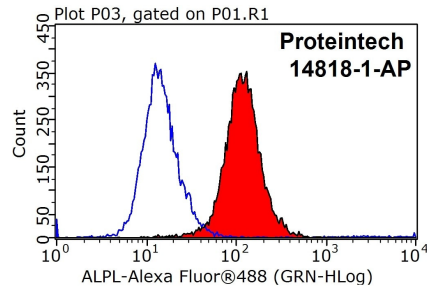
IP Result of anti-MICAL1 (IP:14818-1-AP, 5ug; Detection:14818-1-AP 1:1000) with HeLa cells lysate 2000ug.



Immunohistochemical analysis of paraffin-embedded human lung using 14818-1-AP (MICAL1 antibody) at dilution of 1:100 (under 10x lens).



Immunohistochemical analysis of paraffin-embedded human lung using 14818-1-AP (MICAL1 antibody) at dilution of 1:100 (under 40x lens).



1X10⁶ HeLa cells were stained with 0.2ug MICAL1 antibody (14818-1-AP, red) and control antibody (blue). Fixed with 90% MeOH blocked with 3% BSA (30 min). Alexa Fluor 488-conjugated AffiniPure Goat Anti-Rabbit IgG(H+L) with dilution 1:1000.