

À des fins de recherche uniquement

Anticorps Polyclonal de lapin anti-LDHB



Numéro de catalogue: 14824-1-AP

Phare

40 Publications

Informations de base

Numéro de catalogue:

14824-1-AP

Taille:

150ul, Concentration: 500 µg/ml by Nanodrop;

Hôte:

Lapin

Isotype:

IgG

Immunogen Catalog Number:

AG6605

Numéro d'acquisition GenBank:

BC002362

Identification du gène (NCBI):

3945

Nom complet:

lactate dehydrogenase B

MW calculé

36 kDa

MW observés:

35 kDa

Méthode de purification:

Purification par affinité contre l'antigène

Dilutions recommandées:

WB 1:5000-1:50000

IP 0.5-4.0 ug for IP and 1:500-1:2000 for WB

IHC 1:400-1:1500

IF 1:50-1:500

Applications

Applications testées:

FC, IF, IHC, IP, WB, ELISA

Demandes citées:

IF, IHC, WB

Spécificité de l'espèce:

Humain, rat, souris

Espèces citées:

bovin, Humain, porc, poulet, rat, souris

Contrôles positifs:

WB : cellules HeLa, cellules DU 145, tissu cardiaque de rat, tissu cardiaque de souris

IP : tissu cérébral de souris,

IHC : tissu rénal humain, tissu de cancer de la prostate humaine

IF : cellules HeLa,

Remarque-IHC: il est suggéré de démasquer l'antigène avec un tampon de TE buffer pH 9,0; (*) À défaut, 'le démasquage de l'antigène peut être effectué avec un tampon citrate pH 6,0.

Informations générales

LDHB, also named as LDH-H and NY-REN-46, belongs to the LDH/MDH superfamily. And LDH family. It is an enzyme which catalyzes the reversible conversion of pyruvate and NADH to lactate and NAD⁺ in the glycolytic pathway. LDH comprises LDHA and LDHB, two subunits that are encoded by independent genes. In muscle or liver, most of the LDH is composed of four LDHA subunits, and preferably catalyzes the reduction of pyruvate to lactate. In heart and brain, LDH is mainly composed of four LDHB subunits, and predominantly catalyzes the oxidation of lactate to pyruvate. In other tissues, LDH is composed of both LDHA and LDHB. (PMID: 26269128, 31804482)

Publications notables

Autrice	Pubmed ID	Journal	Application
Haoran Li	28990097	Mol Med Rep	
Lifang Li	36230229	Animals (Basel)	WB
Weimou Chen	34603058	Front Pharmacol	WB

Stockage

Stockage:

Stocker à -20°C. Stable pendant un an après l'expédition.

Tampon de stockage:

PBS avec azoture de sodium à 0,02 % et glycérol à 50 % pH 7,3

L'aliquotage n'est pas nécessaire pour le stockage à -20C

*** Les 20ul contiennent 0,1% de BSA.

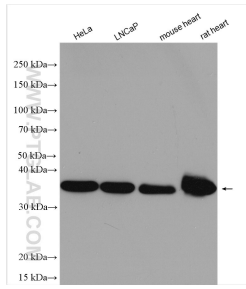
For technical support and original validation data for this product please contact:

T: 1 (888) 4PTGLAB (1-888-478-4522) (toll free in USA), or 1(312) 455-8498 (outside USA)

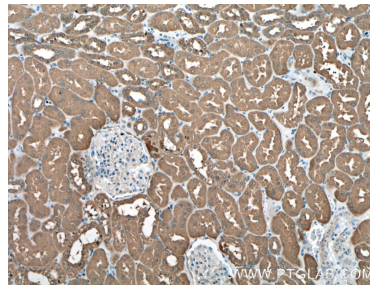
E: proteintech@ptglab.com
W: ptglab.com

This product is exclusively available under Proteintech Group brand and is not available to purchase from any other manufacturer.

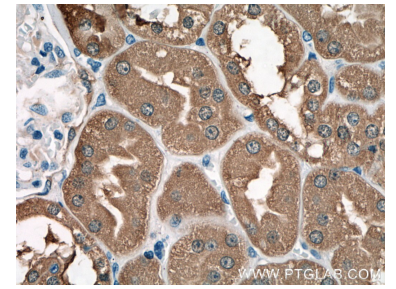
Données de validation sélectionnées



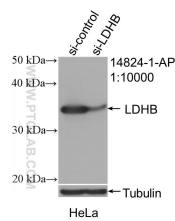
Various lysates were subjected to SDS PAGE followed by western blot with 14824-1-AP (LDHB antibody) at dilution of 1:15000 incubated at room temperature for 1.5 hours.



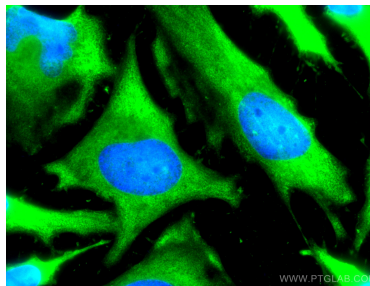
Immunohistochemical analysis of paraffin-embedded human kidney tissue slide using 14824-1-AP (LDHB antibody) at dilution of 1:400 (under 10x lens).



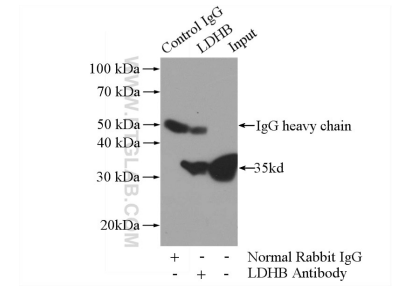
Immunohistochemical analysis of paraffin-embedded human kidney tissue slide using 14824-1-AP (LDHB antibody) at dilution of 1:400 (under 40x lens).



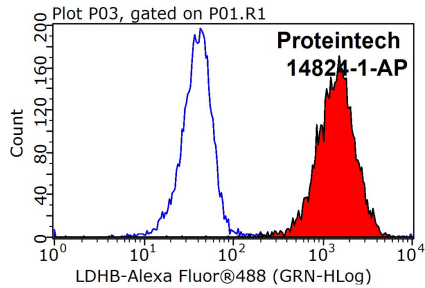
WB result of LDHB antibody (14824-1-AP; 1:10000; incubated at room temperature for 1.5 hours) with sh-Control and sh-LDHB transfected HeLa cells.



Immunofluorescent analysis of (-20°C Methanol) fixed HeLa cells using LDHB antibody (14824-1-AP) at dilution of 1:200 and Coralite®488-Conjugated AffiniPure Goat Anti-Rabbit IgG(H+L).



IP Result of anti-LDHB (IP:14824-1-AP, 3ug; Detection:14824-1-AP 1:1000) with mouse brain tissue lysate 4000ug.



1X10⁶ HeLa cells were stained with 0.2ug LDHB antibody (14824-1-AP, red) and control antibody (blue). Fixed with 90% MeOH blocked with 3% BSA (30 min). Alexa Fluor 488-conjugated AffiniPure Goat Anti-Rabbit IgG(H+L) with dilution 1:1000.