

À des fins de recherche uniquement

Anticorps Polyclonal de lapin anti-ATF2-Specific



Numéro de catalogue: 14834-1-AP

Phare

12 Publications

Informations de base

Numéro de catalogue:

14834-1-AP

Taille:

150ul, Concentration: 350 µg/ml by Nanodrop and 133 µg/ml by Bradford method using BSA as the standard;

Hôte:

Lapin

Isotype:

IgG

Numéro d'acquisition GenBank:

BC026175

Identification du gène (NCBI):

1386

Nom complet:

activating transcription factor 2

MW calculé

55 kDa

MW observés:

70 kDa

Méthode de purification:

Purification par affinité contre l'antigène

Dilutions recommandées:

WB 1:500-1:1000

IHC 1:200-1:800

Applications

Applications testées:

IHC, WB, ELISA

Demandes citées:

IF, IHC, WB

Spécificité de l'espèce:

Humain, souris

Espèces citées:

Humain, rat, souris

Contrôles positifs:

WB : cellules HeLa, cellules C2C12, cellules LNCaP

IHC : tissu de cancer du sein humain,

Remarque-IHC: il est suggéré de démasquer l'antigène avec un tampon de TE buffer pH 9,0; (*) À défaut, le démasquage de l'antigène peut être effectué avec un tampon citrate pH 6,0.

Informations générales

ATF2, also named as CREB2 and CREBP1, contains one bZIP domain and one C2H2-type zinc finger. It belongs to the bZIP family. ATF2 binds to the cAMP-responsive element(CRE), an octameric palindrome. It forms a homodimer or a heterodimer with c-Jun and stimulates CRE-dependent transcription. It is also a histone acetyltransferase (HAT) that specifically acetylates histones H2B and H4 in vitro; thus it may represent a class of sequence-specific factors that activate transcription by direct effects on chromatin components. ATF2 binds DNA as a dimer and can form a homodimer in the absence of DNA. It binds through its N-terminal region to UTF1 which acts as a coactivator of ATF2 transcriptional activity. This antibody is a rabbit polyclonal antibody raised against a peptide mapping within human ATF2. The calculated molecular weight of ATF2 is 55 kDa, but the modified ATF2 protein is about 70 kDa (PMID: 18269766).

Publications notables

Autrice	Pubmed ID	Journal	Application
Fanpeng Zhao	25342750	J Biol Chem	WB
Xiaomei Liu	30524373	Front Endocrinol (Lausanne)	WB
Joshua E Burda	35614216	Nature	IHC

Stockage

Stockage:

Stocker à -20°C. Stable pendant un an après l'expédition.

Tampon de stockage:

PBS avec azoture de sodium à 0,02 % et glycérol à 50 % pH 7,3

L'aliquotage n'est pas nécessaire pour le stockage à -20C

*** Les 20ul contiennent 0,1% de BSA.

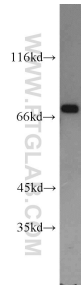
For technical support and original validation data for this product please contact:

T: 1 (888) 4PTGLAB (1-888-478-4522) (toll free in USA), or 1(312) 455-8498 (outside USA)

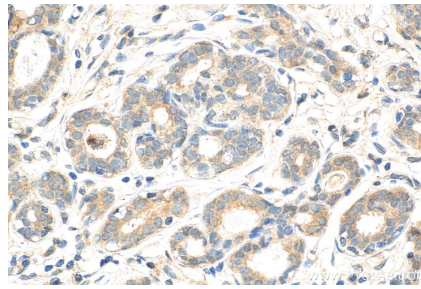
E: proteintech@ptglab.com
W: ptglab.com

This product is exclusively available under Proteintech Group brand and is not available to purchase from any other manufacturer.

Données de validation sélectionnées



HeLa cells were subjected to SDS PAGE followed by western blot with 14834-1-AP (ATF2-Specific antibody) at dilution of 1:600 incubated at room temperature for 1.5 hours.



Immunohistochemical analysis of paraffin-embedded human breast cancer tissue slide using 14834-1-AP (ATF2-Specific antibody) at dilution of 1:400 (under 40x lens). Heat mediated antigen retrieval with Tris-EDTA buffer (pH 9.0).