

À des fins de recherche uniquement

Anticorps Polyclonal de lapin anti-CXCR7-Specific



Numéro de catalogue: 14840-1-AP

Informations de base

Numéro de catalogue:
14840-1-AP

Taille:
150ul, Concentration: 170 µg/ml by
Nanodrop and 133 µg/ml by Bradford
method using BSA as the standard;

Hôte:
Lapin

Isotype:
IgG

Numéro d'acquisition GenBank:
NM_020311

Identification du gène (NCBI):
57007

Nom complet:
chemokine (C-X-C motif) receptor 7

MW calculé
41 kDa

MW observés:
50 kDa

Méthode de purification:
Purification par affinité contre
l'antigène

Dilutions recommandées:
WB 1:200-1:1000
IP 0.5-4.0 ug for IP and 1:500-1:1000
for WB
IHC 1:50-1:500

Applications

Applications testées:
IHC, IP, WB, ELISA

Spécificité de l'espèce:
Humain, rat, souris

**Remarque-IHC: il est suggéré de démasquer
l'antigène avec un tampon de TE buffer pH
9.0; (*) À défaut, 'le démasquage de
l'antigène peut être 'effectué avec un
tampon citrate pH 6,0.**

Contrôles positifs:

WB : cellules K-562, cellules C6, tissu cérébral de
souris

IP : cellules K-562,

IHC : tissu cérébral de souris,

Informations générales

CXCR7 (C-X-C chemokine receptor type 7), also known as RDC1, is a member of the G-protein coupled receptor family. CXCR7 can bind the chemokines CXCL11 and CXCL12 with high affinity, and it also acts as coreceptor with CXCR4 for a restricted number of HIV isolates. Expression of CXCR7 has been associated with cardiac development as well as with tumor progression. This antibody is specific to CXCR7.

Stockage

Stockage:

Stocker à -20°C. Stable pendant un an après l'expédition.

Tampon de stockage:

PBS avec azoture de sodium à 0,02 % et glycérol à 50 % pH 7,3

L'aliquotage n'est pas nécessaire pour le stockage à -20C

***** Les 20ul contiennent 0,1% de BSA.**

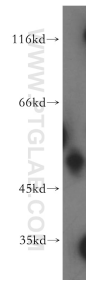
For technical support and original validation data for this product please contact:

T: 1 (888) 4PTGLAB (1-888-478-4522) (toll free
in USA), or 1(312) 455-8498 (outside USA)

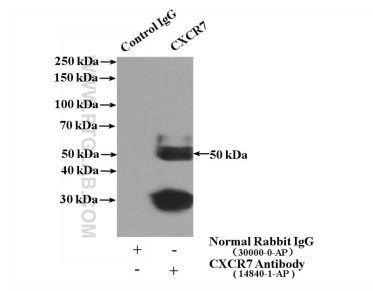
E: proteintech@ptglab.com
W: ptglab.com

**This product is exclusively available under Proteintech
Group brand and is not available to purchase from any
other manufacturer.**

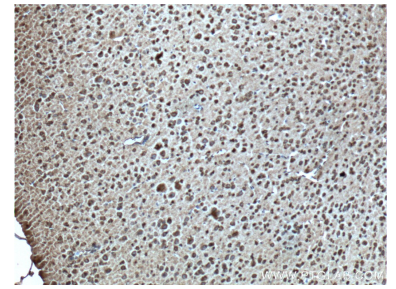
Données de validation sélectionnées



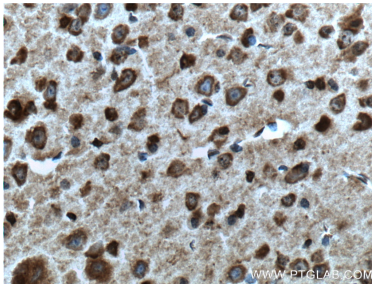
K-562 cells were subjected to SDS PAGE followed by western blot with 14840-1-AP (CXCR7-Specific antibody) at dilution of 1:100 incubated at room temperature for 1.5 hours.



IP Result of anti-CXCR7-Specific (IP:14840-1-AP, 4ug; Detection:14840-1-AP 1:500) with K-562 cells lysate 3200ug.



Immunohistochemical analysis of paraffin-embedded mouse brain tissue slide using 14840-1-AP (CXCR7-Specific Antibody) at dilution of 1:100 (under 10x lens). Heat mediated antigen retrieval with Tris-EDTA buffer (pH 9.0).



Immunohistochemical analysis of paraffin-embedded mouse brain tissue slide using 14840-1-AP (CXCR7-Specific Antibody) at dilution of 1:100 (under 40x lens). Heat mediated antigen retrieval with Tris-EDTA buffer (pH 9.0).