

À des fins de recherche uniquement

Anticorps Polyclonal de lapin anti-Connexin-26



Numéro de catalogue: 14842-1-AP

1 Publications

Informations de base

Numéro de catalogue:

14842-1-AP

Numéro d'acquisition GenBank:

NM_004004

Méthode de purification:

Purification par affinité contre l'antigène

Taille:

150ul, Concentration: 300 µg/ml by Nanodrop and 207 µg/ml by Bradford method using BSA as the standard;

Identification du gène (NCBI):

2706

Dilutions recommandées:

WB 1:500-1:2000

Hôte:

Lapin

Nom complet:

gap junction protein, beta 2, 26kDa

MW calculé

26 kDa

Isotype:

IgG

MW observés:

26 kDa

Applications

Applications testées:

WB, ELISA

Contrôles positifs:

WB : tissu cardiaque humain, tissu cérébral de souris

Demandes citées:

IF, WB

Spécificité de l'espèce:

Humain, souris

Espèces citées:

Humain

Informations générales

The gap junctions were first characterized by electron microscopy as regionally specialized structures on plasma membranes of contacting adherent cells. These structures were shown to consist of cell-to-cell channels that facilitate the transfer of ions and small molecules between cells. The gap junction proteins, also known as connexins, purified from fractions of enriched gap junctions from different tissues differ. According to sequence similarities at the nucleotide and amino acid levels, the gap junction proteins are divided into two categories, alpha and beta. Connexin-26 (GJB2) is a beta class gap junction protein. Mutations in the gene for connexin-26 are responsible for as much as 50% of pre-lingual, recessive deafness.

Publications notables

Autrice	Pubmed ID	Journal	Application
Stefania Monterisi	36107487	Elife	WB, IF

Stockage

Stockage:

Stocker à -20°C. Stable pendant un an après l'expédition.

Tampon de stockage:

PBS avec azoture de sodium à 0,02 % et glycérol à 50 % pH 7,3

L'aliquotage n'est pas nécessaire pour le stockage à -20C

*** Les 20ul contiennent 0,1% de BSA.

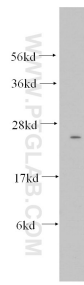
For technical support and original validation data for this product please contact:

T: 1 (888) 4PTGLAB (1-888-478-4522) (toll free in USA), or 1(312) 455-8498 (outside USA)

E: proteintech@ptglab.com
W: ptglab.com

This product is exclusively available under Proteintech Group brand and is not available to purchase from any other manufacturer.

Données de validation sélectionnées



human heart tissue were subjected to SDS PAGE followed by western blot with 14842-1-AP (Connexin-26 antibody) at dilution of 1:500 incubated at room temperature for 1.5 hours.