

À des fins de recherche uniquement

Anticorps Polyclonal de lapin anti-CUL4A-Specific



Numéro de catalogue: 14851-1-AP

Phare

22 Publications

Informations de base

Numéro de catalogue:

14851-1-AP

Taille:

150ul, Concentration: 450 µg/ml by Nanodrop and 300 µg/ml by Bradford method using BSA as the standard;

Hôte:

Lapin

Isotype:

IgG

Numéro d'acquisition GenBank:

NM_003589

Identification du gène (NCBI):

8451

Nom complet:

cullin 4A

MW calculé

88 kDa

MW observés:

77-88 kDa

Méthode de purification:

Purification par affinité contre l'antigène

Dilutions recommandées:

WB 1:2000-1:10000

IHC 1:50-1:500

Applications

Applications testées:

FC, IHC, WB, ELISA

Demandes citées:

IHC, IP, WB

Spécificité de l'espèce:

Humain, rat, souris

Espèces citées:

Humain, rat, souris

Remarque-IHC: il est suggéré de démasquer l'antigène avec un tampon de TE buffer pH 9,0; (*) À défaut, le démasquage de l'antigène peut être effectué avec un tampon citrate pH 6,0.

Contrôles positifs:

WB : cellules HL-60, cellules HeLa, cellules Jurkat

IHC : tissu rénal humain,

Informations générales

Cullin proteins assemble a large number of RING E3 ubiquitin ligases, participating in the proteolysis through the ubiquitin-proteasome pathway. Two cullin 4 (CUL4) proteins, CUL4A (87 kDa) and CUL4B(104 kDa), have been identified. The two CUL4 sequences are 83% identical. They target certain proteins for degradation by binding protein DDB1 to form a CUL4-DDB1 ubiquitin ligase complex with DDB. They form two individual E3 ligases, DDB1-CUL4ADDB2 and DDB1-CUL4BDDB2 in this process. CUL4A appeared in both the nucleus and the cytosol, suggesting a more complex mechanism for entering the nucleus. CUL4B is localized in the nucleus and facilitates the transfer of DDB1 into the nucleus independently of DDB2. This antibody is specially against CUL4A, but not CUL4B.

Publications notables

Autrice	Pubmed ID	Journal	Application
Xu Zhang	36212422	Front Oncol	WB
Yanan Wang	36433955	Nat Commun	IP
Jian Chen	25395170	Nat Commun	WB

Stockage

Stockage:

Stocker à -20°C. Stable pendant un an après l'expédition.

Tampon de stockage:

PBS avec azoture de sodium à 0,02 % et glycérol à 50 % pH 7,3

L'aliquotage n'est pas nécessaire pour le stockage à -20C

*** Les 20ul contiennent 0,1% de BSA.

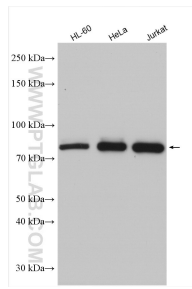
For technical support and original validation data for this product please contact:

T: 1 (888) 4PTGLAB (1-888-478-4522) (toll free in USA), or 1(312) 455-8498 (outside USA)

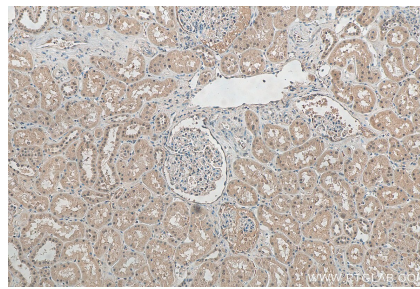
E: proteintech@ptglab.com
W: ptglab.com

This product is exclusively available under Proteintech Group brand and is not available to purchase from any other manufacturer.

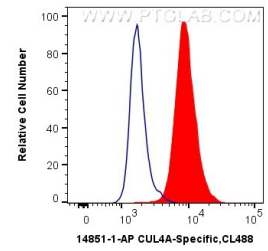
Données de validation sélectionnées



Various lysates were subjected to SDS PAGE followed by western blot with 14851-1-AP (CUL4A-Specific antibody) at dilution of 1:5000 incubated at room temperature for 1.5 hours.



Immunohistochemical analysis of paraffin-embedded human kidney tissue slide using 14851-1-AP (CUL4A-Specific antibody) at dilution of 1:200 (under 10x lens). Heat mediated antigen retrieval with Tris-EDTA buffer (pH 9.0).



1X10⁶ HepG2 cells were intracellularly stained with 0.4 ug Anti-Human CUL4A-Specific (14851-1-AP) and CoraLite®488-Conjugated AffiniPure Goat Anti-Rabbit IgG(H+L) at dilution 1:1000 (red), or 0.4 ug Control Antibody. Cells were fixed with 4% PFA and permeabilized with Flow Cytometry Perm Buffer (PF00011-C).