

À des fins de recherche uniquement

Anticorps Polyclonal de lapin anti-SYK



Numéro de catalogue: 14858-1-AP

Phare

3 Publications

Informations de base

Numéro de catalogue:
14858-1-AP

Taille:
150ul, Concentration: 800 µg/ml by Nanodrop and 433 µg/ml by Bradford method using BSA as the standard;

Hôte:
Lapin

Isotype:
IgG

Immunogen Catalog Number:
AG6657

Numéro d'acquisition GenBank:
BC001645

Identification du gène (NCBI):
6850

Nom complet:
spleen tyrosine kinase

MW calculé:
72 kDa

MW observés:
65-72 kDa

Méthode de purification:
Purification par affinité contre l'antigène

Dilutions recommandées:
WB 1:500-1:3000
IHC 1:400-1:1600

Applications

Applications testées:
IHC, WB, ELISA

Demandes citées:
IHC, WB

Spécificité de l'espèce:
Humain, rat, souris

Espèces citées:
Humain, souris

Remarque-IHC: il est suggéré de démasquer l'antigène avec un tampon de TE buffer pH 9,0; (*) À défaut, le démasquage de l'antigène peut être effectué avec un tampon citrate pH 6,0.

Contrôles positifs:

WB : cellules Daudi, cellules Raji, cellules Ramos

IHC : tissu de cancer du foie humain, tissu d'appendicite humaine, tissu ovarien humain, tissu rénal humain, tissu splénique humain

Informations générales

SYK belongs to the protein kinase superfamily, Tyr protein kinase family and SYK/ZAP-70 subfamily. It is positive effector of BCR-stimulated responses. SYK couples the B-cell antigen receptor (BCR) to the mobilization of calcium ion either through a phosphoinositide 3-kinase-dependent pathway, when not phosphorylated on tyrosines of the linker region, or through a phospholipase C-gamma-dependent pathway. It phosphorylates USP25 and regulates its intracellular levels. SYK also promotes liver fibrosis by activation of hepatic stellate cells and acts as a biomarker for human hepatocellular carcinoma. (PMID: 29537660)

Publications notables

Autrice	Pubmed ID	Journal	Application
Le Pei	36359082	Animals (Basel)	WB
Quanwei Zhou	35910221	Front Genet	IHC
Wei Xu	36727615	Food Funct	WB

Stockage

Stockage:
Stocker à -20°C. Stable pendant un an après l'expédition.

Tampon de stockage:
PBS avec azoture de sodium à 0,02 % et glycérol à 50 % pH 7,3
L'aliquotage n'est pas nécessaire pour le stockage à -20C

*** Les 20ul contiennent 0,1% de BSA.

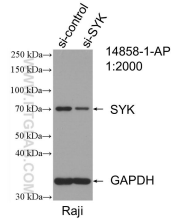
For technical support and original validation data for this product please contact:

T: 1 (888) 4PTGLAB (1-888-478-4522) (toll free in USA), or 1(312) 455-8498 (outside USA)

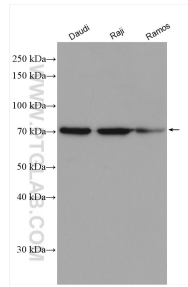
E: proteintech@ptglab.com
W: ptglab.com

This product is exclusively available under Proteintech Group brand and is not available to purchase from any other manufacturer.

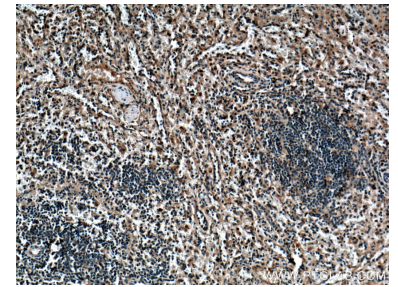
Données de validation sélectionnées



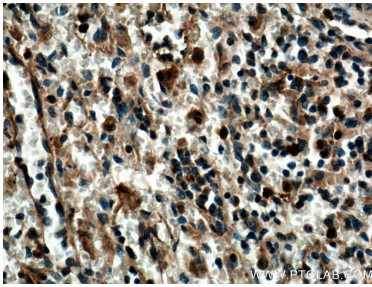
WB result of SYK antibody (14858-1-AP; 1:2000; incubated at room temperature for 1.5 hours) with sh-Control and sh-SYK transfected Raji cells.



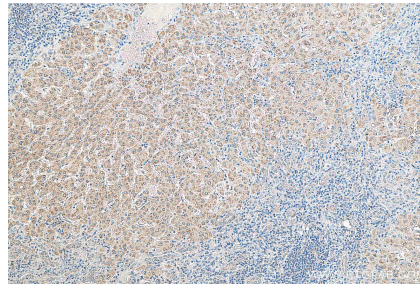
Various lysates were subjected to SDS PAGE followed by western blot with 14858-1-AP (SYK antibody) at dilution of 1:1500 incubated at room temperature for 1.5 hours.



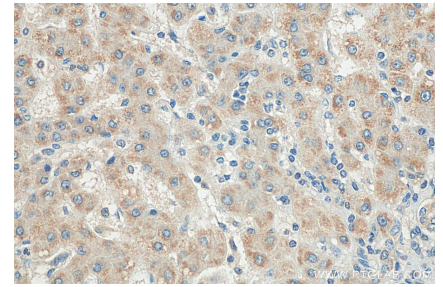
Immunohistochemical analysis of paraffin-embedded human spleen tissue slide using 14858-1-AP (SYK antibody) at dilution of 1:200 (under 10x lens). Heat mediated antigen retrieval with Tris-EDTA buffer (pH 9.0).



Immunohistochemical analysis of paraffin-embedded human spleen tissue slide using 14858-1-AP (SYK antibody) at dilution of 1:200 (under 40x lens). Heat mediated antigen retrieval with Tris-EDTA buffer (pH 9.0).



Immunohistochemical analysis of paraffin-embedded human liver cancer tissue slide using 14858-1-AP (SYK antibody) at dilution of 1:800 (under 10x lens). Heat mediated antigen retrieval with Tris-EDTA buffer (pH 9.0).



Immunohistochemical analysis of paraffin-embedded human liver cancer tissue slide using 14858-1-AP (SYK antibody) at dilution of 1:800 (under 40x lens). Heat mediated antigen retrieval with Tris-EDTA buffer (pH 9.0).