

À des fins de recherche uniquement

# Anticorps Polyclonal de lapin anti-THOC5



Numéro de catalogue: 14862-1-AP

Phare

1 Publications

## Informations de base

Numéro de catalogue:

14862-1-AP

Taille:

150ul, Concentration: 400 µg/ml by Nanodrop;

Hôte:

Lapin

Isotype:

IgG

Immunogen Catalog Number:

AG6664

Numéro d'acquisition GenBank:

BC003615

Identification du gène (NCBI):

8563

Nom complet:

THO complex 5

MW calculé

79 kDa

MW observés:

79 kDa

Méthode de purification:

Purification par affinité contre l'antigène

Dilutions recommandées:

WB 1:500-1:1000

IP 0.5-4.0 ug for IP and 1:200-1:1000 for WB

IHC 1:50-1:500

IF 1:200-1:800

## Applications

Applications testées:

FC, IF, IHC, IP, WB, ELISA

Spécificité de l'espèce:

Humain, rat, souris

Espèces citées:

souris

**Remarque-IHC: il est suggéré de démasquer l'antigène avec un tampon de TE buffer pH 9.0; (\*) À défaut, le démasquage de l'antigène peut être effectué avec un tampon citrate pH 6.0.**

Contrôles positifs:

WB : cellules HEK-293, cellules HeLa, cellules NIH/3T3

IP : cellules HEK-293,

IHC : tissu de cancer du sein humain, tissu de cancer du poumon humain

IF : cellules HepG2,

## Informations générales

THOC5, also named as C22orf19, or KIAA0983, is a 683 amino acid protein, which belongs to the THOC5 family. THOC5 is ubiquitously expressed in many tissues. THOC5 localizes in the nucleus and acts as component of the THO subcomplex of the TREX complex which is thought to couple mRNA transcription, processing and nuclear export, and which specifically associates with spliced mRNA and not with unspliced pre-mRNA. THOC5 plays a role in cytokine-stimulated monocytic development and affects granulocyte/macrophage differentiation.

## Publications notables

Autrice	Pubmed ID	Journal	Application
Wang Li L	24315442	Cell Stem Cell	

## Stockage

Stockage:

Stocker à -20°C. Stable pendant un an après l'expédition.

Tampon de stockage:

PBS avec azoture de sodium à 0,02 % et glycérol à 50 % pH 7,3

L'aliquote n'est pas nécessaire pour le stockage à -20C

\*\*\* Les 20ul contiennent 0,1% de BSA.

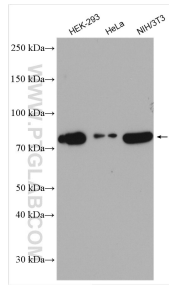
For technical support and original validation data for this product please contact:

T: 1 (888) 4PTGLAB (1-888-478-4522) (toll free in USA), or 1(312) 455-8498 (outside USA)

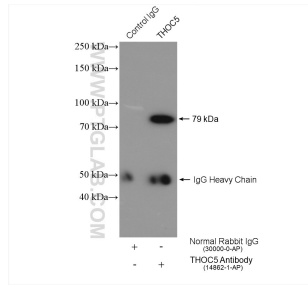
E: [proteintech@ptglab.com](mailto:proteintech@ptglab.com)  
W: [ptglab.com](http://ptglab.com)

This product is exclusively available under Proteintech Group brand and is not available to purchase from any other manufacturer.

## Données de validation sélectionnées



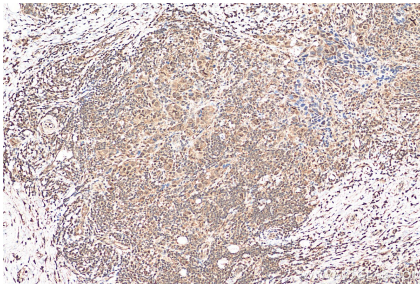
Various lysates were subjected to SDS PAGE followed by western blot with 14862-1-AP (THOC5 antibody) at dilution of 1:500 incubated at room temperature for 1.5 hours.



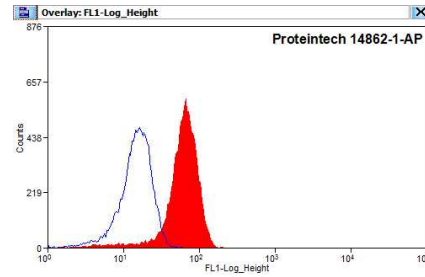
IP result of anti-THOC5(IP:14862-1-AP, 4ug; Detection:14862-1-AP 1:300) with HEK-293 cells lysate 1640 ug.



Immunofluorescent analysis of (4% PFA) fixed HepG2 cells using THOC5 antibody (14862-1-AP) at dilution of 1:400 and CoraLite@488-Conjugated AffiniPure Goat Anti-Rabbit IgG(H+L).



Immunohistochemical analysis of paraffin-embedded human breast cancer tissue slide using 14862-1-AP (THOC5 antibody) at dilution of 1:200 (under 10x lens). Heat mediated antigen retrieval with Tris-EDTA buffer (pH 9.0).



$1 \times 10^6$  HEK-293 cells were stained with 0.2ug THOC5 antibody (14862-1-AP, red) and control antibody (blue). Alexa Fluor 488-conjugated AffiniPure Goat Anti-Rabbit IgG(H+L) with dilution 1:1500. Cells were fixed with 4% PFA and permeabilized with 0.1% Triton X-100.