

À des fins de recherche uniquement

# Anticorps Polyclonal de lapin anti-SCLT1



Numéro de catalogue: 14875-1-AP

7 Publications

## Informations de base

Numéro de catalogue:

14875-1-AP

Taille:

150ul, Concentration: 260 µg/ml by Nanodrop and 180 µg/ml by Bradford method using BSA as the standard;

Hôte:

Lapin

Isotype:

IgG

Immunogen Catalog Number:

AG6646

Numéro d'acquisition GenBank:

BC064428

Identification du gène (NCBI):

132320

Nom complet:

sodium channel and clathrin linker 1

MW calculé

81 kDa

MW observés:

36 kDa, 75-80 kDa

Méthode de purification:

Purification par affinité contre l'antigène

Dilutions recommandées:

WB 1:1000-1:6000

IP 0.5-4.0 ug for IP and 1:500-1:2000 for WB

IHC 1:50-1:500

IF 1:300-1:1200

## Applications

Applications testées:

IF, IHC, IP, WB, ELISA

Demandes citées:

IF, WB

Spécificité de l'espèce:

Humain, rat, souris

Espèces citées:

Humain, souris

**Remarque-IHC: il est suggéré de démasquer l'antigène avec un tampon de TE buffer pH 9,0; (\*) A défaut, 'le démasquage de l'antigène peut être 'effectué avec un tampon citrate pH 6,0.**

Contrôles positifs:

WB : cellules HEK-293, cellules COLO 320, cellules HeLa, tissu cérébral de rat, tissu cérébral de souris

IP : tissu placentaire humain,

IHC : tissu de cancer du côlon humain,

IF : cellules hTERT-RPE1,

## Informations générales

### Publications notables

Autrice	Pubmed ID	Journal	Application
Hao Yan	32366837	Nat Commun	IF
Chuan Chen	34162535	Sci Adv	IF
Tomoharu Kanie	28625565	Dev Cell	IF

## Stockage

Stockage:

Stocker à -20°C. Stable pendant un an après l'expédition.

Tampon de stockage:

PBS avec azoture de sodium à 0,02 % et glycérol à 50 % pH 7,3

L'aliquotage n'est pas nécessaire pour le stockage à -20C

\*\*\* Les 20ul contiennent 0,1% de BSA.

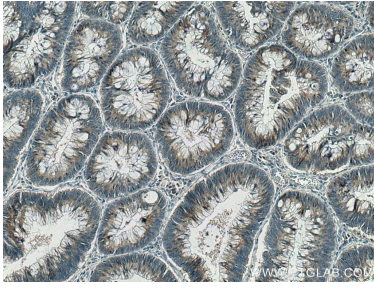
For technical support and original validation data for this product please contact:

T: 1 (888) 4PTGLAB (1-888-478-4522) (toll free in USA), or 1(312) 455-8498 (outside USA)

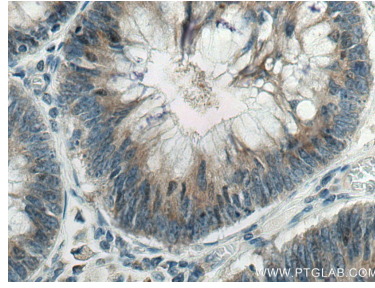
E: proteintech@ptglab.com  
W: ptglab.com

This product is exclusively available under Proteintech Group brand and is not available to purchase from any other manufacturer.

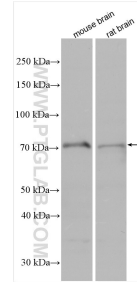
## Données de validation sélectionnées



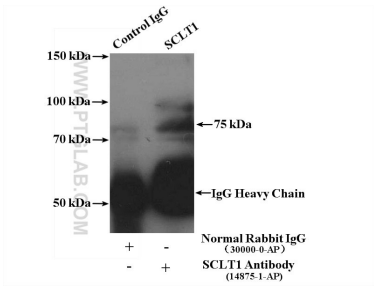
Immunohistochemical analysis of paraffin-embedded human colon cancer tissue slide using 14875-1-AP (SCLT1 antibody) at dilution of 1:200 (under 10x lens). Heat mediated antigen retrieval with Tris-EDTA buffer (pH 9.0).



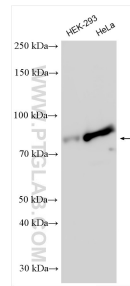
Immunohistochemical analysis of paraffin-embedded human colon cancer tissue slide using 14875-1-AP (SCLT1 antibody) at dilution of 1:200 (under 40x lens). Heat mediated antigen retrieval with Tris-EDTA buffer (pH 9.0).



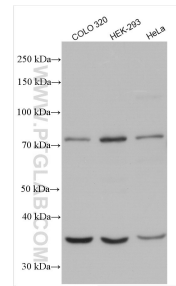
Various lysates were subjected to SDS PAGE followed by western blot with 14875-1-AP (SCLT1 antibody) at dilution of 1:1000 incubated at room temperature for 1.5 hours.



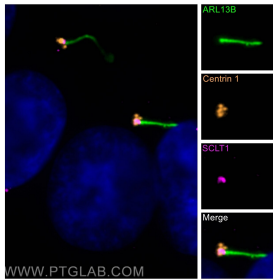
IP Result of anti-SCLT1 (IP:14875-1-AP, 4ug; Detection:14875-1-AP 1:1000) with human placenta tissue lysate 4000ug.



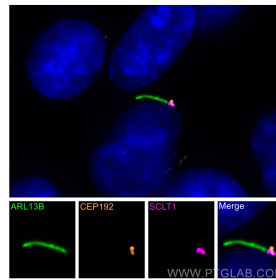
Various lysates were subjected to SDS PAGE followed by western blot with 14875-1-AP (SCLT1 antibody) at dilution of 1:3000 incubated at room temperature for 1.5 hours.



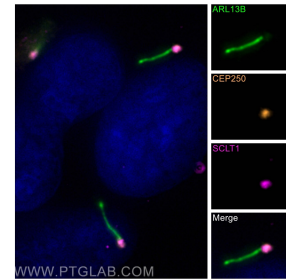
Various lysates were subjected to SDS PAGE followed by western blot with 14875-1-AP (SCLT1 antibody) at dilution of 1:1000 incubated at room temperature for 1.5 hours.



Immunofluorescent analysis of (-20°C Methanol) fixed hTERT-RPE1 cells using SCLT1 antibody (14875-1-AP) at dilution of 1:600 and CoraLite® Plus 647-conjugated AffiniPure F(ab, CoraLite® Plus 488 ARL13B antibody (CL488-17711, green), Centrin 1 antibody (12794-1-AP, orange).



Immunofluorescent analysis of (-20°C Methanol) fixed hTERT-RPE1 cells using SCLT1 antibody (14875-1-AP) at dilution of 1:600 and CoraLite® Plus 647-conjugated AffiniPure F(ab, CEP192 antibody (18832-1-AP, orange), CoraLite® Plus 488 ARL13B antibody (CL488-17711, green).



Immunofluorescent analysis of (-20°C Methanol) fixed hTERT-RPE1 cells using SCLT1 antibody (14875-1-AP) at dilution of 1:600 and CoraLite® Plus 647-conjugated AffiniPure F(ab, CoraLite® Plus 488 ARL13B antibody (CL488-17711, green), CEP250/CNAP1 antibody (14498-1-AP, orange).